

135 Waistcoat

Burda sizes 36, 38, 40, 42, 44

Back length approx. 57 cm (22 1/2 ins)

Materials

Wool twill,
width: 150 cm (59 ins)
length: 0.80 – 0.90 – 0.90 – 1.10 – 1.10 m
(7/8 – 1 – 1 – 1 1/4 – 1 1/4 yds).

Cotton satin, for the sleeves
width: 140 cm (55 ins)
length: 0.70 m (7/8 yd) for all sizes.

Lining,
width: 140 cm (55 ins)
length : 0.70 – 0.75 – 0.75 – 0.75 – 0.75 m (7/8 yd).

Interfacing.

5 buttons.

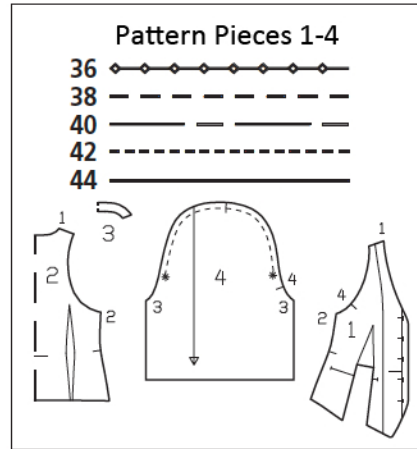
Recommended fabrics: Wool fabrics or blends.
Blouse fabric for sleeves.

Preparations

Print the pattern out on letter or A4 sized paper. It is **very important** to not scale or fit any of the pages, you must print the document in **actual size**. Your pattern will print on multiple pages, which you will then tile together. Arrange the sheets on a large, hard and flat surface matching up the numbers and letters (i.e. 6A to 6A). Cut or fold one of the sides and match the edge to it's corresponding side. Then, tape down in place so paper is secure.

Trace the pattern pieces from the pattern sheet following the lines and markings for your size. Trace the front facing from piece 1 as a separate pattern piece. The buttonholes on piece 1 are marked for size 36. For sizes 38 – 44, mark the top buttonhole the same distance from neck edge as for size 36. The bottom buttonhole is the same for all sizes. Space the other buttonholes evenly in between.

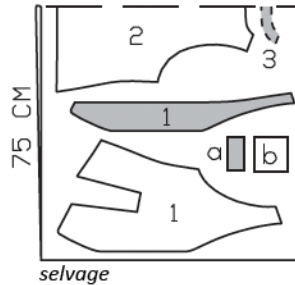
burda style magazine patterns do not have seam allowance included. To be added:
Seams and edges 1.5 cm (5/8 in), hem and sleeve hems 4 cm (1 5/8 ins), lining 1.5 cm (5/8 in).



Wool Twill, 150cm wide

Sizes 36-40

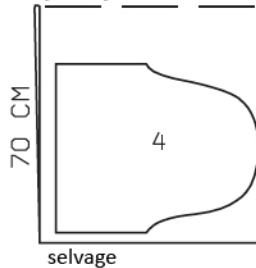
fabric fold



selvage

Cotton Satin,
140cm wide

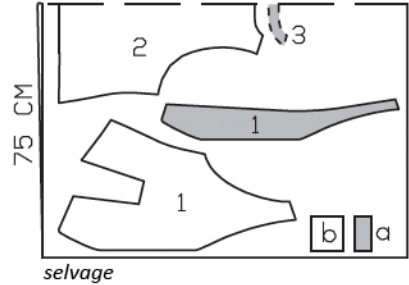
fabric fold



selvage

Sizes 42, 44

fabric fold



selvage

Cut from a double layer of fabric, right side facing in.

Cutting Out

Wool twill:

1 front 2x

front facing 2x

2 back, on a fold 1x

3 back facing, on a fold 1x

Draft the following pieces NOT included in the pattern:

a) 2 welts, 10 cm (4 ins) long, 5 cm (2 ins) wide, finished width 2.5 cm (1 in),

b) 2 pocket pieces, 13 cm (5 1/4 ins), 12 cm (4 3/4 ins) long (incl. allowances).

Cotton satin:

4 sleeve 2x

Lining: pieces 1 and 2 minus width of facing; pocket piece (piece b).

Interfacing: See shaded area on pattern layout.

Sewing

Stitch front darts. Trim dart allowances to 1 cm (3/8 in) wide and press open, pressing points of darts flat.

Sew welt pockets on fronts: Fold each welt lengthwise, with right side facing in, and stitch across ends. Trim seam allowances. Turn welts right side out and press. Stitch each welt to front, along marked attachment line, right sides facing – welt points down. Lay pocket pieces of main fabric on fronts, opposite welts and stitch in place 1.5 cm (5/8 in) from welt attachment seams. These seams should be approx. 5 mm (3/16 in) shorter at the ends than welt attachment seams. Slash between lines of stitching and clip diagonally toward each last stitch. Do not cut pocket pieces! Pull pocket pieces to inside and press welts over pocket openings. Stitch pocket lining pieces to seam allowances of welt attachment seams on inside. Fold small fabric triangles at pocket opening ends to inside and stitch to pocket pieces. Trim pocket pieces even and stitch together. Sew ends of welts in place by hand.

Stitch back darts and press toward centre back. Stitch side seams, shoulder seams and facing seams. Press seam allowances open.

Pin facing right sides together with waistcoat. Stitch along hem edge, front edges, and neck edge. Trim seam allowances. Turn facing to inside and press edges. Press hem allowance to inside and sew in place by hand.

Stitch sleeve seams. Turn sleeve hem allowances to inside, turn edges under by half width, and stitch.

Set in sleeves, gathering sleeve caps. Trim allowances of sleeve attachment seams to 7 mm (1/4 in) wide and press allowances away from sleeves.

Stitch darts and seams of lining.

Stitch lining to inside facing edge, right sides together, leaving approx. 8 cm (3 1/4 ins) open at bottom. Lay lining in waistcoat, with wrong



sides facing. Turn lining edges under and sew to sleeve attachment seams. Above hem of waistcoat, pin a fold, approx. 1 cm (3/8 in) deep, in lining. Turn lining edge under and sew to hem allowance by hand. Lay extra length of lining down and press. Sew remaining front lining edges to facing.

Work buttonholes in right front.