

136 Dress

Burda sizes 17, 18, 19, 20, 21

Length from waist 55 cm (21 3/4 ins)

7/8-sleeves approx. 50 cm (20 ins) long

Materials

White broderie anglaise/eyelet,
width:150cm (embroidered over a width of 140 cm)
length:1.15 – 1.15 – 1.20 – 1.20 – 1.20 m (1 3/8 yds).

Black wool crêpe,
width: 140 cm (55 ins)
length:1.15 – 1.15 – 1.15 – 1.20 – 1.20 m (1 3/8 yds).

Lining,
width: 140 cm (55 ins)
length: 0.60 – 0.70 – 0.75 – 0.80 – 0.85 m
(3/4 – 7/8 – 7/8 – 7/8 – 1 yd).

White bias tape, 4 cm (1 5/8 ins) wide and 0.55 m
(3/4 yd) long.

Black petersham ribbon, 6 mm (1/4 in) wide and 1.10
m (1 1/4 yds) long.

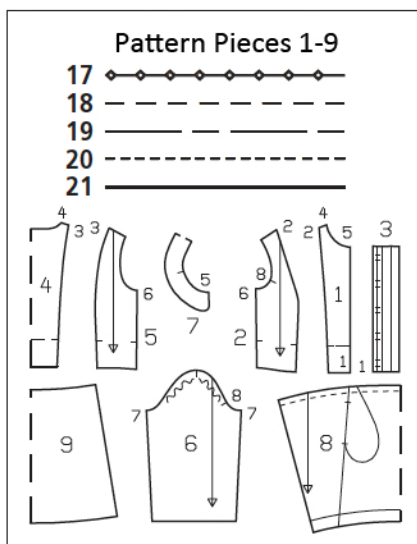
Yarn in a contrasting colour, for the decorative
stitching at hem edge.

Recommended fabrics: Embroidered cotton fabric
for the dress bodice and lightweight wool fabric for
the skirt.

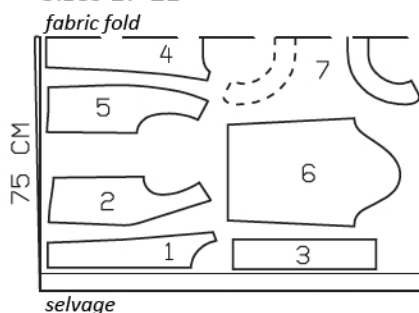
Preparations

Print the pattern out on letter or A4 sized paper.
It is **very important** to not scale or fit any of the
pages, you must print the document in
actual size. Your pattern will print on multiple
pages, which you will then tile together. Arrange
the sheets on a large, hard and flat surface
matching up the numbers and letters (i.e. 6A to
6A). Cut or fold one of the sides and match the
edge to it's corresponding side. Then, tape down
in place so paper is secure.

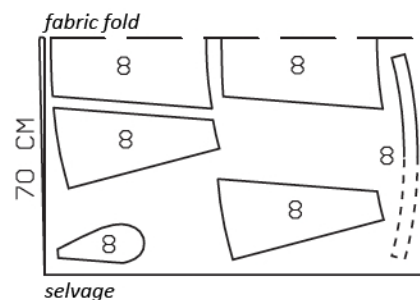
Trace the pattern pieces from the pattern sheet
following the lines and markings for your size.
Trace the hem facing from piece 8 as a separate
pattern piece. Trace the pocket piece from piece
8 as a separate pattern piece – it is the same for
all sizes. Cut piece 8 apart on the marked seam
line = centre and side skirt pieces.



White broderie, 150cm wide
Sizes 17-21

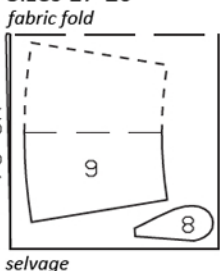


Wool Crêpe, 140cm wide
Sizes 17-21



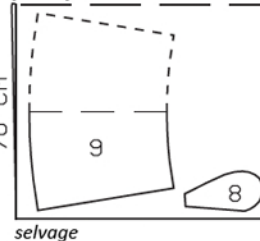
Lining, 140cm wide

Sizes 17-20



Size 21

fabric fold



Cut from a double layer
of fabric, right side
facing in.

The buttonholes on piece 3 are marked for size 17. For sizes 18 – 21,
mark the top buttonhole the same distance from upper edge as for size
17. The bottom buttonhole is the same for all sizes. Space the other but-
tonholes evenly in between.

burda style magazine patterns do not have seam allowance included.

Seam and hem allowance to be added:

Seams and edges 1.5 cm (5/8 in), lining hem 4 cm (1 5/8 ins), sleeve hems
2 cm (3/4 in). No allowances on vertical edge of integrated band facing
and upper edge of hem facing.

Cutting Out

Broderie anglaise:

- 1 centre front 2x
- 2 side front 2x
- 3 front band 2x
- 4 centre back, on a fold 1x
- 5 side back 2x
- 6 sleeve 2x
- 7 collar, on a fold 2x

Wool crêpe:

- 8 centre skirt panel, on a fold 2x
- 8 side skirt panel 4x
- 8 pocket piece 2x
- 8 hem facing, on a fold 2x

Lining:

- 8 pocket piece 2x
- 9 skirt panel, on a fold 2x

Sewing

Stitch side front pieces to centre front pieces and side back pieces to centre back piece. Trim seam allowances to 7 mm (1/4 in) wide, neaten together, and press toward centre. Stitch side seams and shoulder seams. Trim seam allowances, neaten together, and press onto back.

Stitch front bands to fronts. Press seam allowances toward bands. Fold self-facings half under and press. Turn doubled facings to outside and pin to neck edge.

Stitch collar pieces together along outer edges, from seam number 5, right sides facing. Trim seam allowances. Turn collar right side out and press. Baste attachment edges of collar together to neck edge, from seam number 5.

Fold bias tape in half lengthwise and press. Pin folded bias tape to right side of neck edge (over collar) so that fold edge of tape lies on garment piece, 1 cm (3/8 in) past seam line. Ends of bias tape lie on facings. Stitch along upper front band edges and neck edge. Trim seam allowances. Turn bias tape to inside. Turn facings to inside and baste in place. Topstitch bands close to attachment seam, catching inside edge. Topstitch neck edge 7 mm (1/4 in) from collar attachment seam, beginning and ending at band attachment seams. Work buttonholes in right



front band. Lay right front band on left front band and baste bottom edges together.

Stitch sleeve seams. Turn sleeve hem allowances to inside, turn under by half width, and stitch in place.

Set in sleeves, easing sleeve caps.

Stitch section seams on skirt, not stitching across front pocket openings.

Pin pocket pieces to seam allowances of pocket opening edges, right sides together – pocket lining pieces to centre piece, pocket pieces of main fabric to side pieces. Stitch pocket pieces in place, close to section seams and directly along seam lines on pocket opening edges. Press seams open. Lay pocket pieces on seam allowances. Cut petersham ribbon into 4 equal pieces. Pin pieces of ribbon to pocket opening edges, one after the other, so that they lie 4 mm (a generous 1/8 in) wide on skirt pieces. Turn top ends of ribbons to inside, toward pocket pieces, at an angle, and leave bottom ends loose. Edgestitch inside ribbon edges to seam allowances. Press front pocket opening edges – petersham ribbons extend. Press back pocket pieces and ribbons forward. Stitch pocket pieces together and baste to upper edge. Trim ends of petersham ribbon at angles.

Stitch side seams of hem facing. Stitch hem facing to lower skirt edge, right sides together. Trim seam allowances. Turn facing down and stitch to seam allowances, close to seam. Turn facing to inside and baste.

Gather upper edge of skirt to match lower edge of bodice. Stitch seams of skirt lining. Pin skirt to bodice, with right sides facing and pin skirt lining to bodice, with right side facing wrong side. Stitch skirt and lining to bodice together. Turn skirt and lining down. Hem lining so that it is approx. 2 cm (3/4 in) shorter than dress.

Use yarn in a contrasting colour to sew a line of running stitches 3 cm (1 1/4 ins) above lower skirt edge; stitch length approx. 5 mm (3/16 in).