

128B Skirt

Burda sizes 34, 36, 38, 40, 42, 44

Skirt length 61 cm (24 ins)

(waistband attachment = waist)

Materials

Loden Fabric,

width: 145 cm (57 ins)

length: 2.00 – 2.00 – 2.05 – 2.05 – 2.10 – 2.10 m

(2 1/4 – 2 1/4 – 2 1/4 – 2 1/4 – 2 3/8 – 2 3/8 yds).

Petersham ribbon (for waistband), 4 cm (1 5/8 ins)

wide and 1.40 – 1.50 – 1.60 – 1.60 – 1.70 – 1.80 m

(1 5/8 – 1 3/4 – 1 3/4 – 1 7/8 – 2 yds) long.

1 invisible zip, 22 cm (9 ins) long.

Recommended fabrics: Skirt fabrics of wool or blends. Use only fabrics with two identical sides.

Preparations

Follow the diagram (to the right) to make a full-sized pattern piece for the skirt panel (a) as follows:

On a large sheet of wrapping paper – the upper edge and the right edges must form a right angle – stretch a thread from the upper right corner to mark the radius (R) for the upper edge of the skirt panel. Also mark the radius (R1) for the hem line. Or measure the length of the skirt panel down from the upper edge at several points and then connect the points in an even curve to mark the hem edge.

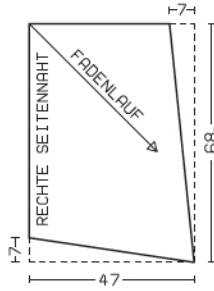
Also follow the diagram to make a full-sized pattern piece for the flounce (b).

Add seam and hem allowances:

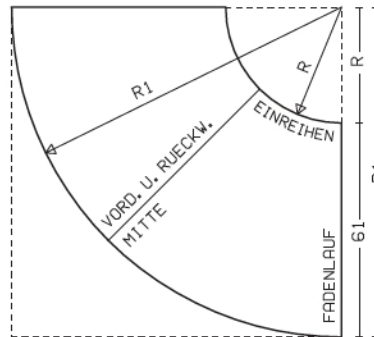
Side seams and upper skirt edge 1.5 cm (5/8 in), no allowances on all other edges.

Measurements in cm

Flounce



Skirt Panel

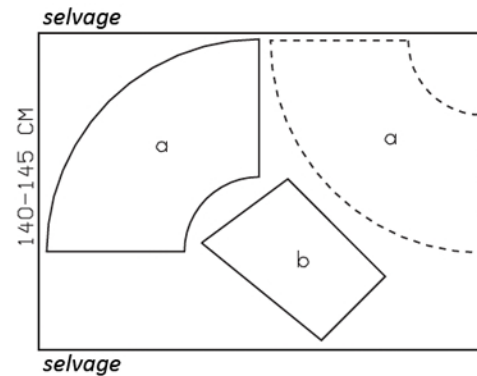


Radius for waist edge (R)

size 34: 31.8 cm, size 36: 33 cm,
size 38: 34.3 cm, size 40: 35.5 cm,
size 42: 36.8 cm, size 44: 38 cm

Radius for hem line (R1)

size 34: 92.8 cm, size 36: 94 cm,
size 38: 95.3 cm, size 40: 96.6 cm,
size 42: 97.8 cm, size 44: 99 cm



Cut from a single layer of fabric, right side facing up.

Cutting Out

- a) skirt panel 2x from the diagram,
- b) flounce 1x from the diagram.

Sewing

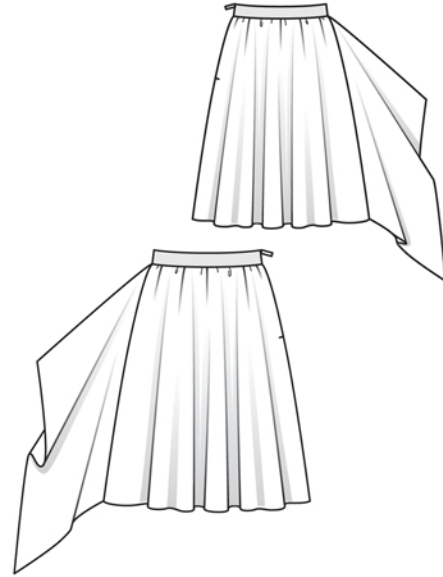
Neaten lower edges of skirt panels and outer flounce edges with zigzag stitching.

For the zip, measure and mark 16 cm (6 3/8 ins) below waist edge on left side skirt panel edges.

Lay flounce on back skirt panel, right sides facing, and baste to right side seam edge. Stitch right side seam. Press seam allowances open.

Waistband and upper skirt edge: Gather upper skirt edge to 65 – 69 – 73 – 77 – 81 – 85 cm (25 3/4 – 27 1/4 – 28 3/4 – 30 1/2 – 32 – 33 1/2 ins). For the waistband, cut two pieces of petersham ribbon, each 68 – 72 – 76 – 80 – 84 – 88 cm (26 3/4 – 28 1/2 – 30 – 31 1/2 – 33 – 34 3/4 ins) long. Lay one piece of ribbon on seam allowance on right side of upper skirt edge and pin in place. Pin other piece of petersham ribbon to inside of first ribbon, over skirt allowance. Work from outer side of skirt to topstitch close to ribbon edges.

Sew invisible zip to left slit edges of skirt and waistband, see “Helpful Hint” on next page. Leave zip tapes extending at upper waistband edge. Stitch left skirt side seam from lower edge to zip. Turn in top ends of zip tapes and sew to upper skirt edge, together with seam allowances.





These special zippers come in various lengths. The zipper should be at least 2 cm (3/4 in) longer than the slit. It is sewn in place before the seam below the slit is stitched. A special presser foot is required to sew the zipper in place.

Sewing the zipper in place:

Open the zipper and push the coil back with your thumbnail to reveal the seam marking between the tape and the coil. Place the open zipper right side down on the right fabric side of one slit edge.

In order to stitch the zipper in place exactly along the marked seam line, you must first calculate the distance between the tape edge and the fabric edge as follows: width of seam allowance minus 1 cm (3/8 in) tape width = distance from edge of fabric. This will yield a value of 5 mm (3/16 in) if the width of the seam allowance is 1.5 cm (5/8 in).

Pin the top end of the zipper tape in place, the calculated distance from the edge of the fabric. The bottom end of the zipper will extend past the marked end of the slit. Place the presser foot on the zipper so that the coil is in the notch to the right of the needle (1). Stitch zipper in place, from the top to the marked end of the slit. Close zipper.

Place the other zipper tape face down on the opposite slit edge and pin in place at the top. Open zipper again. Place the presser foot on the top end of the zipper so that the coil is in the notch to the left of the needle (2). Sew the zipper in place, from the top to the end of the slit. Close zipper.

Now stitch the seam below the zipper, from bottom to top. Turn the loose lower end of the zipper out of the way, over the seam allowance. Stitch as close as possible to the last stitches of the zipper seams. Trim away excess zipper and bind the end with a scrap of fabric.