

137 Top

Burda sizes 36, 38, 40, 42, 44

Back length approx. 78 cm (31 ins)

Sleeves approx. 7 cm (3 ins) longer than normal

Materials

Crêpe satin, with widthwise stretch,
width: 140 cm (55 ins)
length: 1.10 – 1.10 – 1.10 – 1.15 – 1.15 m
(1 1/4 – 1 1/4 – 1 1/4 – 1 3/8 – 1 3/8 yds).

Rib knit fabric,
width: 115 cm (45 ins)
length: 1.00 m (1 1/8 yds) for all sizes.

Interfacing.

Vilene Bias Tape/ stay tape.

Recommended fabrics: Softly draping fabrics, with or without elastane, combined with rib knit fabric.

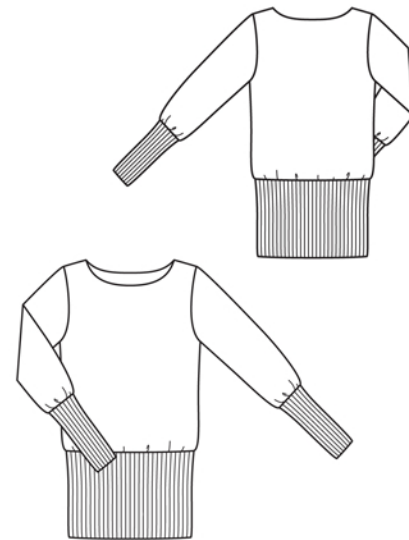
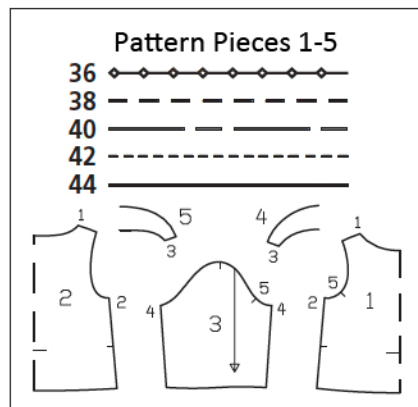
Preparations

Print the pattern out on letter or A4 sized paper. It is **very important** to not scale or fit any of the pages, you must print the document in **actual size**. Your pattern will print on multiple pages, which you will then tile together. Arrange the sheets on a large, hard and flat surface matching up the numbers and letters (i.e. 6A to 6A). Cut or fold one of the sides and match the edge to it's corresponding side. Then, tape down in place so paper is secure.

Trace the pattern pieces from the pattern sheet following the lines and markings for your size.

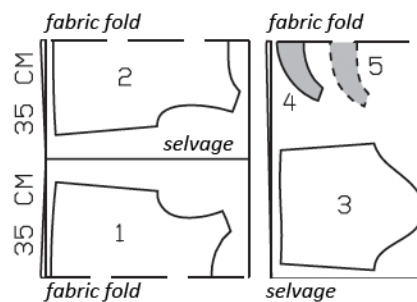
burda style magazine patterns do not have seam allowance included.

Seam and hem allowance to be added:
Seams and edges 1.5 cm (5/8 in).

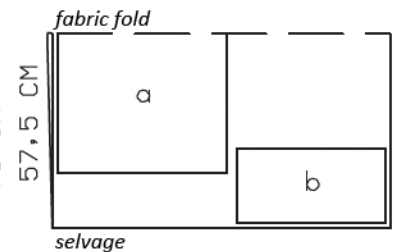


Fold the fabric as shown in the pattern layout, right side facing in.

Crêpe Satin, 140cm wide



Rib Knit, 115cm wide



Cutting Out

Crêpe satin:

- 1 front, on a fold 1x
- 2 back, on a fold 1x
- 3 sleeve 2x
- 4 front neck facing, on a fold 1x
- 5 back neck facing, on a fold 1x

Rib knit fabric:

Draft the following pieces NOT included in the pattern:

- a) hem band, 82 – 86 – 90 – 94 – 98 cm (32 1/2 – 34 – 35 1/2 – 37 – 38 3/4 ins) long, 50 cm (20 ins) wide, finished width 25 cm (10 ins),
- b) 2 sleeve bands, 22 – 23 – 24 – 24 – 25 cm (8 3/4 – 9 1/8 – 9 1/2 – 9 1/2 – 10 ins) long, 44 cm (17 1/2 ins) wide, finished width 22 cm (8 3/4 ins).

Interfacing: See shaded area on pattern layout. Iron Vilene Bias Tape/ stay tape to wrong side of front shoulder seam edges.

Sewing

Stitch side seams, shoulder seams, and facing seams. Press seams open.

Stitch neck facing to neck edge, right sides together. Trim seam allowances. Turn facing up and stitch to seam allowances, close to seam. Turn facing to inside and sew to shoulder seams.

Stitch sleeve seams. Stitch longer edges of each sleeve band piece together. Fold sleeve bands in half and stitch to lower sleeve edges, stretched to match. Press seam allowances up.

Set in sleeves.

Stitch short edges of hem band piece together. Fold hem band in half, wrong side facing in. Stitch hem band edges together to lower edge of top, stretched to match. Press seam allowances up.

