

131 Dress

Burda sizes 36, 38, 40, 42, 44

Length from waist 95 cm (37 1/2 ins)

Materials

Crêpe satin,
width: 140 cm (55 ins)
length: 2.60 – 2.75 – 2.80 – 2.85 – 2.90 m
(2 7/8 – 3 1/8 – 3 1/8 – 3 1/4 – 3 1/4 yds).

Interfacing.

Vilene Bias Tape/ stay tape.

1 invisible zip, 40 cm (16 ins) long.

Recommended fabrics: Lightweight, softly draping dress fabrics.

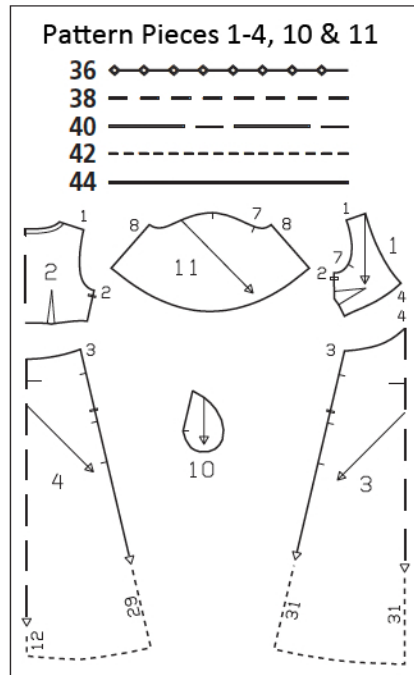
Preparations

Print the pattern out on letter or A4 sized paper. It is **very important** to not scale or fit any of the pages, you must print the document in **actual size**. Your pattern will print on multiple pages, which you will then tile together. Arrange the sheets on a large, hard and flat surface matching up the numbers and letters (i.e. 6A to 6A). Cut or fold one of the sides and match the edge to it's corresponding side. Then, tape down in place so paper is secure.

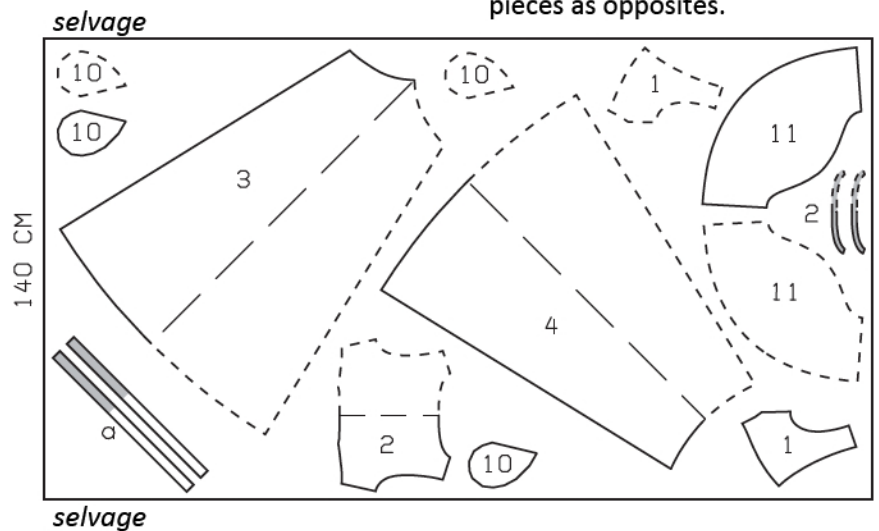
Trace the pattern pieces from the pattern sheet following the lines and markings for the correct size and the correct style (131). This pattern also includes pattern pieces, lines and markings for style 129 & 130 that should be ignored. Cut piece 2 apart on the marked seam line = back and back neck band.

burda style magazine patterns do not have seam allowance included.

Seam and hem allowance to be added:
Seams and edges 1.5 cm (5/8 in), hem 3 cm (1 1/4 ins), no allowance on lower sleeve edge.



Cut from a single layer of fabric, right side facing up. Cut right and left pieces as opposites.



Cutting Out

- 1 front 2x
- 2 back, on a fold 1x
- back neck band, on a fold 2x
- 3 front skirt panel, on a fold 1x
- 4 back skirt panel, on a fold 1x
- 10 pocket piece 4x
- 11 sleeve 2x

Draft the following piece NOT included in the pattern:

a) 2 front neck bands with integrated tie band, cut on bias, 58 – 58 – 59 – 59 – 60 cm (23 – 23 – 23 1/4 – 23 1/4 – long, 3 cm (1 1/4 ins) wide, finished width 1.5 cm (5/8 in).

Interfacing: See shaded area on pattern layout. Do not interface the 30 cm (12 in) long tie bands. Iron Vilene Bias Tape/ stay tape to wrong sides of upper skirt edges, front pocket opening edges, and zip slit edges.

Sewing

Stitch darts in fronts and back. Press bust darts down and press back darts toward centre back. Stitch right side seam of dress bodice. Stitch shoulder seams. Press seams open.

Neck band with tie bands: Lay back band pieces together, right sides facing, and stitch along marked neck edge. Trim seam allowances to 5 mm (3/16 in) wide and press seam ends open. Stitch front neck bands to back neck band (shoulder seams). Lay back band pieces together, wrong sides facing, and fold front band pieces lengthwise and press. Stitch band edges together to neck edge, leaving tie bands extending. Trim seam allowances to 7 mm (1/4 in) wide, neaten edges, and press away from neck band. On extending tie bands, trim away allowances and cut fold edges open.

Stitch right side seam of skirt, not stitching across pocket opening. Fold allowance on top point of front skirt panel down horizontally and press. Stitch skirt to dress bodice. Press seam allowances down.

Sew invisible zip to left side edges of front and back, between slit marks, see the "Helpful Hint" on next page. Leave top ends of zip tapes loose. Teeth of zip begin at slit mark. Stitch left side seam from upper edge to zip. Stitch left side seam from lower edge to zip, not stitching across pocket opening.

Inseam pockets: Pin pocket pieces to seam allowances of pocket opening edges, right sides facing. Stitch in place directly along marked seam lines. Press pocket pieces forward and stitch together.

Sew sleeve seams as French seams (double seam): First lay fabric pieces together, wrong sides facing, and stitch the 1.5 cm (5/8 in) wide seam allowances together, 7 mm (1/4 in) from the edge. Press seam allowances open. Then lay the pieces together, right sides facing, with the seam exactly along the fold. Now stitch 8 mm (a generous 1/4 in) from fold edge, along marked seam line. Press seam allowances to one side.



Set in sleeves. Leave lower sleeve edges unhemmed.

Press hem allowance to inside and sew in place by hand.



These special zippers come in various lengths. The zipper should be at least 2 cm (3/4 in) longer than the slit. It is sewn in place before the seam below the slit is stitched. A special presser foot is required to sew the zipper in place.

Sewing the zipper in place:

Open the zipper and push the coil back with your thumbnail to reveal the seam marking between the tape and the coil. Place the open zipper right side down on the right fabric side of one slit edge.

In order to stitch the zipper in place exactly along the marked seam line, you must first calculate the distance between the tape edge and the fabric edge as follows: width of seam allowance minus 1 cm (3/8 in) tape width = distance from edge of fabric. This will yield a value of 5 mm (3/16 in) if the width of the seam allowance is 1.5 cm (5/8 in).

Pin the top end of the zipper tape in place, the calculated distance from the edge of the fabric. The bottom end of the zipper will extend past the marked end of the slit. Place the presser foot on the zipper so that the coil is in the notch to the right of the needle (1). Stitch zipper in place, from the top to the marked end of the slit. Close zipper.

Place the other zipper tape face down on the opposite slit edge and pin in place at the top. Open zipper again. Place the presser foot on the top end of the zipper so that the coil is in the notch to the left of the needle (2). Sew the zipper in place, from the top to the end of the slit. Close zipper.

Now stitch the seam below the zipper, from bottom to top. Turn the loose lower end of the zipper out of the way, over the seam allowance. Stitch as close as possible to the last stitches of the zipper seams. Trim away excess zipper and bind the end with a scrap of fabric.