

177 Women's Knit Jacket

Burda sizes: 38 – 42 and 44 – 48

Figures for size 44 – 48 are given in parentheses. If only one figure is given, it applies to all sizes.

Materials

Lana Grossa "Alta Moda Cashmere" yarn (80% merino virgin wool, 20% cashmere, approx. 90 m/100 yds/ 50 g): 950 (1000) g in white, col. 11; knitting needles, size 6 mm (US 10), circular needle, size 6 mm, 80 cm (32 ins) long, and crochet hook, size 6 mm (US J/10) (all from Prym); 7 black buttons, 30 mm (1 1/4 in) Ø.

Stocking stitch: k right side (RS) rows and p wrong side (WS) rows.

Bramble stitch: Multiple of 6 sts + 2 selvage sts

1st row = RS row: purl.

2nd row = WS row: selvage st, * p5tog, [k1, k1 tbl, k1, k1 tbl, k1] in same st, rep from * cont, selvage st

3rd row: purl.

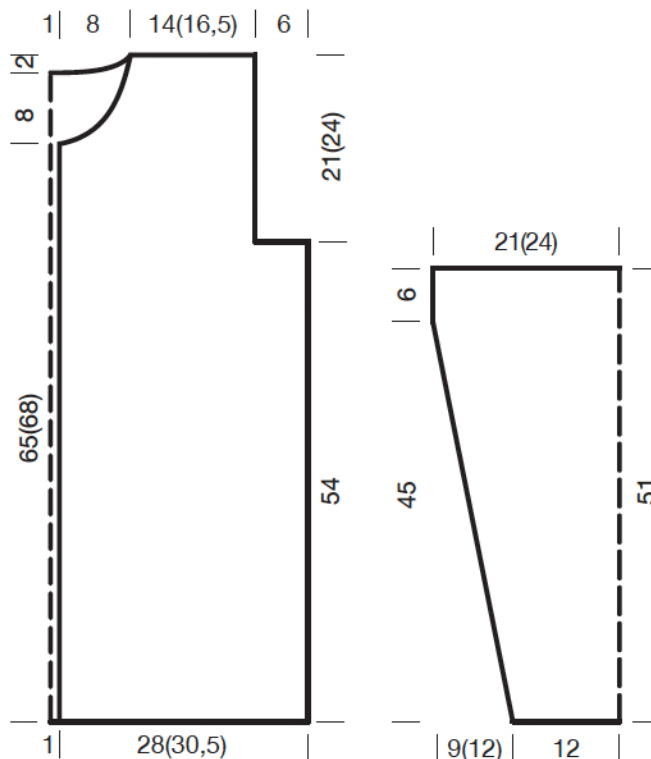
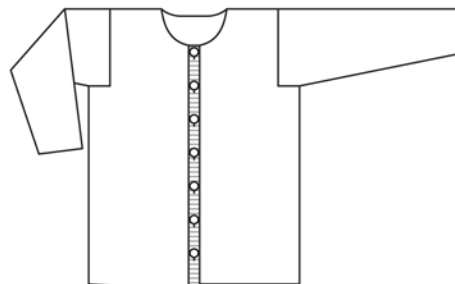
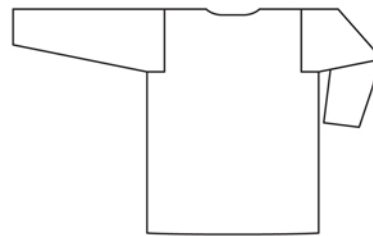
4th row: selvage st, * [k1, k1 tbl, k1, k1 tbl, k1] in same st, p5tog, rep from * cont, selvage st
Repeat rows 1 – 4 cont.

Gauge: 20 sts and 16 rows in bramble stitch = 10 x 10 cm (4 x 4 ins); 16 sts and 23 rows in stocking stitch = 10 x 10 cm (4 x 4 ins), each worked with size 6 mm needles.

Knitting abbreviations:

cont = continue/continuously, k = knit(ing), p = purl, rep = repeat(ing), st(s) = stitch(es), tbl = through back loop, tog = together, yo = yarn over

Back: With size 6 mm needles, cast on 116 (128) sts and work in bramble stitch. When work measures 54 cm (21 1/4 ins) = 86 rows from cast-on, bind off 12 sts at beginning of next 2 rows, for armholes – when doing this, for each bramble work 3 sts tog to prevent the cast-off edge from being too wide = 92 (104) sts. Then cont work straight over all sts. When work measures 19 (22) cm (7 1/2 [8 3/4] ins) = 30 (36) rows, from beginning of armholes, cast off centre 36 sts, for neck, and complete each half separately.

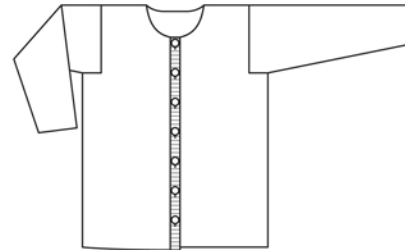
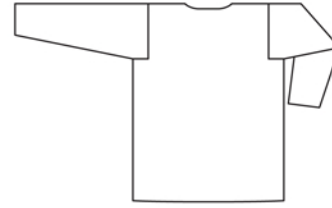


When work measures 2 cm (3/4 in) = 4 rows from beginning of neck edge, cast off the remaining 28 (34) shoulder sts. Complete the second half in the same manner.

Left front: With size 6 mm needles, cast on 56 (62) sts and work in bramble stitch. Work armhole on right edge as described for back = 44 (50) sts. Then cont work straight over all sts. When work measures 11 (14) cm (4 3/8 [5 1/2] ins) = 18 (22) rows from beginning of armhole, cast off 6 sts on left edge, to begin lower neck edge, then shape neck as follows: On left edge, in every other row, cast off 6 sts one more time and 2 sts 2 times. When work measures 10 cm (4 ins) = 16 rows from beginning of neck shaping, cast off remaining 28 (34) shoulder sts.
Right front: Work as for left front, reversing shaping.

Sleeve: With size 6 mm needles, cast on 50 sts and work in bramble stitch. Increase (inc) 1 st on each side of 3rd row from cast-on, to begin sleeve shaping, then inc 1 st on each side of every 4th row 17 (11) times and on each side of every 2nd row 0 (12) more times = 86 (98) sts. Incorporate inc sts in bramble pattern. When work measures 45 cm (17 3/4 ins) = 72 rows from cast-on, place marker on both sides then cont straight over all sts. After 6 cm (2 1/2 ins) = in the 10th row after markers = in the last WS row, work the 5 bramble sts together, and work only 2 sts in each of the following single sts. In the following RS row, cast off all sts. Make 2nd sleeve identically.

Finishing: Block all pieces, dampen, and let dry. With the circular needle, pick up 104 (108) sts along vertical edge of left front. For the doubled front band, work 6 rows of stocking stitch, then k 1 WS row, for the fold, again work 6 rows of stocking stitch, then cast off all sts loosely. Make band on right front edge in same manner, but with 2 rows of 7 equally spaced buttonholes. For the first row of 7, work the 3rd row of the band as follows: Beginning at upper edge, work 4 sts, * cast off 2 sts, work 13 sts, repeat from * 5 more times, cast off 2 sts, and work remaining 8 (12) sts. In the following row, cast on 2 sts over each buttonhole. Work 2nd row of buttonholes in the 3rd row after the fold, in the same manner. Fold each front band to inside, along



fold row, and sew in place. Sew outer buttonholes to inner buttonholes, with a few stitches. Sew upper and lower edges of each front band closed. Sew side seams and sleeve seams, as marked. Crochet 1 round of double crochet along neck edge. Set in sleeves. Sew buttons in place.