

129 Tunic

Burda sizes 36, 38, 40, 42, 44

Back length approx. 90 cm (36 ins)

3/4-sleeves, approx. 55 cm (22 ins) long

Materials

Linen lawn,
width: 110 cm (44 ins)
length: 1.70 – 1.75 – 1.80 – 1.90 – 2.00 m
(1 7/8 – 2 – 2 – 2 1/8 – 2 1/4 yds).

Dotted batiste,
width: 140 cm (55 ins)
length: 1.80 – 1.80 – 2.00 – 2.00 – 2.00 m
(2 – 2 – 2 1/4 – 2 1/4 – 2 1/4 yds).

Interfacing.

1 invisible zip, 40 cm (16 ins) long.

2 small sew-on snap fasteners.

Recommended fabrics: Lightweight cotton fabrics.

Preparations

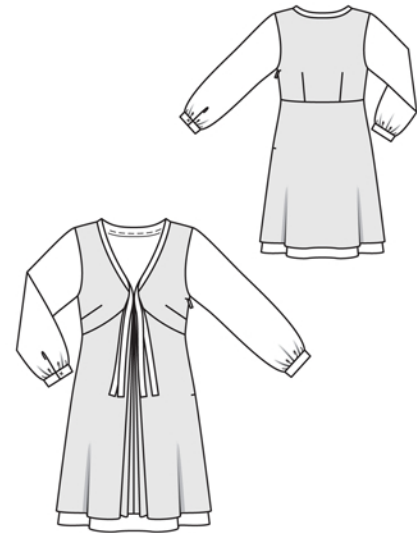
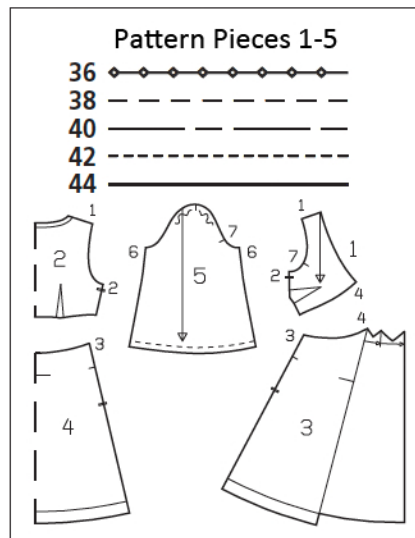
Print the pattern out on letter or A4 sized paper. It is **very important** to not scale or fit any of the pages, you must print the document in **actual size**. Your pattern will print on multiple pages, which you will then tile together. Arrange the sheets on a large, hard and flat surface matching up the numbers and letters (i.e. 6A to 6A). Cut or fold one of the sides and match the edge to it's corresponding side. Then, tape down in place so paper is secure.

Trace the pattern pieces from the pattern sheet following the lines and markings for the correct size and the correct style (129). This pattern also includes pattern pieces, lines and markings for style 130 & 131 that should be ignored.

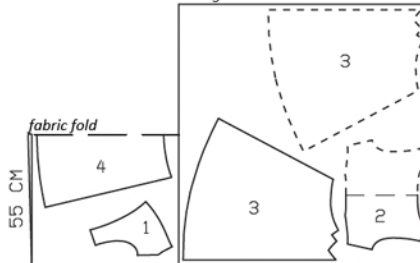
Trace pieces 3 and 4 twice each, noting different lengths for skirt panels and underskirt panels; front underskirt panel has no cut-on pleats. Cut piece 2 apart on marked seam line = back and back band.

burda style magazine patterns do not have seam allowance included. To be added:

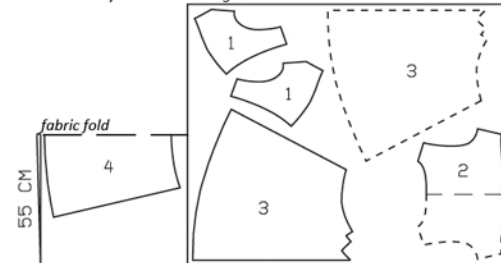
Seams, edges and hem 1.5 cm (5/8 in). No allowances on lower edges of skirt panels (linen lawn).



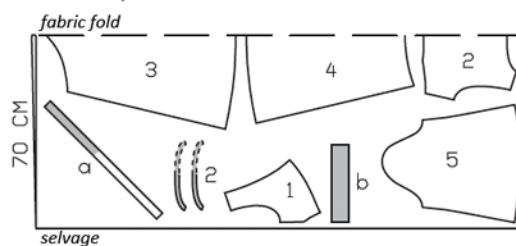
Linen Lawn, 110cm wide
Sizes 36-40



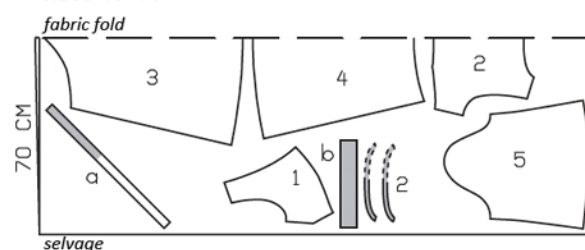
Sizes 42,44



Batiste, 140cm wide
Sizes 36, 38



Sizes 40-44



Fold the fabric as shown in the pattern layout. Right side faces in on a double layer of fabric; right side faces up on a single layer of fabric. Cut right and left pieces as opposites.

Cutting Out

Linen lawn:

- 1 front 2x
- 2 back, on a fold 1x
- 3 front skirt panel 2x
- 4 back skirt panel, on a fold 1x

Batiste:

- 1 inside front 2x
- 2 inside back, on a fold 1x
- back neck band, on a fold 2x
- 3 front lower skirt panel on a fold 1x
- 4 back lower skirt panel on a fold 1x
- 5 sleeve 2x

Draft the following pieces NOT included in the pattern:

a) 2 front neck bands with integrated tie band, cut on bias, 57 – 58 – 59 – 59 – 60 cm (22 1/2 – 23 – 23 1/4 – 23 1/4 – 23 3/4 ins) long, 4 cm (1 1/2 ins) wide, finished width 2 cm (3/4 in),

b) 2 sleeve bands, 28 – 29 – 30 – 31 – 31 cm (11 1/8 – 11 1/2 – 12 – 12 1/4 – 12 1/4 ins) long, 6 cm (2 1/2 ins) wide, finished width 3 cm (1 1/4 ins).

Interfacing: See shaded area on pattern layout. Do not interface the 30 cm (12 in) long tie bands.

Sewing

Baste front and back pieces of linen lawn to corresponding batiste pieces, with wrong side facing right side. Treat these pieces as one layer of fabric from now on. Stitch darts in bodice pieces. Press bust darts down and press back darts toward centre back. Stitch right side seam of bodice. Stitch shoulder seams. Press seam allowances open. At front point of front pieces, fold seam allowance down horizontally and press.

Neck band with tie bands: Lay back band pieces together, right sides facing, and stitch along marked neck edge. Trim seam allowances to 5 mm (3/16 in) wide and press seam ends open. Stitch front neck bands to back neck band (shoulder seams). Lay back band pieces to-



gether, wrong sides facing, and fold front band pieces lengthwise and press. Stitch band edges together to neck edge, leaving tie bands extending. Trim seam allowances to 7 mm (1/4 in) wide, neaten edges, and press away from neck band. On extending tie bands, trim away allowances and cut fold edges open.

Stitch centre seam on front skirt panels. Press seam allowances open. Lay pleats in upper skirt edge in direction of arrows and baste. Stitch right side seams on skirt and on underskirt. Lay skirt on underskirt, with wrong side facing right side. Baste upper edges together and baste side edges together, from upper edge to slit mark.

Stitch skirt to bodice – neck edges meet at centre front. Press seam allowances down.

Sew invisible zip to side edges, between slit marks, see the “Helpful Hint” on page 14. Leave top ends of zip tapes loose. Teeth of zip begin at slit mark. Stitch left side seam from upper edge to zip. Clip seam allowances of upper fabric layer at bottom of slit. Stitch left side seams from lower edge to zip separately on each layer of fabric.

Finish hem edge of underskirt: Press allowance to wrong fabric side. Work from right side to stitch along fold edge with small, closely spaced zigzag stitches. On the inside, carefully trim close to stitching.

Stitch sleeve seams. Gather lower sleeve edges to match sleeve bands. Stitch ends of each sleeve band together to form a ring. Stitch sleeve bands to lower sleeve edges. Press seam allowances of attachment seam and of other long sleeve band edge onto sleeve band. Fold sleeve bands in half to inside and baste to attachment seams. Topstitch sleeve bands close to attachment seams.

Set in sleeves, easing sleeve caps. On back half of each sleeve band, fold a pleat, 1.5 cm (5/8 in) deep, 10 cm (4 ins) from seam. Fasten pleat to sleeve band with a snap.