

### 133 Skirt

Burda sizes 34, 36, 38, 40, 42, 44

Skirt length 105 cm (41 1/2 ins)

(waistband attachment = waist)

### Materials

Linen lawn with embroidered border along one edge (pattern repeat 15 cm/ 6 ins),  
width: 140 cm (55 ins)  
length: 2.45 – 2.45 – 2.45 – 2.60 – 2.60 m  
(2 3/4 – 2 3/4 – 2 3/4 – 2 7/8 – 2 7/8 yds).

Petersham ribbon (for waistband), 2.5 cm (1 in)  
wide and 1.40 – 1.45 – 1.55 – 1.60 – 1.70 – 1.80 m  
(1 5/8 – 1 3/4 – 1 3/4 – 1 3/4 – 1 7/8 – 2 yds).

1 invisible zip, 22 cm (9 ins) long.

Recommended fabrics: Lightweight, softly draping skirt fabrics.

### Preparations

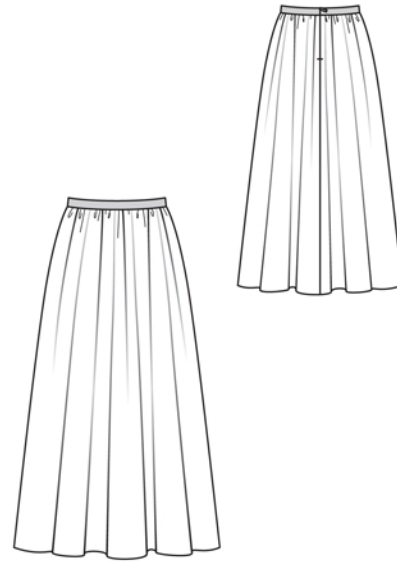
Draft the following skirt piece:

skirt piece, 240 – 240 – 240 – 255 – 255 – 255 cm  
(94 1/2 – 94 1/2 – 94 1/2 – 100 1/2 – 100 1/2 –  
100 1/2 ins) wide, 105 cm (41 1/2 ins) long.

### Cutting Out

skirt piece 2x

Lower edge of skirt panel meets edge of embroidered border. The plain fabric next to the edge of the border will be used for the hem allowance.



### Sewing

For the zip, measure and mark 17.5 cm (7 ins) below the upper edge on the still-open seam edges (centre back).

Waistband and upper skirt edge: Gather upper skirt edge to 65 – 69 – 73 – 77 – 81 – 85 cm (25 3/4 – 27 1/4 – 28 3/4 – 30 1/2 – 32 – 33 1/2 ins). For the waistband, cut two pieces of petersham ribbon, each 68 – 72 – 76 – 80 – 84 – 88 cm (26 3/4 – 28 1/2 – 30 – 31 1/2 – 33 – 34 3/4 ins) long. Lay one piece of ribbon on seam allowance on right side of upper skirt edge and pin in place. Pin other piece of petersham ribbon to inside of first ribbon, over skirt allowance. Work from outer side of skirt to topstitch close to ribbon edges.

Sew invisible zip to waistband and to back slit, see the “Helpful Hint” on next page. Leave zip tapes extending past upper waistband edge. Stitch centre back seam from lower edge to zip. Turn in upper ends of zip tapes and sew to waistband, together with seam allowances.

Press hem allowance to inside and sew in place by hand.