

176 Man's Knit Jacket

Men's sizes: 44/46, 48/50 und 52/54

Figures for sizes 48/50 and 52/54 are given in parentheses, in that order, separated by a dash. If only one figure is given, it applies to all sizes.

Materials

Lana Grossa yarns "Alta Moda Alpaca" (90% baby alpaca, 5% merino virgin wool, 5% polyamide, approx. 140 m/155 yds/50 g): 550 (600 – 650) g of grey, col. 12, and "Fumato" (42% extra-fine merino virgin wool, 18% baby alpaca, 40% polyamide, approx. 225 m/250 yds/50 g): 300 (350 – 400) g of light-and-dark-grey striped, col. 9; Prym knitting needles, sizes 6.5 mm and 7 mm (US 101/2) and circular needles, 100 cm (40 ins) long, 1 each of sizes 6.5 mm and 7 mm (US 101/2); 3 grey marled buttons from Union Knopf, art. 27090, 25 mm (1 ins) Ø, col. 76.

Attention: Always work with 2 strands of yarn (1 of each yarn)!

Rib pattern: k2, p2 alternately.

Textured pattern: Row 1 = right side (RS) row: k.

Row 2 = wrong side (WS) row: k1, p1 alternately.

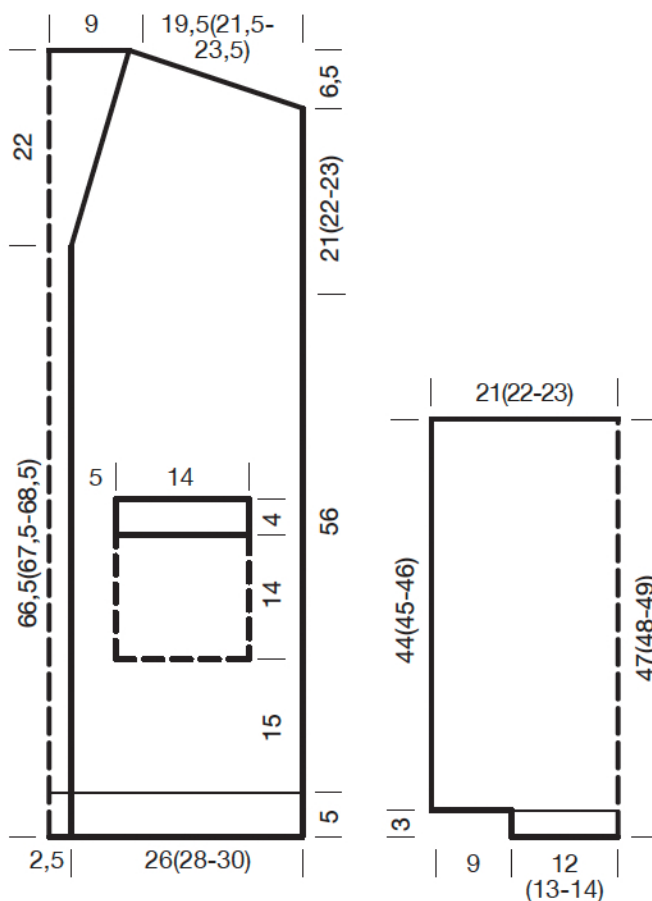
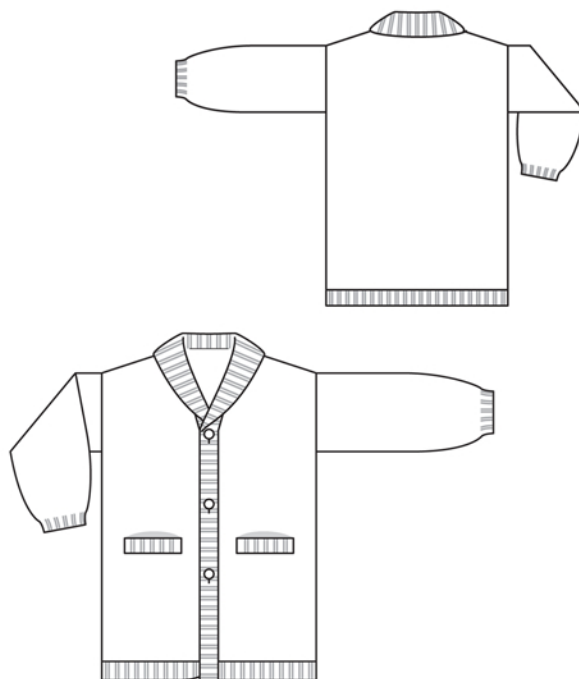
Repeat rows 1 and 2 cont.

Knitting abbreviations:

cont = continue/continuously, k = knit(ing), p = purl, rep = repeat(ing), st(s) = stitch(es), tbl = through back loop, tog = together, yo = yarn over

pattern, with 7 mm needles and 2 strands of yarn = 10 x 10 cm (4 x 4 ins).

Back: With size 6.5 mm needles and 2 strands of yarn, cast on 78 (86 – 90) sts. For hem band, work rib pattern, beginning with 1 WS row. Begin this row with selvage st, p1 and end row with p1, selvage st. When work measures 5 cm (2 ins) = 9 rows of rib pattern, in last row of hem band, decrease 7 (9 – 9) sts, evenly spaced = 71 (77 – 81) sts. Then change to size 7 mm needles and cont in textured pattern, beginning with WS row. Begin this row with selvage st, k1, p1, and end row with p1, k1, selvage st. When work mea-



asures 56 cm (22 1/4 ins) = 100 rows from hem band, place marker on both sides then cont straight over all sts. When work measures 21 (22 – 23) cm (8 1/4 [83/4 – 91/8] ins) = 40 (42 – 44) rows from markers, cast off 4 (7 – 4) sts at beginning of next 2 rows, to begin shoulder shaping, then cast off 4 (4 – 5) sts at beginning of the following 10 rows. In following row, cast off remaining 23 sts, for straight neck edge.

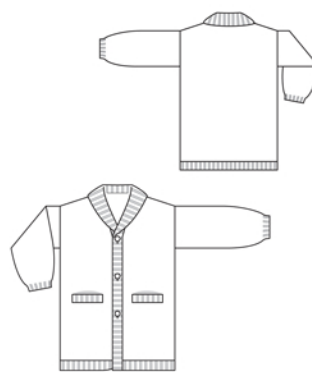
Pocket: With size 7 mm needles and 2 strands of yarn, cast on 18 sts. Work textured pattern. When work measures 14 cm (5 1/2 ins) = 26 rows from cast-on, place sts on holder.

Make 2nd pocket in same manner.

Left front: With size 6.5 mm needles and 2 strands of yarn, cast on 35 (39 – 43) sts. For hem band, work 5 cm (2 ins) = 9 rows of rib pattern, beginning with 1 WS row. Begin this row with selvage st, p2 and end with p1, selvage st. In the last row of hem band, decrease 3 (3 – 5) sts, evenly spaced = 32 (36 – 38) sts. Then change to 7 mm needles and work textured pattern. When work measures 29 cm (11 1/2 ins) = 52 rows from end of hem band, work pocket opening, as follows: on left edge place the 7th – 24th sts on a holder, and replace them with the 18 sts of the pocket. Continue working textured pattern over all sts. When work measures 56 cm (22 1/4 ins) = 100 rows from hem band, place marker on right side then cont straight over all sts. When work measures 5.5 (6.5 – 7.5) cm (2 1/4 [2 5/8 – 3] ins) = 10 (12 – 14) rows from marker, cast off 1 st on left edge, to begin neck shaping. Then on left edge, in every 4th row, cast off 1 st 7 (8 – 8) times. Work shoulder shaping on right edge as for back.

Right front: Work as for left front, reversing shaping.

Sleeve: With size 6.5 mm needles and 2 strands of yarn, cast on 30 (32 – 34) sts. For wrist band, work rib pattern, beginning with 1 WS row. Begin this row with selvage st, p 1 (2 – 1) and end row with p 1 (2 – 1), selvage st. When wrist band measures 3 cm (1 1/4 ins) = 5 rows of rib pattern, increase 23 sts in last row of wrist band, evenly spaced = 53 (55 – 57) sts – for each of these increases, pick up horizontal yarn between sts and k 1 tbl. Then change to size 7 mm needles and work textured pattern. When sleeve measures 44 (45 – 46) cm (17 1/4 [17 3/4



– 18 1/8] ins) = 80 (82 – 84) rows from wrist band, cast off all sts. Make 2nd sleeve identically.

Finishing: Block all pieces, dampen, and let dry.

At each pocket opening, use size 6.5 mm needles to pick up the 18 sts from the holder. For band on pocket opening edge, work rib pattern in rows, beginning 1st row with selvage st, k1 and ending row with k1, selvage st. When band measures 4 cm (1 5/8 ins) = 6 rows, cast off all sts as they appear. Sew narrow edges of band in place. On inside, sew pocket edges in place.

Sew shoulder seams and side seams below markers.

With size 6.5 mm circular needle and 2 strands of yarn, pick up 79 (81 – 83) sts along each vertical front edge, 31 sts from each angled front neck edge, and 24 sts from back neck edge = 244 (248 – 252) sts. For the front bands and shawl collar, work rib pattern in rows, beginning with 1 WS row. Begin this row with selvage st, p2 and end row with p2, selvage st. In the following RS row, work only up to end of back neck edge, then work shortened rows for the shawl collar. To do this, turn work with 1 yo. Work over the 24 sts of the back neck edge, then turn work with 1 yo. Cont working in rows, adding 3 sts on each side once and 2 sts on each side 16 times. Always turn with 1 yo and in the following row, work the yo together with the following st, in pattern, so that no hole is formed. Then change to size 7 mm circular needle and work over all sts. When band on vertical front edge measures 2.5 cm (1 in), work 3 buttonholes in left front edge. For each buttonhole, work 2 sts tog, then make 1 yo. Work the 1st buttonhole 31 (33 – 35) sts above the lower edge and space the remaining 2 buttonholes, each 14 sts apart. When band measures 5 cm (2 ins), cast off all sts loosely, as they appear. Set in sleeves. Sew buttons in place.