

121 Jacket

Burda sizes 36, 38, 40, 42, 44

Back length approx. 62 cm (24 1/2 ins)

Materials

Velvet cloqué with ruched fabric edge,
width: 90 cm (36 ins), cut widthwise
length: 1.90 – 2.00 – 2.05 – 2.10 – 2.15 m
(2 1/8 – 2 1/4 – 2 3/8 – 2 3/8 – 2 1/2 yds)

Petersham ribbon, 2 cm (3/4 in) wide and 2.70 –
2.75 – 2.80 – 2.90 – 2.95 m (3 – 3 1/8 – 3 1/8 – 3 1/4
– 3 3/8 yds) long.

Cord, approx. 5 mm (3/16 in) thick and 1.35 – 1.40 –
1.45 – 1.50 – 1.55 m (1 5/8 – 1 5/8 – 1 3/4 – 1 3/4 –
1 3/4 yds) long.

2 decorative ends for cords.

Recommended fabrics: Soft jacket fabrics with some
body. The ruched edge of the original fabric was
used for the hem edge of this jacket style. Alterna-
tively, you can stitch on frills of velvet backed with
organza.

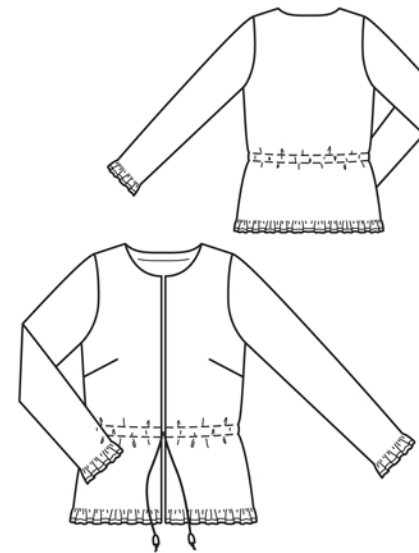
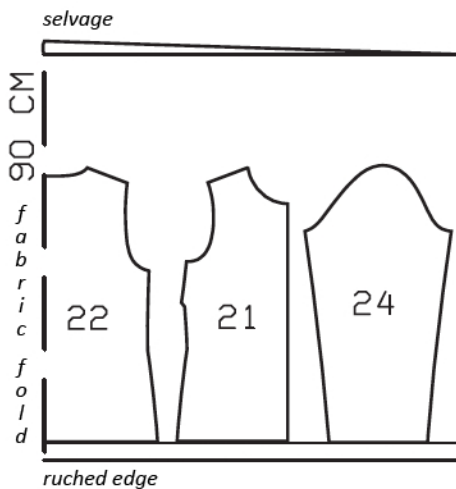
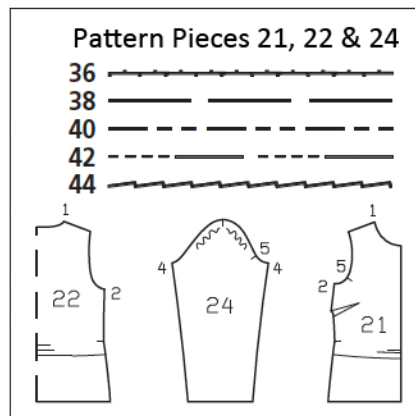
Preparations

Print the pattern out on letter or A4 sized paper.
It is **very important** to not scale or fit any of the
pages, you must print the document in
actual size. Your pattern will print on multiple
pages, which you will then tile together. Arrange
the sheets on a large, hard and flat surface
matching up the numbers and letters (i.e. 6A to
6A). Cut or fold one of the sides and match the
edge to it's corresponding side. Then, tape down
in place so paper is secure.

Trace the pattern pieces from the pattern sheet
following the lines and markings for the correct
size and the correct style (121). This pattern also
includes pattern pieces, lines and markings for
style 118, 119 & 120 that should be ignored.

**burda style magazine patterns do not have seam
allowance included.**

Seam and hem allowance to be added:
Seams and edges 1.5 cm (5/8 in), front edges and
neck edge 7 mm (1/4 in).



Fold the fabric as shown in the
pattern layout, right side facing
in.

Cutting Out

21 front 2x
22 back, on a fold 1x
24 sleeve 2x

Lay pattern pieces for front, back and sleeve on the cloqué so that
the ruched edge of the fabric extends past the lower pattern piece
edge.

Sewing

Stitch bust darts. Cut darts along centre and press open, pressing points of darts flat.

Stitch side seams and shoulder seams. Press seam allowances open.

Cut a piece of petersham ribbon to match neck edge. Pin ribbon to seam allowance of neck edge, easing in edge of ribbon slightly. It is best to first press the ribbon to shape. Edgestitch ribbon along marked neck edge. Turn seam allowance with ribbon to inside and sew inside edge in place by hand.

Cut petersham ribbon for front edges to corresponding length, including 1 cm (3/8 in) at top and bottom, to turn under. Turn bottom ends of ribbon under. Stitch ribbons to seam allowances of front edges. Turn in top ends of ribbons. Turn seam allowances with ribbons to inside and sew inside edges of ribbons in place by hand.

For the waist casing, cut 95 – 99 – 103 – 107 – 111 cm (37 1/2 – 39 – 40 3/4 – 42 1/4 – 43 3/4 ins) of petersham ribbon. Press each end to wrong side, 1 cm (3/8 in) wide. Pin ribbon to inside of jacket, to meet casing lines. Edgestitch long edges of ribbon in place. Pull cord into casing. Slide decorative ends over cord ends and knot cord ends to secure.

Stitch sleeve seams. Turn lower ends of sleeve seam allowances under, at an angle, and sew in place.

Set in sleeves, easing sleeve caps.

