

### 104 Coat

Burda sizes 36, 38, 40, 42, 44

Back length approx. 103 cm (41 ins)

### Materials

Wool velours,  
width: 150 cm (59 ins)  
length: 2.30 – 2.30 – 2.30 – 2.60 – 2.60 m  
(2 5/8 – 2 5/8 – 2 5/8 – 2 7/8 – 2 7/8 yds).

Lining,  
width: 140 cm (55 ins)  
length: 1.80 – 1.80 – 1.80 – 2.00 – 2.00 m  
(2 – 2 – 2 – 2 1/4 – 2 1/4 yds).

Piping: 1.55 – 1.60 – 1.60 – 1.65 – 1.65 m  
(1 3/4 – 1 3/4 – 1 3/4 – 1 7/8 – 1 7/8 yds).

Interfacing.

Vilene Bias Tape/ stay tape.

7 large button and 10 smaller button.

1 flat inside button and shoulder pads.

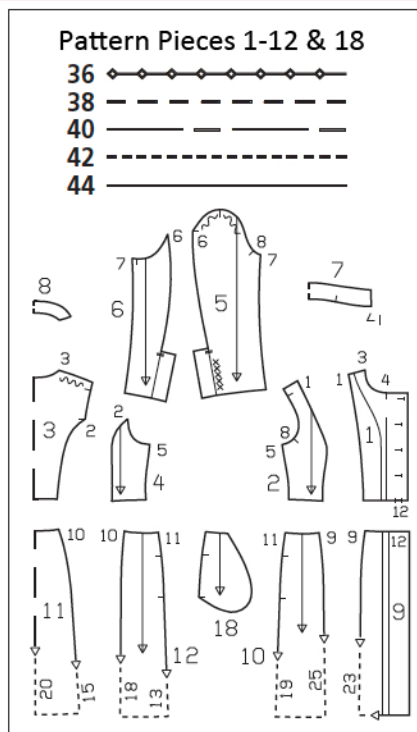
Recommended fabrics: Coat fabrics of wool or blends.

### Preparations

Print the pattern out on letter or A4 sized paper. It is **very important** to not scale or fit any of the pages, you must print the document in **actual size**. Your pattern will print on multiple pages, which you will then tile together. Arrange the sheets on a large, hard and flat surface matching up the numbers and letters (i.e. 6A to 6A). Cut or fold one of the sides and match the edge to it's corresponding side. Then, tape down in place so paper is secure.

Trace the pattern pieces from the pattern sheet following the lines and markings for the correct size and the correct style (104). This pattern also includes pattern pieces, lines and markings for style 101, 102 & 103 that should be ignored.

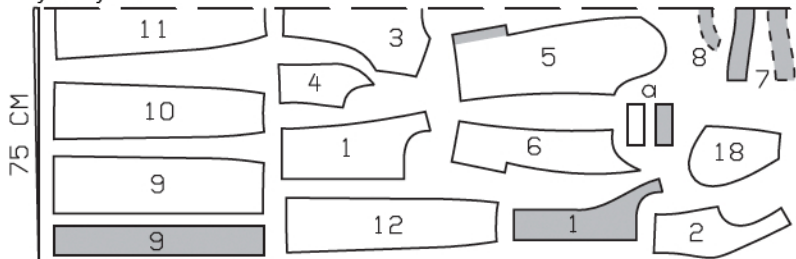
The buttonholes on piece 1 are marked for size 36. For sizes 38 – 44, mark the top buttonhole the same distance from neck edge as for size 36. The bottom buttonhole (waist seam) is the same



Cut from a double layer of fabric, right side facing in. Note direction of nap.

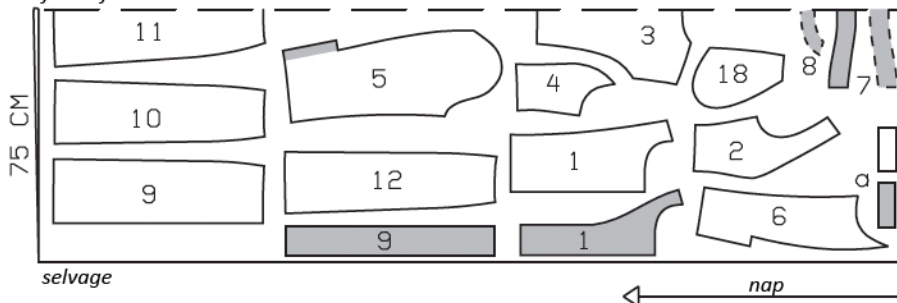
Wool Velours, 150cm wide  
Sizes 36-40

fabric fold



Sizes 42, 44

fabric fold



for all sizes. Space the other buttonholes evenly in between. The buttons on piece 5 are marked for size 36. For the other sizes, remark the buttons according to the size lines.

**burda style magazine patterns do not have seam allowance included.**

Seam and hem allowance to be added:

Seams and edges 1.5 cm (5/8 in), hem and sleeve hems 4 cm (1 5/8 ins), lining 1.5 cm (5/8 in).

## Sewing Continued...

At hem edge, unfold facings. Press hem allowance to inside, then turn down again.

Two-piece sleeve with sleeve vent: Stitch front sleeve seams (seam number 7). Press seam allowances open. On each upper sleeve, turn vent facing and hem allowance to outside and stitch corner at an angle (mitred corner). Trim allowances of mitring seam to 5 mm (3/16 in) wide and press open. On each under sleeve, stitch hem allowance to long edge of underlap, right sides together. Clip seam allowance of underlap close to last stitch. Turn hem allowances and vent facings to inside. Press edges of hem and vents. Stitch back sleeve seams up to slit marks. Clip seam allowances into corners and press open. Lay vent facing of upper sleeve on vent underlap and stitch inside edges together, from upper edges to clip. Sew sleeve hem allowances in place by hand. Sew buttons to sleeves, catching underlaps.

Set in sleeves, easing sleeve caps. Sew shoulder pads in place.

Sew lining: On back lining piece, stitch ease pleat at top and bottom, each approx. 5 cm (2 ins) long, and baste in between. Press pleat to one side. Set in sleeve linings.

Line coat, hem: Stitch lining right sides together with inside facing edge. Lay lining inside coat, with wrong sides together, pulling linings into sleeves. Turn hem allowance to inside and sew in place by hand. Turn lining edge under along hem edge, and press fold lightly. Slide upward in a shallow curve and pin to hem allowance. Sew facings and lining in place. Lay extra length of lining down and press lightly. Turn edges of sleeve linings under and sew to hem allowances. Lay extra length of lining down and press.

Work buttonholes in right front. At buttonhole in waist seam, sew edges together with small stitches by hand. On left front, work second buttonhole from bottom, for inside button.

## Cutting Out

### Wool velours:

- 1 centre upper front 2x
- front facing – upper piece 2x
- 2 side upper front 2x
- 3 centre upper back, on a fold 1x
- 4 side upper back 2x
- 5 upper sleeve 2x
- 6 under sleeve 2x
- 7 standing collar, on a fold 2x
- 8 back facing, on a fold 1x
- 9 centre lower front 2x
- front facing – lower piece 2x
- 10 side lower front 2x
- 11 centre lower back, on a fold 1x
- 12 side lower back 2x
- 18 pocket piece 2x

### Draft the following piece:

- a) 4 tab pieces (shoulder), 12 – 12 – 12.5 – 12.5 – 13 cm (4 3/4 – 4 3/4 – 5 – 5 – 5 1/4 ins) long, 5 cm (2 ins) wide.

Lining: pieces 1 and 9 minus width of facing; piece 3 minus neck facing and with an ease pleat of 2 cm (3/4 in) at centre back, pieces 5 and 6 without vent allowances; and also pieces 2, 4, 10, 11, 12, and 18.

Interfacing: See shaded area on pattern layout. Also interface hem allowances. Iron Vilene Bias Tape/ stay tape to wrong side of armhole edges.

## Sewing

Stitch section seams and side seams on upper front and back pieces. Stitch shoulder seams. Press seam allowances open.

On side lower front pieces, baste piping to front pocket opening edge so that piping cord lies on garment piece, next to seam line, and the flat tape lies on the seam allowance. Fold ends of piping tape over seam allowances at pocket opening ends.

On lower front and back pieces, stitch section seams and side seams. On side seams, do not stitch across pocket openings. Press seam allowances open.



Inseam pockets: Pin pocket pieces right sides together with seam allowances of pocket opening edges – pocket lining pieces in front and pocket pieces of main fabric in back. Stitch pocket pieces in place along marked seam lines – above pocket openings, stitch pocket pieces in place, close to seams. Press pocket pieces forward and stitch together. Baste upper pocket edges in place.

Stitch lower coat unit to upper unit, leaving buttonhole open on right front, between seam marks. Press seam allowances open.

On front facings, stitch waist seam. Leave buttonhole open on right facing, between seam marks. Stitch shoulder seams of facing. Pin facing to coat, right sides together. Stitch along front and neck edges, up to seam mark. Leave facing lying right sides together with coat for now.

Baste piping to upper edge of outer standing collar piece so that piping cord lies on garment piece. Turn beginning and end of piping over seam allowance, at an angle. Lay collar pieces right sides together and stitch together along front and upper edges, beginning and ending stitching in front, exactly at seam line of attachment edge. Trim seam allowances. Turn collar right side out and press. Lay collar between coat and facing. Stitch outer collar to neck edge of coat and stitch inside collar to facing. Press seam allowances of collar attachment seams open. Turn facing to inside and press edges. Pin attachment seams together. Work from inside to stitch seam allowances together, as far as possible.

Trim one end of each interfaced tab piece to a point. Baste piping along long edges and pointed end, clipping piping tape at corners. Lay each interfaced tab piece on tab piece with no interfacing right sides together, and stitch, leaving straight end open. Trim seam allowances, trimming corners diagonally. Turn shoulder tabs right side out and press. Work a buttonhole in pointed end of each tab. Baste tabs to armhole edges of coat, between seam marks.