

### 147A Top

Burda sizes 44, 46, 48, 50, 52

Back length approx. 83 cm (33 ins)

### Materials

Crêpe satin,  
width: 140 cm (55 ins)  
length: 2.05 – 2.10 – 2.15 – 2.30 – 2.40 m  
(2 3/8 – 2 3/8 – 2 1/2 – 2 5/8 – 2 5/8 yds).

Interfacing.

Vilene Bias Tape/ stay tape.

Recommended fabrics: Lightweight, softly draping fabrics.

### Preparations

Print the pattern out on letter or A4 sized paper. It is very important to not scale or fit any of the pages, you must print the document in actual size. Your pattern will print on multiple pages, which you will then tile together. Arrange the sheets on a large, hard and flat surface matching up the numbers and letters (i.e. 6A to 6A). Cut or fold one of the sides and match the edge to it's corresponding side. Then, tape down in place so paper is secure.

Trace the pattern pieces from the pattern sheet following the lines and markings for your size.

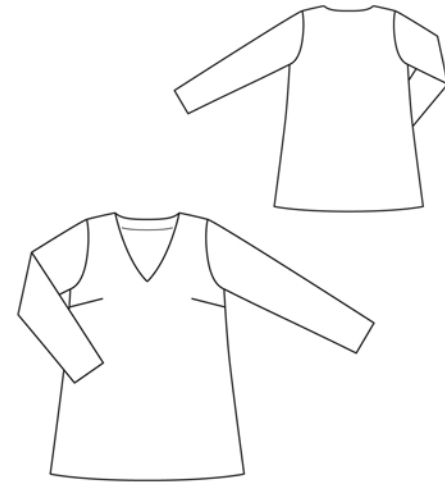
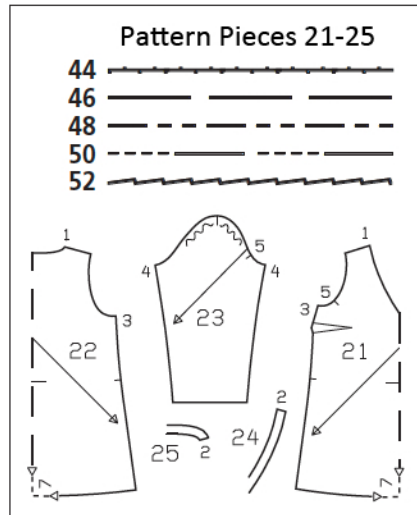
**burda style magazine patterns do not have seam allowance included.**

Seam and hem allowance to be added:  
Seams and edges 1.5 cm (5/8 in), hem and sleeve hems 4 cm (1 5/8 ins) (flare sleeve hem allowance).

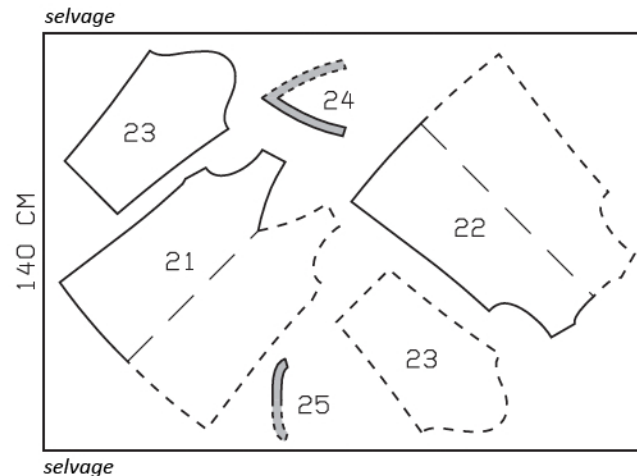
### Cutting Out

21 front, on a fold 1x  
22 back, on a fold 1x  
23 sleeve 2x  
24 front neck facing, on a fold 1x  
25 back neck facing, on a fold 1x

Interfacing: Iron to the facing pieces. Iron Vilene Bias Tape/ stay tape to wrong sides of front shoulder seam edges and armhole edges.



Cut from a single layer of fabric, right side facing up. Cut right and left sleeves as opposites.



### Sewing

Stitch bust darts and press darts down.

Stitch side seams and shoulder seams. Stitch shoulder seams of facing. Press seam allowances open.

Stitch neck facing to neck edge, right sides together. Trim seam allowances and clip allowances at centre front. Turn facing up and stitch to seam allowances, close to seam. Turn facing to inside and press edge. Sew facing to shoulder seams.

Stitch sleeve seams. Press sleeve hem allowances to inside and sew in place by hand.

Set in sleeves, easing sleeve caps.

Press hem allowance to inside and sew in place by hand.