

### 151 Dress

Burda sizes 44, 46, 48, 50, 52

Length from waist 112 cm (44 1/4 ins)

### Materials

Stretch satin,  
width: 140 cm (55 ins)  
length: 5.15 – 5.20 – 5.25 – 5.35 – 5.40 m  
(5 3/4 – 5 3/4 – 5 7/8 – 6 – 6 yds).

Interfacing.

Vilene Bias Tape/ stay tape.

1 invisible zip, 60 cm (24 ins) long.

Recommended fabrics: Softly draping dress fabrics.  
Fabrics with some elastane are ideal.

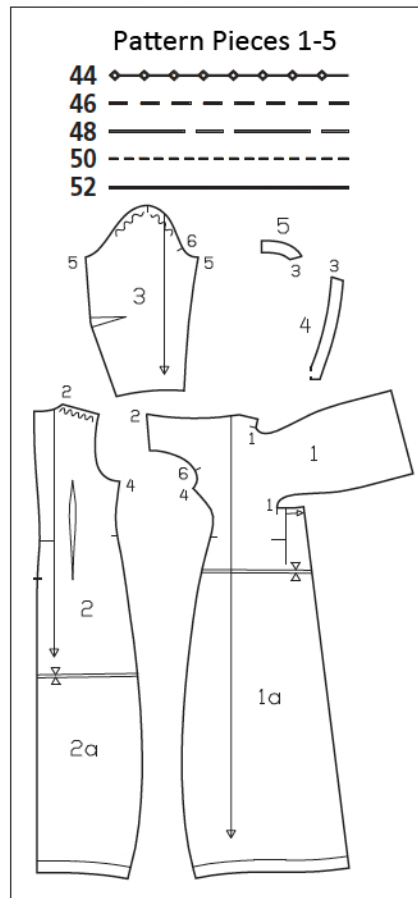
### Preparations

Print the pattern out on letter or A4 sized paper. It is very important to not scale or fit any of the pages, you must print the document in actual size. Your pattern will print on multiple pages, which you will then tile together. Arrange the sheets on a large, hard and flat surface matching up the numbers and letters (i.e. 6A to 6A). Cut or fold one of the sides and match the edge to it's corresponding side. Then, tape down in place so paper is secure.

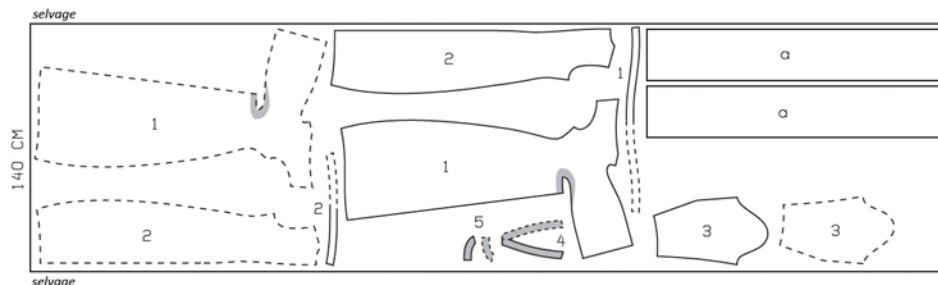
Trace the pattern pieces from the pattern sheet following the lines and markings for you size. Trace the hem facings from pieces 1 and 2 as separate pattern pieces – when cutting these pieces, place centre on a fold.

**burda style magazine patterns do not have seam allowance included.**

Seam and hem allowance to be added:  
Seams and edges 1.5 cm (5/8 in), curved seam (seam number 1) and tie band edges 7 mm (1/4 in), sleeve hems 4 cm (1 5/8 ins) (flare sleeve hem allowance).



Cut from a single layer of fabric, right side facing up. Cut right and left pieces as opposites.



### Cutting Out

- 1 front with integrated tie band 2x
- front hem facing, on a fold 1x
- 2 back 2x
- back hem facing, on a fold 1x
- 3 sleeve 2x
- 4 front neck facing, on a fold 1x
- 5 back neck facing 2x

Draft the following pieces NOT included in the pattern:

- a) 2 tie band pieces, 165 cm (65 ins) long, 27.5 – 29 – 31 – 33 – 35 cm (11 1/2 – 12 1/4 – 13 – 13 3/4 ins) wide.

Interfacing: See shaded area on pattern layout. Iron Vilene Bias Tape/ stay tape to wrong sides of front shoulder seam edges and armhole edges.

## Sewing

On front, stitch centre seams, beginning short upper seam exactly at marked point of neck edge. Press seam allowances open. Lay pleat in direction of arrow and baste to upper edge.

Stitch separate tie band pieces to integrated tie bands of fronts. Press seam allowances open. Fold tie bands lengthwise to half the width, right side facing in. Pin and stitch tie band edges together, beginning at corner (seam number 1). Clip allowances into corner at seam number 1 and clip several times along curve. Stitch horizontal edges of front together, right sides facing, matching centre seams. Turn tie bands right side out. Press allowances of horizontal seam up.

Stitch back darts and press toward centre back.

Sew invisible zip to back edges, see the “Helpful Hint” on next page. Stitch centre back seam from lower edge to zip.

Stitch shoulder seams (seam number 2). Stitch shoulder seams of facing. Press seam allowances open.

Face neck edge: Pin facing to neck edge, right sides together. At zip slit, turn facing back, approx. 5 mm (3/16 in) before opening edge, and pin to upper edge. Turn allowances on slit edges to outside and pin to neck edge, over facing. Stitch along neck edge. Clip seam allowance of facing into point of neck edge. Trim seam allowances on neck edge. Turn facing and allowances on slit edges to inside. Sew facing to zip tapes. Sew inside facing edge to seams.

Stitch side seams (seam number 4).

Stitch darts in sleeves and press darts down. Stitch sleeve seams. Press sleeve hem allowances to inside and sew in place by hand.

Set in sleeves, easing sleeve caps.



On hem facing, stitch side seams. Stitch hem facing to lower dress edge, right sides together. Turn facing to inside and press edge. Sew inside facing edge in place, loosely by hand.

Twist tie bands in front, lay toward back, and tie in a large bow.



These special zippers come in various lengths. The zipper should be at least 2 cm (3/4 in) longer than the slit. It is sewn in place before the seam below the slit is stitched. A special presser foot is required to sew the zipper in place.

### **Sewing the zipper in place:**

Open the zipper and push the coil back with your thumbnail to reveal the seam marking between the tape and the coil. Place the open zipper right side down on the right fabric side of one slit edge.

In order to stitch the zipper in place exactly along the marked seam line, you must first calculate the distance between the tape edge and the fabric edge as follows: width of seam allowance minus 1 cm (3/8 in) tape width = distance from edge of fabric. This will yield a value of 5 mm (3/16 in) if the width of the seam allowance is 1.5 cm (5/8 in).

Pin the top end of the zipper tape in place, the calculated distance from the edge of the fabric. The bottom end of the zipper will extend past the marked end of the slit. Place the presser foot on the zipper so that the coil is in the notch to the right of the needle (1). Stitch zipper in place, from the top to the marked end of the slit. Close zipper.

Place the other zipper tape face down on the opposite slit edge and pin in place at the top. Open zipper again. Place the presser foot on the top end of the zipper so that the coil is in the notch to the left of the needle (2). Sew the zipper in place, from the top to the end of the slit. Close zipper.

Now stitch the seam below the zipper, from bottom to top. Turn the loose lower end of the zipper out of the way, over the seam allowance. Stitch as close as possible to the last stitches of the zipper seams. Trim away excess zipper and bind the end with a scrap of fabric.