

### 144 Dress

**Burda sizes 44, 46, 48, 50, 52**

Length from waist 62 cm (24 1/2 ins)  
(measured at centre back)

### Materials

Wool crêpe,  
width: 140 cm (55 ins)  
length: 2.80 – 2.80 – 2.90 – 2.90 – 2.90 m  
(3 1/8 – 3 1/8 – 3 1/4 – 3 1/4 – 3 1/4 yds).

Interfacing.

Vilene Bias Tape/ stay tape.

1 invisible zip, 60 cm (24 ins) long.

Recommended fabrics: Dress fabrics of wool or blends.

### Preparations

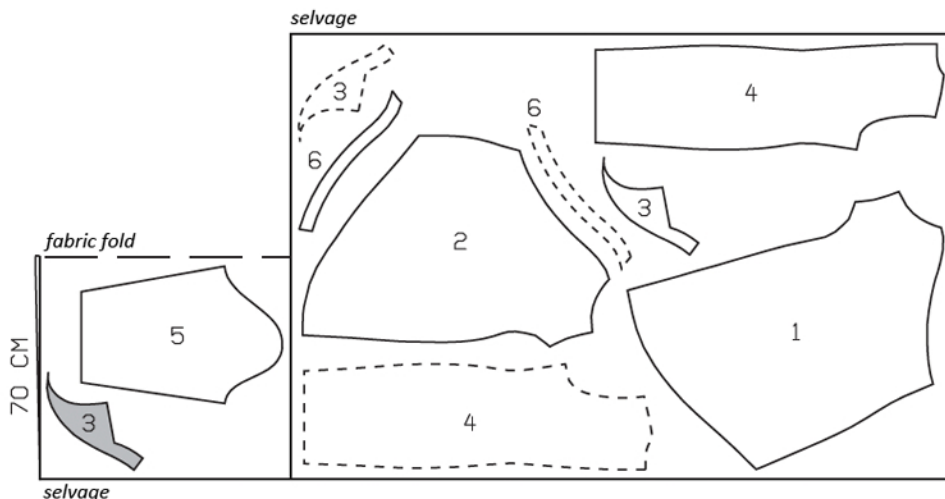
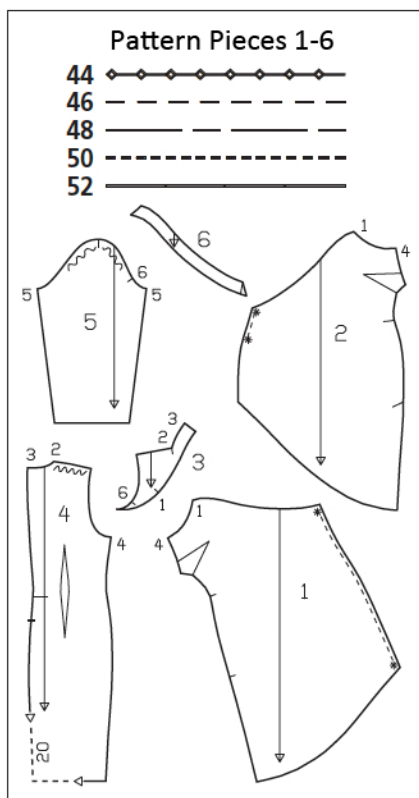
Print the pattern out on letter or A4 sized paper. It is **very** important to not scale or fit any of the pages, you must print the document in **actual size**. Your pattern will print on multiple pages, which you will then tile together. Arrange the sheets on a large, hard and flat surface matching up the numbers and letters (i.e. 6A to 6A). Cut or fold one of the sides and match the edge to it's corresponding side. Then, tape down in place so paper is secure.

Trace the pattern pieces from the pattern sheet following the lines and markings for your size.

**burda style magazine patterns do not have seam allowance included.**

Seam and hem allowance to be added:

Seams and edges 1.5 cm (5/8 in), hem 3 cm (1 1/4 ins), sleeve hems 4 cm (1 5/8 ins) (flare sleeve hem allowance).



Fold the fabric as shown in the pattern layout. Right side faces in on a double layer of fabric; right side faces up on a single layer of fabric. Lay the asymmetric front pieces on the right side of the fabric, with their printed side facing up. Cut remaining right and left pieces as opposites.

### Cutting Out

- 1 right front 1x
- 2 left front 1x
- 3 front yoke with collar 4x
- 4 back 2x
- 5 sleeve 2x
- 6 front facing 2x

Interfacing: See shaded area on pattern layout. Interface outer yoke pieces. Iron Vilene Bias Tape/ stay tape to wrong side of armhole edges, front shoulder seam edges, and zip slit edges.

## Sewing

Stitch bust darts and press darts down. Stitch back darts and press toward centre back.

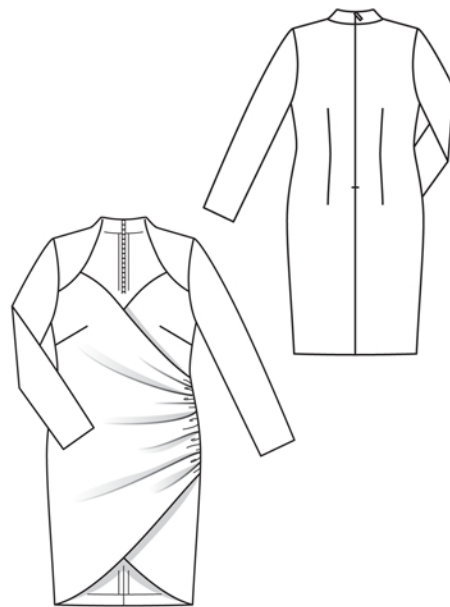
Stitch front facings to slanted neck edges of front pieces, right sides together. Turn facings up and stitch to seam allowances, close to seam. Turn facings to inside and baste narrow edges in place. Press edges.

On front pieces, press hem allowances to inside and pin in place. Gather fronts between asterisks: to 28 cm (11 1/8 ins) on right front and to 4 cm (1 5/8 ins) on left front. Lay right front on left front, with right sides of both facing up. Baste left side edges together between placement lines. Baste right edge of left front to inside right edge of right front, between seam marks.

Stitch interfaced front yoke pieces to fronts, from seam marks (seam number 1). Press seam allowances onto yokes. Stitch interfaced front yokes to back pieces, exactly from corner (shoulder seams) – seam allowances of back neck edge extend. Clip seam allowances diagonally into corners. Press seam allowances forward. Stitch collar to back neck edge, right sides facing. Press seam allowances onto collar.

Sew invisible zip to back slit edges, see the “Helpful Hint” on next page. Stitch centre back seam from lower edge to zip. Press seam allowances open.

Pin front yoke pieces with no interfacing to interfaced front yokes, right sides together, turning allowances of front yoke attachment seams down again to do so. Pin collar pieces together. Fold narrow edges of pieces without interfacing to outside, 5 mm (3/16 in) before zip, and pin to upper edge. Fold back slit allowances to outside and pin over collar pieces with no interfacing. Stitch along upper collar edges then stitch along yoke edges, up to seam mark. Trim seam allowances. Turn back slit allowances and edge of pieces with no interfacing to inside and press edges. Turn inside edges of yokes and collar under and sew in place. Baste yokes to armhole edges, not turning edges under.

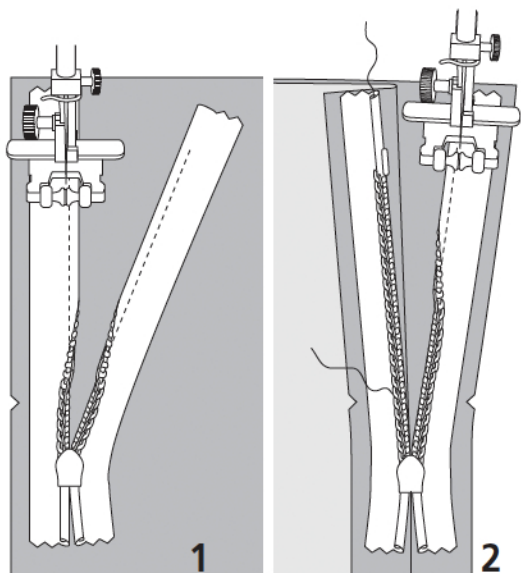


Stitch side seams, turning pressed-under hem allowances down again to do so. Press seam allowances open.

Press hem allowance to inside and sew in place by hand.

Stitch sleeve seams. Press sleeve hem allowances to inside and sew in place by hand.

Set in sleeves, easing sleeve caps.



These special zippers come in various lengths. The zipper should be at least 2 cm (3/4 in) longer than the slit. It is sewn in place before the seam below the slit is stitched. A special presser foot is required to sew the zipper in place.

### **Sewing the zipper in place:**

Open the zipper and push the coil back with your thumbnail to reveal the seam marking between the tape and the coil. Place the open zipper right side down on the right fabric side of one slit edge.

In order to stitch the zipper in place exactly along the marked seam line, you must first calculate the distance between the tape edge and the fabric edge as follows: width of seam allowance minus 1 cm (3/8 in) tape width = distance from edge of fabric. This will yield a value of 5 mm (3/16 in) if the width of the seam allowance is 1.5 cm (5/8 in).

Pin the top end of the zipper tape in place, the calculated distance from the edge of the fabric. The bottom end of the zipper will extend past the marked end of the slit. Place the presser foot on the zipper so that the coil is in the notch to the right of the needle (1). Stitch zipper in place, from the top to the marked end of the slit. Close zipper.

Place the other zipper tape face down on the opposite slit edge and pin in place at the top. Open zipper again. Place the presser foot on the top end of the zipper so that the coil is in the notch to the left of the needle (2). Sew the zipper in place, from the top to the end of the slit. Close zipper.

Now stitch the seam below the zipper, from bottom to top. Turn the loose lower end of the zipper out of the way, over the seam allowance. Stitch as close as possible to the last stitches of the zipper seams. Trim away excess zipper and bind the end with a scrap of fabric.