

115 Jacket

Burda sizes 36, 38, 40, 42, 44

Back length approx. 53 cm (21 ins)

3/4-sleeves, approx. 50 cm (20 ins) long

Materials

Wool velours,

width: 150 cm (59 ins)

length: 1.30 – 1.30 – 1.35 – 1.35 – 1.35 m

(1 1/2 – 1 1/2 – 1 5/8 – 1 5/8 – 1 5/8 yds).

Lining,

width: 140 cm (55 ins)

length: 1.00 m (1 1/8 yds) for all sizes.

Interfacing.

4 hooks and eyes.

Shoulder pads.

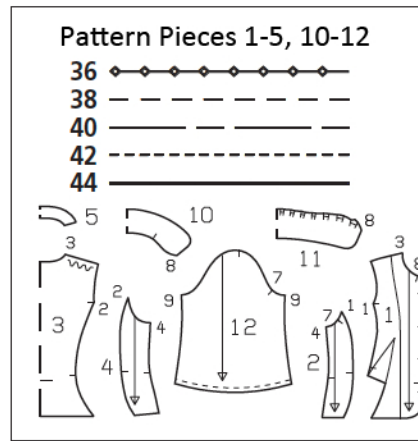
Recommended fabrics: Jacket fabrics of wool or blends.

Preparations

Print the pattern out on letter or A4 sized paper. It is **very important** to not scale or fit any of the pages, you must print the document in **actual size**. Your pattern will print on multiple pages, which you will then tile together. Arrange the sheets on a large, hard and flat surface matching up the numbers and letters (i.e. 6A to 6A). Cut or fold one of the sides and match the edge to it's corresponding side. Then, tape down in place so paper is secure.

Trace the pattern pieces from the pattern sheet following the lines and markings for the correct size and the correct style (115). This pattern also includes pattern pieces, lines and markings for style 114, 116 & 117 that should be ignored.

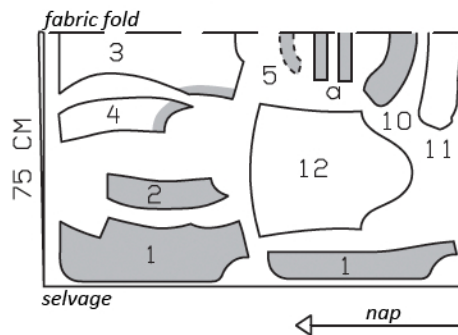
Trace the facing from piece 1 as a separate pattern piece. The markings for the hooks and eyes on piece 1 are for size 36. For sizes 38 – 44, mark the top marking the same distance from neck edge as for size 36. The bottom marking is the same for all sizes. Space the remaining markings evenly in between.



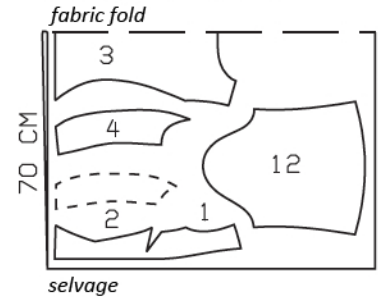
Cut from a double layer of fabric, right side facing in. Note direction of nap on velours.



Wool Velours, 150cm wide



Lining, 140cm wide



Cutting Out

Wool velours:

- 1 centre front 2x
- front facing 2x
- 2 side front 2x
- 3 centre back, on a fold 1x
- 4 side back 2x
- 5 back facing, on a fold 1x
- 10 under collar, on a fold 1x
- 11 top collar, on a fold 1x
- 12 sleeve 2x

Draft the following piece:

- a) 2 sleeve bands, 28 – 29 – 30 – 31 – 31 cm long, 4 cm (1 1/2 ins) wide, finished width 2 cm (3/4 in).

Lining: piece 1 minus width of facing; piece 3 minus neck facing and with an ease pleat of approx. 2 cm (3/4 in) at centre back;; and also pieces 2, 4, and 12.

Interfacing: See shaded area on pattern layout. Also interface hem allowances of back pieces.

Centre front lining piece: Mark a horizontal line from the section seam to point of dart and cut open. Lay vertical dart closed, thereby opening a bust dart for the lining piece (see pattern layout).

burda style magazine patterns do not have seam allowance included.

Seam and hem allowance to be added:

Seams and edges 1.5 cm (5/8 in), hem 4 cm (1 5/8 ins), lining 1.5 cm (5/8 in).

Sewing

Stitch darts in fronts. Trim dart allowances to 1 cm (3/8 in) wide and press open, pressing points of darts flat.

Stitch front and back section seams. Clip seam allowances several times along curves. Press seam allowances open. Stitch side seams, shoulder seams, and facing seams.

Pin facing to jacket, right sides together. Stitch along hem edge, front edges and neck edge, up to seam mark at seam number 8. At hem edge, end stitching 3 cm (1 1/4 ins) from facing edges. On front edges, leave 7 mm (1/4 in) open at each seam mark, for hooks and eyes. Leave facing lying right sides together with jacket for now.

On top collar, lay pleats in direction of arrow, as marked, and baste. Stitch top collar and under collar together along outer edges, right sides facing, beginning and ending stitching in front, exactly at seam line of attachment edge. Turn collar right side out. Lay collar between jacket and facing. Stitch under collar to neck edge of jacket and stitch top collar to facing. Press seams open. Turn facing to inside. Pin collar attachment seams together exactly. Turn back facing up again and stitch allowances together, close to collar attachment seam. Turn facing down again.

On right front edge, slide hooks through seam openings, from inside to outside. Slide eyes through openings in left front edge. Sew ends of hooks and eyes to facings.

Press hem allowance to inside and sew in place by hand.

Stitch sleeve seams. Set in sleeves. Sew shoulder pads in place.

Sew lining: On back lining piece, stitch ease pleat at top and bottom, each approx. 5 cm (2 ins) long, and baste in between. Press pleat to one side. Stitch darts and seams of lining. Set in sleeve linings.



Sew lining to jacket: Stitch lining to inside facing edge, first turning lower facing edges down. Lay lining inside jacket, with wrong sides facing, pulling linings into sleeves. Turn lining under along hem edge and press fold lightly. Slide upward in a shallow curve and pin to hem allowance. Sew facings and lining in place. Lay extra length of lining down and press lightly. Above each sleeve hem, pin a fold, approx. 1 cm (3/8 in) deep, in lining. Turn edge of sleeve lining under and sew to hem allowance. Lay extra length down and press. Gather lower edges of sleeves and linings together to match edges of sleeve bands. Stitch narrow edges of each sleeve band together to form a ring, right side facing in. Stitch sleeve bands to sleeve edges. Press seam allowances onto sleeve bands. Fold sleeve bands half to inside, turn raw edges under, and sew to attachment seams.