

### 118A Top

Burda sizes 36, 38, 40, 42, 44

Back length approx. 57 cm (22 1/2 ins)

### Materials

Fine knit fabric,  
width: 120 cm (47 ins)  
length: 0.70 – 0.70 – 0.70 – 0.70 – 1.40 m  
(7/8 – 7/8 – 7/8 – 7/8 – 1 5/8 yds).

Piece of Interfacing.

Vilene Bias Tape/ stay tape.

Bias tape, 4 cm (1 5/8 ins) wide and 1.45 – 1.50 –  
1.55 – 1.60 – 1.60 m (13 3/4 yds) long.

1 small button.

A twin sewing machine needle.

Recommended fabrics: Fine knit fabrics or softly  
draping sequin fabrics.

### Preparations

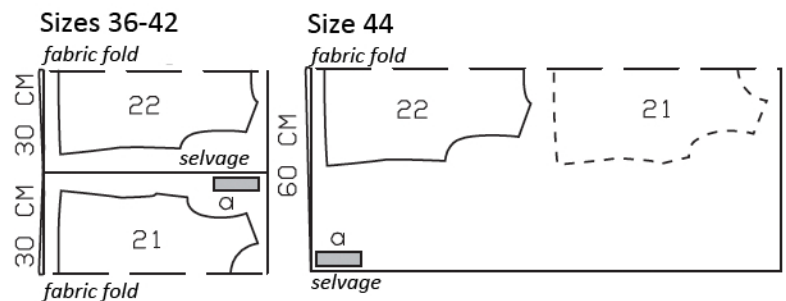
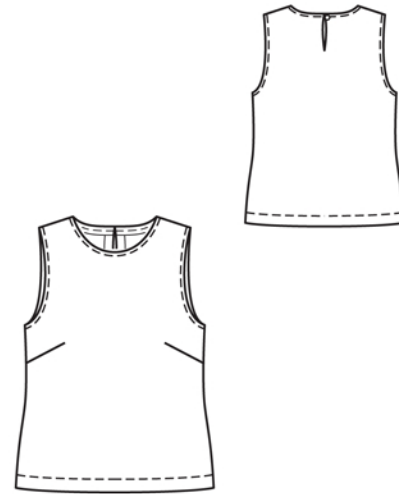
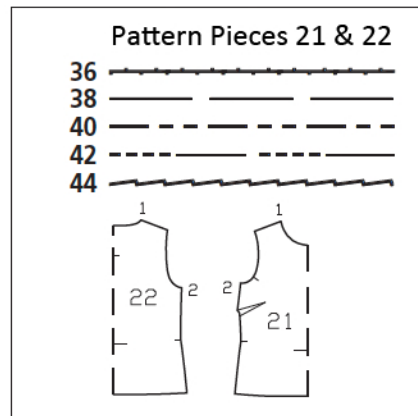
Print the pattern out on letter or A4 sized paper.  
It is **very** important to not scale or fit any of the  
pages, you must print the document in  
**actual size**. Your pattern will print on multiple  
pages, which you will then tile together. Arrange  
the sheets on a large, hard and flat surface  
matching up the numbers and letters (i.e. 6A to  
6A). Cut or fold one of the sides and match the  
edge to it's corresponding side. Then, tape down  
in place so paper is secure.

Trace the pattern pieces from the pattern sheet  
following the lines and markings for the correct  
size and the correct style (118A). This pattern  
also includes pattern pieces, lines and markings  
for style 119, 120 & 121 that should be ignored.

**burda style magazine patterns do not have seam  
allowance included.**

Seam and hem allowance to be added:

Seams and edges 1.5 cm (5/8 in), hem 4 cm (1  
5/8 ins).



Fold the fabric as shown in the pattern layout, right side facing in.

### Cutting Out

21 front, on a fold 1x  
22 back, on a fold 1x

Draft the following piece NOT included in the pattern:  
a) back slit facing, 13 – 14 – 14 – 15 – 15 cm (5 1/4 – 5 1/2 – 5 1/2  
– 6 – 6 ins) long, 4 cm (1 5/8 ins) wide (incl. allowances).

Interfacing: See shaded area on pattern layout. Iron Vilene Bias  
Tape/ stay tape to wrong side of neck and armhole edges and  
also front shoulder seam edges.

### Sewing

Stitch bust darts. Press darts up.

**Back slit:** At centre back, mark slit with basting stitches. Pin back slit facing piece to back, over slit mark, right sides together. Work from wrong side to stitch closely around marked slit. Slash between lines of stitching. Turn facing to inside. Press slit edges. Sew inside facing edges in place by hand.

Stitch shoulder seams. Neaten seam allowances together and press onto back.

**Neck edge:** Fold bias strip lengthwise and press. Pin folded bias strip to neck edge so that fold edge of strip lies on garment piece, 1 cm (3/8 in) past seam line. Stitch along marked neck edge. Trim seam allowances. Turn strip to inside, turn in ends, and sew in place. Topstitch 7 mm (1/4) from neck edge.

Face armholes with bias strips as described for neck edge. Do not turn ends of strips under.

Stitch side seams. Sew upper ends of seam allowances in place.

Press hem allowance to inside. Stitch hem from right side, 2.5 cm (1 in) from lower edge, using the twin machine needle.

Fasten back slit with a button and thread loop.

