

### 119 Blouse

Burda sizes 36, 38, 40, 42, 44

Back length approx. 62 cm (24 1/2 ins)

### Materials

Crêpe satin,  
width: 140 cm (55 ins)  
length: 1.40 – 1.40 – 1.40 – 1.45 – 1.45 m  
(1 5/8 – 1 5/8 – 1 5/8 – 1 3/4 – 1 3/4 yds).

Interfacing.

Vilene Bias Tape/ stay tape.

3 small buttons.

Recommended fabrics: Lightweight, softly draping fabrics

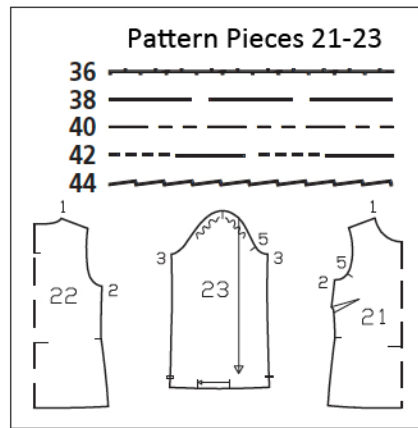
### Preparations

Print the pattern out on letter or A4 sized paper. It is very important to not scale or fit any of the pages, you must print the document in actual size. Your pattern will print on multiple pages, which you will then tile together. Arrange the sheets on a large, hard and flat surface matching up the numbers and letters (i.e. 6A to 6A). Cut or fold one of the sides and match the edge to it's corresponding side. Then, tape down in place so paper is secure.

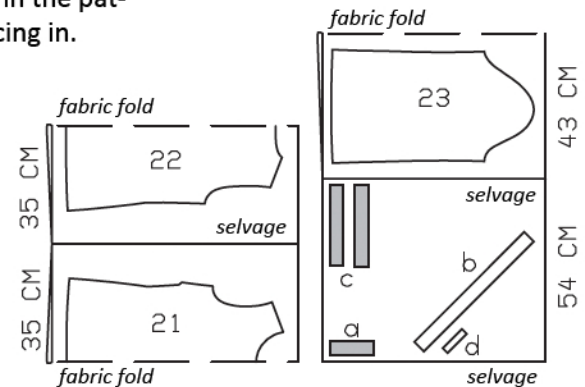
Trace the pattern pieces from the pattern sheet following the lines and markings for the correct size and the correct style (119). This pattern also includes pattern pieces, lines and markings for style 118, 120 & 121 that should be ignored.

**burda style magazine patterns do not have seam allowance included.**

Seam and hem allowance to be added:  
Seams and edges 1.5 cm (5/8 in), sleeve bands and lower sleeve edges 1 cm (3/8 in), hem 4 cm



Fold the fabric as shown in the pattern layout, right side facing in.



### Cutting Out

21 front, on a fold 1x  
22 back, on a fold 1x  
23 sleeve 2x

Draft the following pieces NOT included in the pattern:

a) slit facing, 13 – 14 – 14 – 15 – 15 cm (5 1/4 – 5 1/2 – 5 1/2 – 6 – 6 ins) long, 4 cm (1 5/8 ins) wide (incl. allowances),

b) bias strip for neck edge, 46 – 47 – 48 – 49 – 50 cm (18 1/8 – 18 1/8 – 19 – 19 1/4 – 19 3/4 ins) long, 4 cm (1 5/8 ins) wide (incl. allowances),

c) 2 sleeve bands with 1 cm (3/8 in) underlap, 24 – 25 – 26 – 27 – 28 cm (9 1/2 – 10 – 10 1/4 – 10 3/4 – 11 1/8 ins) long, 4 cm (1 1/2 ins) wide, finished width 2 cm (3/4 in),

d) bias strip for 2 loops, 10 cm (4 ins) long, 2 cm (3/4 in) wide (incl. allowances).

Interfacing: See shaded area on pattern layout. Iron Vilene Bias Tape/ stay tape to wrong side of neck and armhole edges and of front shoulder seam edges.

## Sewing

**Back slit:** At centre back, mark slit with basting stitches. Pin back slit facing piece to back, over slit mark, right sides together. Work from wrong side to stitch closely around marked slit. Slash between lines of stitching. Turn facing to inside. Press slit edges. Sew inside facing edges in place by hand.

Stitch side seams and shoulder seams. Trim seam allowances to 7 mm (1/4 in) wide, neaten together, and press onto back.

**Neck edge:** Fold bias strip lengthwise and press. Pin folded bias strip to neck edge so that fold edge of strip lies on garment piece, 1 cm (3/8 in) past seam line. Stitch along marked neck edge. Trim seam allowances. Turn strip to inside, turn in ends, and sew in place. Topstitch 7 mm (1/4) from neck edge.

Stitch sleeve seams from upper edges to slit marks. Turn slit allowances to inside, turn edges under, and stitch in place, stitching across ends of slits. Fold pleats in lower sleeve edges in direction of arrows and baste.

Fold bias strip for loops lengthwise, right side facing in. Stitch 3 mm (1/8 in) from fold edge. Turn right side out. Do not press fabric tube flat. Cut fabric tube into 2 equal pieces. Form each piece to a loop. Fold each sleeve band in half, wrong side facing in, and press fold edge. Unfold sleeve band again. Press allowance on one long edge (inside edge) to inside. Stitch sleeve band to lower sleeve edge, leaving underlap extending at back slit edge. Press allowances of attachment seams onto sleeve bands. Baste each loop to narrow front end of outer half of sleeve bands. Fold sleeve band lengthwise, right side facing in, and stitch across ends. Turn right side out. Baste inside edge in place. Baste upper underlap edges together. Topstitch sleeve bands close to attachment seams.

Set in sleeves, easing sleeve caps.

Press hem allowance to inside and sew in place by hand. Fasten back slit with a button and thread loop.

