

### 117 Coat

Burda sizes 36, 38, 40, 42, 44

Back length approx. 107 cm (42 ins)

### Materials

Brushed mohair fabric,  
width: 150 cm (59 ins)  
length: 2.40 – 2.45 – 2.45 – 2.50 – 2.50 m  
(2 5/8 – 2 3/4 – 2 3/4 – 2 3/4 – 2 3/4 yds).

Lining,  
width: 140 cm (55 ins)  
length: 1.70 – 1.75 – 1.75 – 1.80 – 1.80 m  
(1 7/8 – 2 – 2 – 2 – 2 yds).

Vilene Bias Tape/ stay tape.

Shoulder pads.

Recommended fabrics: Lightweight coat fabrics of wool or blends.

### Preparations

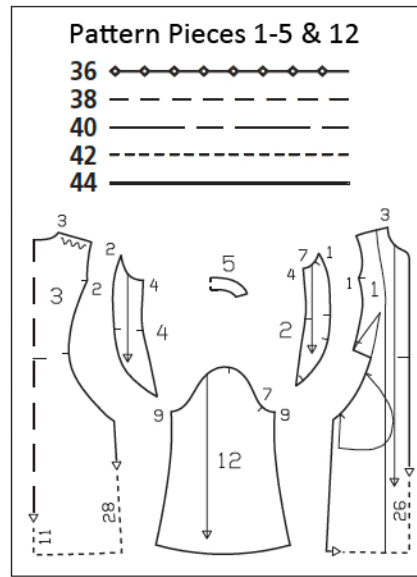
Print the pattern out on letter or A4 sized paper. It is **very important** to not scale or fit any of the pages, you must print the document in **actual size**. Your pattern will print on multiple pages, which you will then tile together. Arrange the sheets on a large, hard and flat surface matching up the numbers and letters (i.e. 6A to 6A). Cut or fold one of the sides and match the edge to it's corresponding side. Then, tape down in place so paper is secure.

Trace the pattern pieces from the pattern sheet following the lines and markings for the correct size and the correct style (117). This pattern also includes pattern pieces, lines and markings for style 114, 115 & 116 that should be ignored.

Trace the pocket piece from piece 1 as a separate pattern piece – it is the same for all sizes.

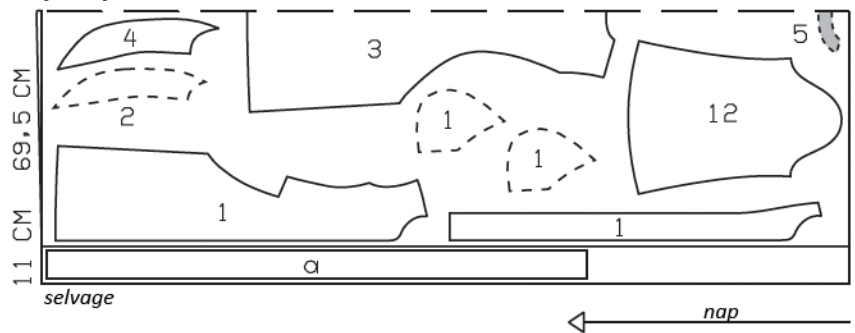
**burda style magazine patterns do not have seam allowance included.**

Seam and hem allowance to be added:  
Seams and edges 1.5 cm (5/8 in), hem and sleeve hems 4 cm (1 5/8 ins), lining 1.5 cm (5/8 in).



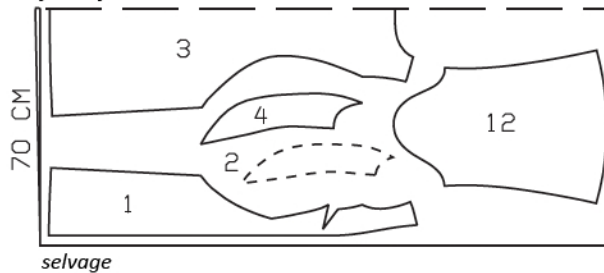
### Brushed Mohair, 150cm wide

*fabric fold*



### Lining, 140cm wide

*fabric fold*



Fold fabric as shown in the pattern layout. Right side faces in on a double layer of fabric; right side faces up on a single layer of fabric. Note direction of nap on mohair.

### Cutting Out

Mohair fabric:

- 1 front 2x
- front facing 2x
- pocket piece 4x
- 2 side front 2x
- 3 centre back, on a fold 1x
- 4 side back 2x
- 5 back facing, on a fold 1x
- 12 sleeve 2x

Draft the followin piece:

- a) tie belt, 160 – 164 – 168 – 172 – 176 cm (63 – 64 1/2 – 66 1/4 – 67

3/4 – 69 1/4 ins) long, 8 cm (3 1/4 ins) wide, finished width 4 cm (1 5/8 ins).

Lining: piece 1 minus width of facing; piece 3 minus neck facing and with an ease pleat of approx. 2 cm (3/4 in) at centre back; and also pieces 2, 4, and 12.

Vilene Bias Tape/ stay tape: Iron to wrong side of front, neck, and armhole edges and also of front shoulder seam edges. Also iron Vilene Bias Tape/ stay tape to wrong side of front pocket opening edges.

## Sewing

Stitch darts in fronts. Trim dart allowances to 1 cm (3/8 in) wide and press open, pressing points of darts flat.

Stitch side fronts to fronts, not stitching across pocket openings. Pin pocket pieces right sides together with allowances of pocket opening edges and stitch in place, directly along marked seam lines. Press pocket pieces forward and stitch together.

Stitch back section seams, side seams, shoulder seams, and facing seams. Press seam allowances open.

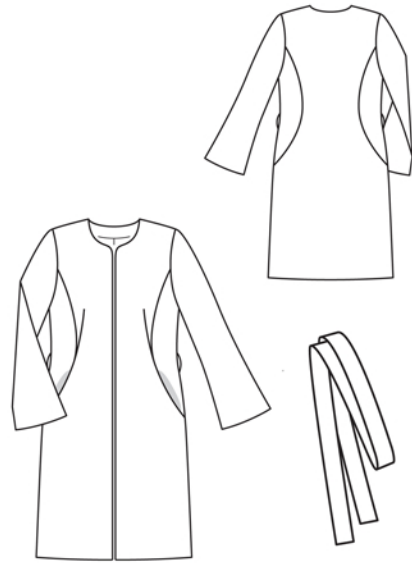
Pin facing right sides together with coat. Stitch along front and neck edges. Trim seam allowances. Turn facing to inside and press edges.

At hem edge, unfold facings. Press hem allowance to inside, then turn down again.

Stitch sleeve seams. Press sleeve hem allowances to inside and sew in place by hand. Set in sleeves. Sew shoulder pads in place.

**Sew lining:** On back lining piece, stitch ease pleat at top and bottom, each approx. 5 cm (2 ins) long, and baste in between. Press pleat to one side. Stitch darts and seams of lining. Set in sleeve linings.

**Line coat, hem:** Stitch lining right sides together with inside facing edge. Lay lining inside coat, with wrong sides together, pulling linings into sleeves. Turn hem allowance to inside and sew in place by hand. Turn lining edge under along hem edge, and press fold lightly. Slide upward in a shallow curve and pin to hem allowance. Sew facings and lining in place. Lay extra length of lining down and press lightly. Turn edges of sleeve linings under and sew to hem allowances. Lay extra length of lining down and press.



Fold tie belt lengthwise, right side in. Stitch edges together, leaving a section of seam open, for turning. Turn belt right side out. Sew opening closed.

At waist level, make thread loops, approx. 5 cm (2 ins) long, over side seams. For each loop, stretch 3–4 threads and cover closely with buttonhole stitch by hand.