

### 111 Dress

Burda sizes 36, 38, 40, 42, 44

Dress length from waist 115 cm (45 1/4 ins)

### Materials

Satin, all pieces cut in one direction.

width: 140 cm (55 ins)

length: 3.90 m (4 1/4 yds)

Silk chiffon (overskirt and bodice lining without sleeves), not cut in one direction.

width: 140 cm (55 ins)

length: 3.30 – 3.35 – 3.40 – 3.45 – 3.50 m

(3 5/8 – 3 3/4 – 3 3/4 – 3 7/8 – 3 7/8 yds)

\*If you need to cut all chiffon pieces in one direction, you will need the same amount of fabric as given for satin.

Vilene Bias Tape/ stay tape.

1 invisible zip, 60 cm (24 ins) long.

Brooch: approx. 25 sew-on “gems” (Swarovski) in a variety of shapes, colours, and sizes.

A piece of fabric and a “creative button”, Ø 36 mm (1 3/8 in) (or a round piece of buckram or cardboard).

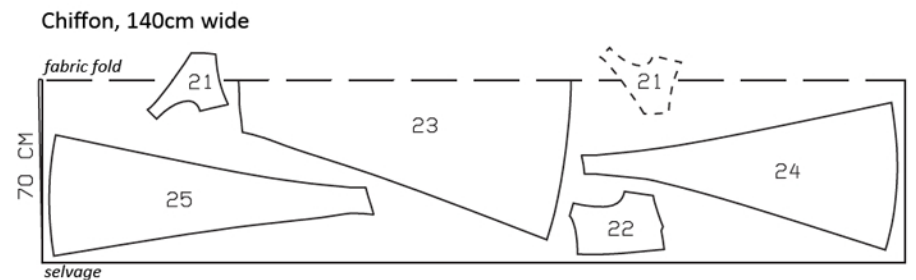
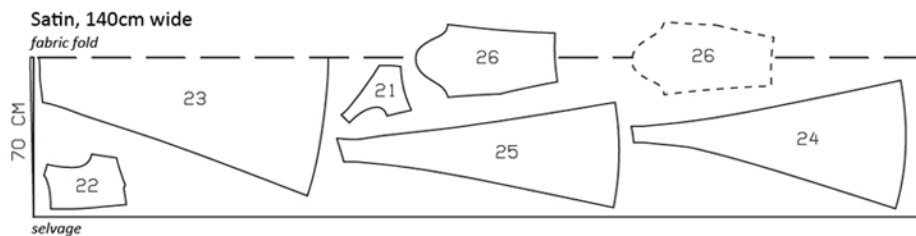
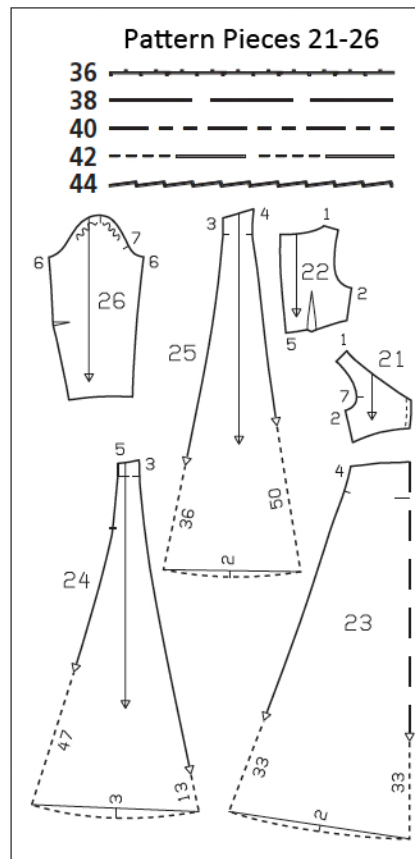
A small piece of lightweight fusible batting and 1 brooch pin.

Recommended fabrics: Lightweight, softly draping dress fabrics

### Preparations

Print the pattern out on letter or A4 sized paper. It is **very important** to not scale or fit any of the pages, you must print the document in **actual size**. Your pattern will print on multiple pages, which you will then tile together. Arrange the sheets on a large, hard and flat surface matching up the numbers and letters (i.e. 6A to 6A). Cut or fold one of the sides and match the edge to it's corresponding side. Then, tape down in place so paper is secure.

Trace the pattern pieces from the pattern sheet following the lines and markings for the correct size and the correct style (111). This pattern also includes pattern pieces, lines and markings for style 110 that should be ignored.



Cut from a double layer of fabric, right side facing in. The pieces shown extending over the fabric fold should be cut last from a single layer of fabric. Cut right and left pieces as opposites.

**burda style magazine patterns do not have seam allowance included.**

Seam and hem allowance to be added:

Seams and edges 1.5 cm (5/8 in), hem and sleeve hems 3 cm (1 1/4 ins) (flare sleeve hem allowance), overskirt hem 1.5 cm (5/8 in).

## Cutting Out

### Satin:

- 21 front 2x
- 22 back 2x
- 23 front skirt panel, on a fold 1x
- 24 centre back skirt panel 2x
- 25 side back skirt panel 2x
- 26 sleeve 2x

### Chiffon:

- 21 front lining piece 2x
- 22 back lining piece 2x
- 23 front overskirt panel on a fold 1x
- 24 centre back overskirt panel 2x
- 25 side back overskirt panel 2x

Vilene Bias Tape/ stay tape: Iron to wrong side of neck edges.

## Sewing

Gather fronts along centre seam edge to a length of 4 – 4.5 – 5 – 5.5 – 6 cm (1 5/8 – 1 7/8 – 2 – 2 1/4 – 2 3/8 ins). Stitch centre front seam, beginning at upper edge, exactly at marked neck edge. Stitch darts in back pieces and press darts toward centre. Stitch side seams and shoulder seams of dress bodice. Press seam allowances open.

Gather lining pieces as for pieces of main fabric and stitch together.

Stitch lining to neck edge of bodice, right sides facing. Turn lining up and stitch to seam allowance, close to seam. Turn lining to inside and press edges. Baste open lining edges in place.

On skirt, stitch back section seams and side seams.

Stitch all seams of overskirt as French seams (double seam): First lay the pieces together with wrong sides facing and stitch the 1.5 cm (5/8 in) wide seam allowances together, 7 mm (1/4 in) from fabric edge. Press seam allowances open. Then lay the pieces right sides together, with the seam exactly along the fold. Now stitch 8 mm (a generous 1/4 in) from fold edge, along marked seam line. Press seam allowances to one side. Lay overskirt on skirt, with wrong side



facing right side. Baste upper edges together. Baste back edges together, from upper edge to slit mark.

Stitch skirt to dress bodice. Press seam allowances open.

Beginning at neck edge, sew invisible zip to back edges see the “Helpful Hint” on next page. Leave upper ends of zip tapes extending. Turn upper ends of zip tapes under and sew in place. Clip seam allowances of chiffon at end of slit. Stitch centre back seams on chiffon (French seam) and satin each separately, stitching each from lower edge to zip slit.

Press hem allowance of satin skirt to inside and sew in place by hand.

Finish hem edge of overskirt with closely spaced zigzag stitching: Press allowance to wrong fabric side. Work from right side to stitch along fold edge with small, closely spaced zigzag stitches. On the inside, carefully trim close to stitching.

Stitch sleeve darts and press darts down. Stitch sleeve seams. Press sleeve hem allowances to inside and sew in place by hand.

Set in sleeves, easing sleeve caps.

Brooch: From the fabric, cut a circle with a diameter of 8 cm (3 1/4 ins). From fusible batting, cut a circle with a diameter of 4 cm (1 5/8 ins). Iron batter circle to centre of wrong side of fabric circle. Hand baste along edge of batting to make it visible on right fabric side. Sew the “gems” in place, inside the line of basting. Sew along edge of fabric with small stitches and leave ends of thread hanging. Lay fabric over the creative button, pull thread ends to gather fabric over button, and sew fabric edges together. Cover back with a circle of fabric (Ø 3 cm / 1 1/4 ins) and sew in place. Sew brooch pin in place.



These special zippers come in various lengths. The zipper should be at least 2 cm (3/4 in) longer than the slit. It is sewn in place before the seam below the slit is stitched. A special presser foot is required to sew the zipper in place.

### **Sewing the zipper in place:**

Open the zipper and push the coil back with your thumbnail to reveal the seam marking between the tape and the coil. Place the open zipper right side down on the right fabric side of one slit edge.

In order to stitch the zipper in place exactly along the marked seam line, you must first calculate the distance between the tape edge and the fabric edge as follows: width of seam allowance minus 1 cm (3/8 in) tape width = distance from edge of fabric. This will yield a value of 5 mm (3/16 in) if the width of the seam allowance is 1.5 cm (5/8 in).

Pin the top end of the zipper tape in place, the calculated distance from the edge of the fabric. The bottom end of the zipper will extend past the marked end of the slit. Place the presser foot on the zipper so that the coil is in the notch to the right of the needle (1). Stitch zipper in place, from the top to the marked end of the slit. Close zipper.

Place the other zipper tape face down on the opposite slit edge and pin in place at the top. Open zipper again. Place the presser foot on the top end of the zipper so that the coil is in the notch to the left of the needle (2). Sew the zipper in place, from the top to the end of the slit. Close zipper.

Now stitch the seam below the zipper, from bottom to top. Turn the loose lower end of the zipper out of the way, over the seam allowance. Stitch as close as possible to the last stitches of the zipper seams. Trim away excess zipper and bind the end with a scrap of fabric.