

101 Jacket

Burda sizes 36, 38, 40, 42, 44

Back length approx. 48 cm (19 ins)

3/4-sleeves, approx. 47 cm (18 1/2 ins) long

Materials

Duchesse,
width: 140 cm (55 ins)
length: 1.65 – 1.65 – 1.65 – 1.70 – 1.70 m (1 7/8 yds).

Lining,
width: 140 cm (55 ins)
length: 0.75 – 0.75 – 0.80 – 0.80 – 0.80 m (7/8 yd).

Interfacing.

Vilene Bias Tape/ stay tape.

4 fabric-covered buttons and 1 flat inside button.

Shoulder pads.

Recommended fabrics: Lightweight jacket fabrics with some body.

Preparations

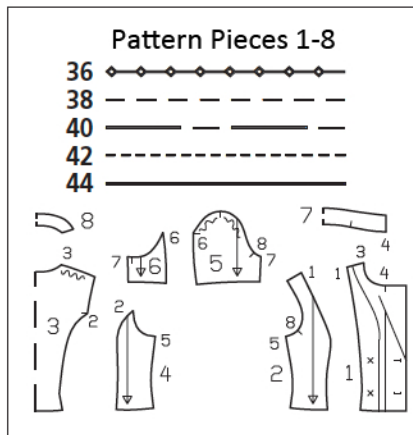
Print the pattern out on letter or A4 sized paper. It is **very important** to not scale or fit any of the pages, you must print the document in **actual size**. Your pattern will print on multiple pages, which you will then tile together. Arrange the sheets on a large, hard and flat surface matching up the numbers and letters (i.e. 6A to 6A). Cut or fold one of the sides and match the edge to its corresponding side. Then, tape down in place so paper is secure.

Trace the pattern pieces from the pattern sheet following the lines and markings for the correct size and the correct style (101). This pattern also includes pattern pieces, lines and markings for style 102, 103 & 104 that should be ignored. Trace the facing from piece 1 as a separate pattern piece.

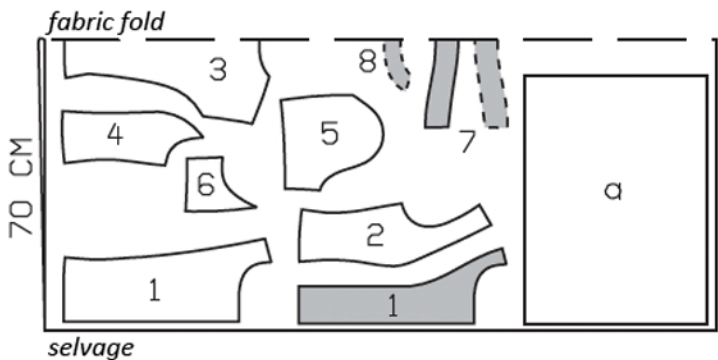
burda style magazine patterns do not have seam allowance included.

Seam and hem allowance to be added:

Seams and edges 1.5 cm (5/8 in), hem 4 cm (15/8 ins), lining 1.5 cm (5/8 in).



Cut from a double layer of fabric, right side facing in.



Cutting Out

Duchesse:

- 1 centre front 2x
- front facing 2x
- 2 side front 2x
- 3 centre back, on a fold 1x
- 4 side back 2x
- 5 upper sleeve 2x
- 6 under sleeve 2x
- 7 collar, on a fold 2x
- 8 back facing, on a fold 1x

Draft the following pieces NOT included in the pattern:

- a) 2 sleeve flounces, 60 cm (23 3/4 ins) long, 44 cm (17 1/2 ins) wide, finished width 22 cm (8 3/4 ins).

Lining: piece 1 minus width of facing; piece 3 minus neck facing and with an ease pleat of approx. 2 cm (3/4 in) at centre back; and also pieces 2, 4, 5, and 6.

Interfacing: See shaded area on pattern layout. Also interface hem allowances. Iron Vilene Bias Tape/ stay tape to armhole edges.

Sewing

Stitch front and back section seams. Stitch side seams, shoulder seams, and facing seams. Press seam allowances open.

Notched collar: Pin facing to coat, right sides together. Build a little extra fullness into corners of lapels. Stitch facing in place, along front edges and edges of lapels, up to seam marks. Leave facing lying right sides together with coat for now. Stitch collar pieces together along outer edges, building a little extra fullness into top collar, beginning and ending stitching on narrow edges, exactly at seam line on attachment edge. Turn collar right side out. Lay collar between coat and facing. Stitch under collar to neck edge of coat and stitch top collar to facing. Press seam allowances of collar attachment seams open. Turn facing to inside. Pin collar attachment seams together exactly. Turn back facing up and stitch seam allowances together, close to collar attachment seam. Turn facing down.

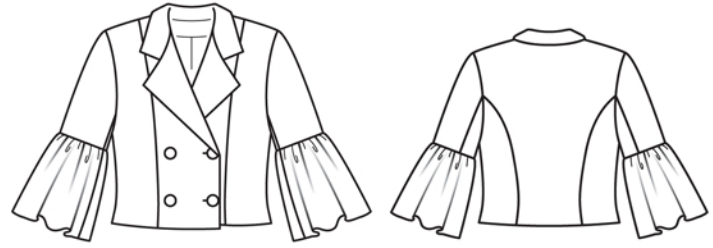
At hem edge, unfold facings. Press hem allowance to inside, then turn down again.

Stitch sleeve seams. Stitch narrow edges of each sleeve flounce piece together. Fold flounces in half, wrong side facing in. Do not press fold edge. Gather flounces and stitch to lower sleeve edges.

Set in sleeves, easing sleeve caps. Sew shoulder pads in place.

Sew lining: On back lining piece, stitch ease pleat at top and bottom, each approx. 5 cm (2 ins) long, and baste in between. Press pleat to one side. Set in sleeve linings.

Stitch lining right sides together with inside facing edge. Lay lining inside jacket, with wrong sides facing, pulling linings into sleeves. Turn hem allowance to inside and sew in place by hand. Turn lining edge under, along hem edge. Press fold edge lightly, slide upward in a shallow curve, and pin to hem allowance. Sew facings and lining in place. Lay extra length of lining down and press lightly. On sleeves, turn lining edges under and sew to flounce attachment seams.



Work buttonholes in right front. Work top buttonhole in left front, for inside button.