

### 144 Girl's Dress

Height 104, 110, 116, 122, 128 cm  
 Length from waist 32 – 34 – 37 – 39 – 41 cm  
 (12 3/4 – 13 1/2 – 14 1/2 – 15 1/2 – 16 1/4 ins)

### Materials

Cotton jersey,  
 width: 150 cm (59 ins)  
 length: 0.95 – 1.00 – 1.00 – 1.05 – 1.15 m  
 (1 1/8 – 1 1/8 – 1 1/8 – 1 1/4 – 1 3/8 yds).

Vilene Bias Tape/stay tape.

1 small button.

Recommended fabrics: Jersey.

### Preparations

Print the pattern out on letter or A4 sized paper. It is **very important** to not scale or fit any of the pages, you must print the document in **actual size**. Your pattern will print on multiple pages, which you will then tile together. Arrange the sheets on a large, hard and flat surface matching up the numbers and letters (i.e. 6A to 6A). Cut or fold one of the sides and match the edge to it's corresponding side. Then, tape down in place so paper is secure.

Trace the pattern pieces from the pattern sheet following the lines and markings for your size.

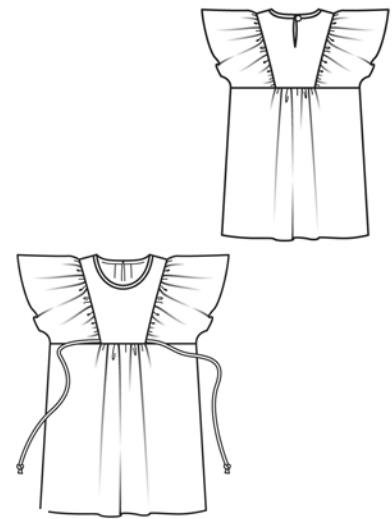
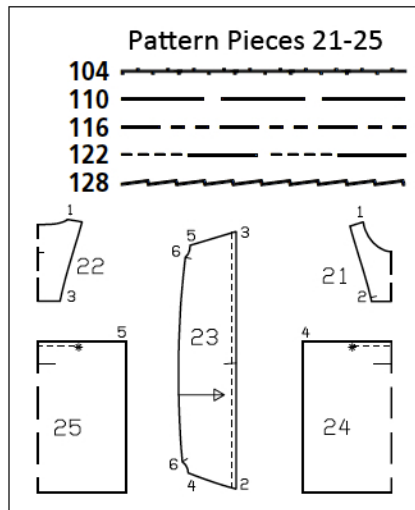
**burda style magazine patterns do not have seam allowance included.**

Seam and hem allowance to be added:  
 Seams and edges 1.5 cm (5/8 in), no allowances on lower edges of front and back, and no allowances on lower edge of sleeve (seam number 6).

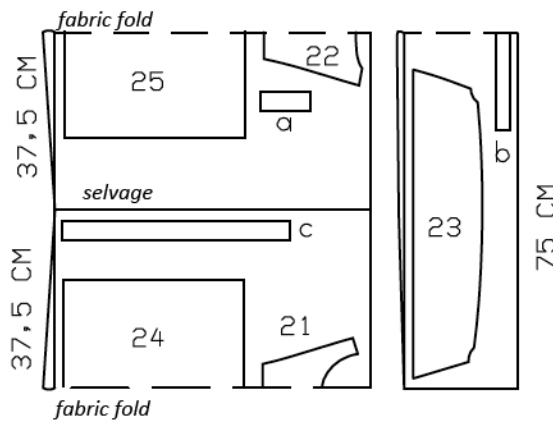
### Cutting Out

21 front yoke, on a fold 1x  
 22 back yoke, on a fold 1x  
 23 ruffled sleeves 2x  
 24 front, on a fold 1x  
 25 back, on a fold 1x

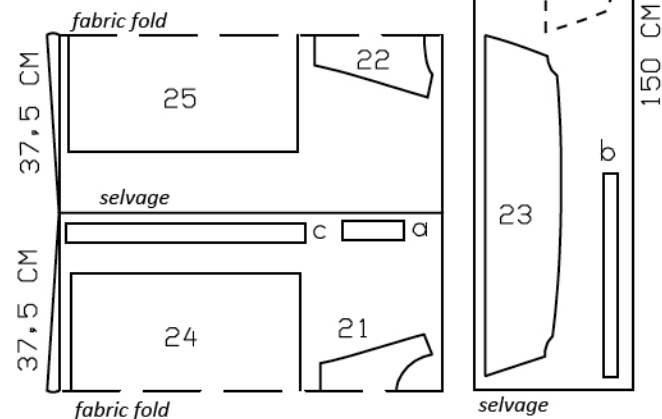
Vilene Bias Tape/stay tape: Iron to wrong side of neck edge, next to seam allowance.



### Sizes 104-122



### Size 128



Fold the fabric as shown in the pattern layout. Right side faces in on a double layer of fabric; right side faces up on a single layer. Cut right and left sleeves as opposites.

Draft the following pieces NOT included in the pattern:

- a) back slit facing, 11 – 11 – 12 – 13 – 13 cm (4 3/8 – 4 3/8 – 4 3/4 – 5 1/4 – 5 1/4 ins) long, 4 cm (1 5/8 ins) wide (incl. allowances),
- b) binding strip for neck edge, 41 – 42 – 42 – 43 – 43 cm (16 1/4 – 16 1/2 – 16 1/2 – 17 – 17 ins) long, 3 cm (1 1/4 ins) wide (incl. allowances),
- c) 2 tie bands, 50 cm (19 3/4 ins) long, 4 cm (1 5/8 ins) wide (incl. allowances).

## Sewing

**Back slit:** At centre of back yoke, Mmark slit with basting thread. Pin slit facing to back yoke, over slit mark, right sides together. Work from wrong side to stitch closely around slit mark. Slash between lines of stitching. Turn facing to inside. Press edges of slit. Baste upper ends of facing in place.

Stitch shoulder seams of yoke, beginning and ending exactly at marked neck edge. Press seam allowances onto front.

**Bind neck edge:** Trim away seam allowance on neck edge. Pin binding strip to neck edge, right sides facing. Stitch 7 mm (1/4 in) from edge. Turn binding up. Turn in ends of binding. Fold binding over edge to inside, turn raw edge under, and baste over joining seam. Work from right side to topstitch binding close to joining seam and ends.

Turn in one end of each tie band. Fold tie bands lengthwise, right side facing in. Stitch 1 cm (3/8 in) from fold edge. Turn bands right side out and press. Sew turned-in ends of bands closed. Baste tie bands to side edges of front yoke, below marking.

Gather joining edge of each sleeve to match side yoke edge. Stitch sleeve to side yoke edge, from seam number 2 to seam number 3. Press seam allowances onto yoke.

Gather upper front edge and upper back edge between asterisks. Stitch sleeve and front yoke to front, from seam number 4. Stitch sleeve and back yoke to back, from seam number 5. Press seam allowances onto yokes and sleeves.

Stitch side and sleeve seams as continuous seams. Trim ends of seam allowances at an angle. Trim seam allowances to 7 mm (1/4 in) wide and neaten edges together. Press allowances to one side.

Fasten back slit with a button and a thread loop.

