

140 Dress

Burda sizes 34, 36, 38, 40, 42

Length of skirt from waist 52 cm (20 1/2 ins)

Materials

Shot taffeta,
width: 140 cm (55 in)
length: 2.30 – 2.35 – 2.40 – 2.45 – 2.50 m
(2 5/8 – 2 5/8 – 2 5/8 – 2 3/4 – 2 3/4 yds).

Lining,
width: 140 cm (55 in)
length: 2.00 – 2.00 – 2.05 – 2.05 – 2.10 m
(2 1/4 – 2 1/4 – 2 1/4 – 2 1/4 – 2 3/8 yds).

Interfacing.

1 invisible zip, 60 cm (24 ins) long.

Recommended fabrics: Lightweight dress fabrics with some body.

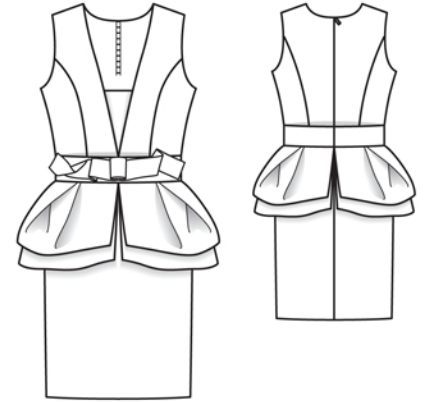
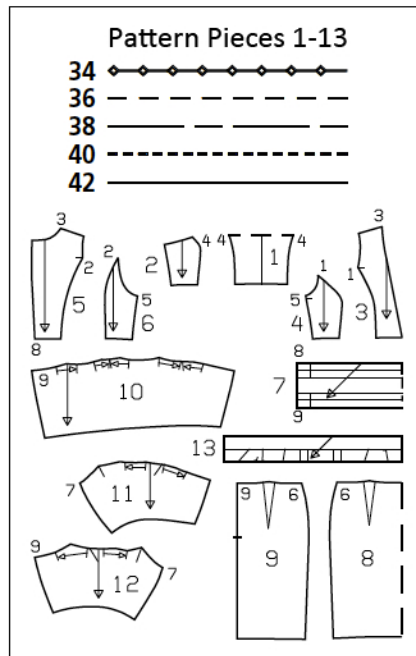
Preparations

Print the pattern out on letter or A4 sized paper. It is **very important** to not scale or fit any of the pages, you must print the document in **actual size**. Your pattern will print on multiple pages, which you will then tile together. Arrange the sheets on a large, hard and flat surface matching up the numbers and letters (i.e. 6A to 6A). Cut or fold one of the sides and match the edge to it's corresponding side. Then, tape down in place so paper is secure.

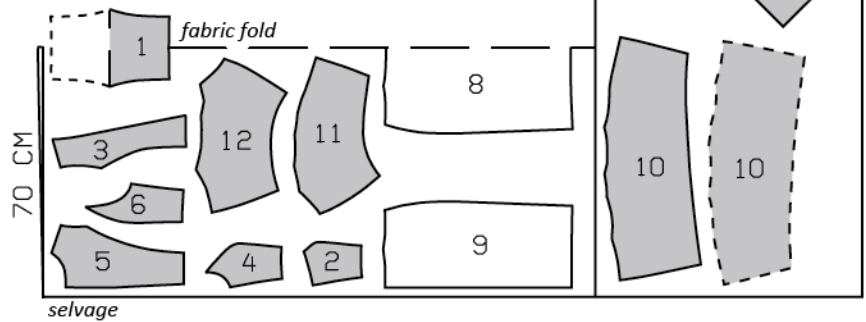
Trace the pattern pieces from the pattern sheet following the lines and markings for your size.

burda style magazine patterns do not have seam allowance included.

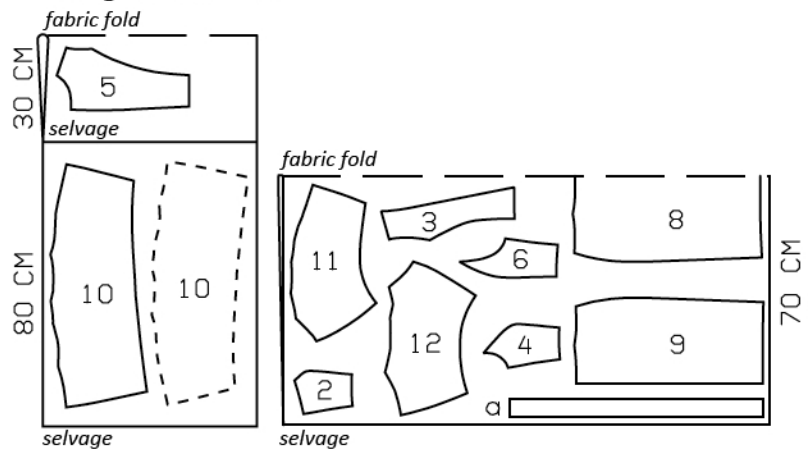
Seam and hem allowance to be added:
Seams and edges 1.5 cm (5/8 in), hem 4 cm (1 5/8 ins), lining 1.5 cm (5/8 in).



Shot Taffeta, 140cm wide



Lining, 140cm wide



Fold the fabric as shown in the pattern layout. Right side faces in on a double layer of fabric. Right side faces up on a single layer of fabric. Cut right and left pieces as opposites. The piece shown extending over the fabric fold must be cut last from a single layer of fabric.

Cutting Out

Shot taffeta:

- 1 centre inside front, on a fold 1x
- 2 side inside front 2x
- 3 centre front 2x
- 4 side front 2x
- 5 centre back 2x
- 6 side back 2x
- 7 waistband, on a fold 1x
- 8 front skirt panel, on a fold 1x
- 9 back skirt panel 2x
- 10 lower peplum piece 2x
- 11 upper front peplum piece 2x
- 12 upper back peplum piece 2x
- 13 band for bow 1x

Lining: pieces 2 to 6 and 8 to 12,

Draft the following pieces NOT included in the pattern:

- a) inside waistband piece, 67 – 71 – 75 – 79 – 83 cm (26 1/2 – 28 – 29 3/4 – 31 1/4 – 32 3/4 ins) long, 5 cm (2 ins) wide.

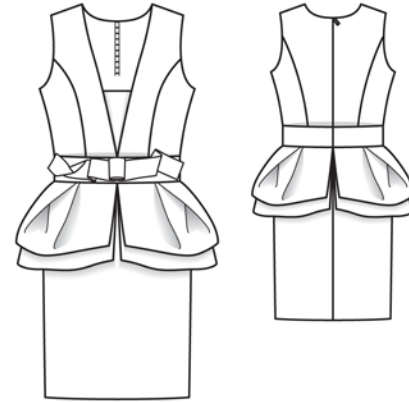
Interfacing: See pattern layout.

Sewing

Stitch side fronts to centre fronts and stitch side backs to centre backs. Press seam allowances onto centre pieces. Stitch shoulder seams. Press seam allowances open.

Sew invisible zip to back opening edges, from the top down, approx. 20 cm (8 ins) long, see the "Helpful Hint" on last page.

Stitch section seams and shoulder seams of lining pieces. Lay lining pieces right sides together with front and back pieces. Pin to angled front edges and to neck edges. Pin armhole edges together. At zip opening, turn lining back, approx. 5 mm (3/16 in) before marked seam line, and pin to neck edge. Turn allowances at back opening edges to outside and pin in place, over lining. Stitch along angled front edges and neck edge and also along armhole edges. Trim seam allowances. Clip curves close to stitching. Turn front and back pieces right side out by pushing each front toward the back, through tunnel at shoulder. Baste lining to wrong side of fronts and leave loose at back.



Lay side inside front pieces of outer fabric and lining each right sides together. Stitch along upper edge, beginning and ending exactly at corner, at seam number 4. Turn lining up and press seam allowances open. Stitch side inside front pieces to centre inside front, from lower edge to corner. Stitch side front lining pieces to centre inside front, from corner. Press seam allowances onto centre front. Fold centre inside front on fabric fold line, wrong side facing in, and turn side front lining pieces to inside. Baste side and lower edges together.

Lay fronts on inside front. Baste side edges together, from marking (seam number 5), and baste lower edges together – front corners of front pieces meet at centre front.

On back pieces, turn lining at armhole edges up. Lay backs (outer fabric) right sides together with fronts. Stitch side edges together. Leave backs lying on fronts. Lay lining around armhole edges down over fronts and stitch to side edges, exactly in line of previous stitching, ending 5 mm (3/16 in) above marked lower edge. Pull fronts out of back and lay back lining pieces wrong sides together with back pieces of outer fabric. Stitch side seams. Turn lower edge of back lining pieces up and pin.

Stitch darts in skirt panels and press toward centre. Stitch skirt side seams.

Lay lower peplum pieces of outer fabric and lining right sides together. Stitch along front, lower, and back edges. Turn lower peplum pieces right side out. Press edges. Pin upper edges together. Fold pleats in direction of arrows and baste to upper edge. Baste peplum pieces to upper edge of skirt, from front to centre back.

Stitch side seams on upper peplum pieces of outer fabric and lining (seam number 7). Sew lining to upper peplum pieces as for lower peplum pieces. Fold pleats in direction of arrows and baste to upper edge. Fold remaining pleats – pleat fold at abutting line – and baste to upper edge. Baste upper peplum pieces to upper edge of skirt over lower peplum.

Fold waistband lengthwise with wrong side facing in. Stitch marked stitching lines together. Unfold edges of waistband out flat, fold pleats in direction of arrows, and press.

Sewing Continued...

Stitch waistband right sides together with upper edge of skirt and lower edge of dress bodice, not catching pleats of waistband and leaving back lining pieces free. Press seam allowances onto waistband.

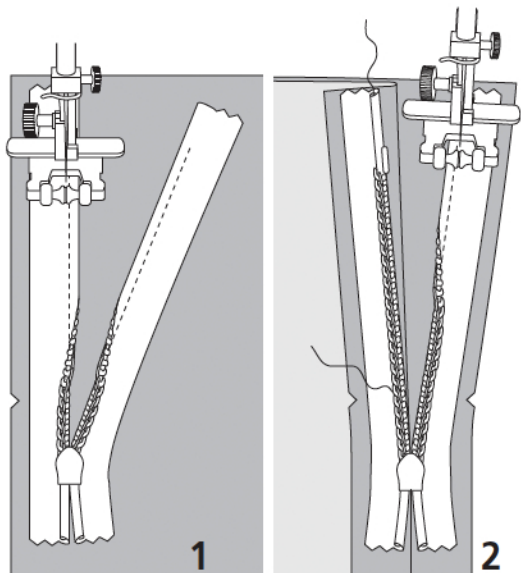
Stitch invisible zip in place, to slit mark. Stitch centre back seam from lower edge to zip.

Stitch darts and seams of skirt lining, leaving slit for zip open, 2 cm (3/4 in) longer than on outer fabric. Also leave a 20 cm (8 in) long slit in centre seam for vent. Stitch waistband lining to skirt lining.

Stitch skirt lining with waistband to lower edge of back lining pieces. Pin front waistband lining to upper waistband joining seam of dress (skirt lining points up) and stitch in place, close to seam. Turn waistband and skirt lining down. Turn in lining edges and sew to zip tapes.

Hem dress. Turn in hem allowance of lining and stitch so that lining is 2 cm (3/4 in) shorter than dress. Turn in allowances at slit edges and stitch.

Fold band for bow lengthwise, right side facing in. Stitch edges of band together, leaving a section of seam open, for turning. Trim allowances. Turn band right side out and press edges. Sew seam opening closed. To form the bow, first pin the marked stitching lines together and stitch. Unfold the band again. Lay the band on the waistband and sew the bow seam to centre front. Fold the loops of the bow to the abutting lines and hold in place with a few stitches, by hand. Fold band for bow on fold lines and lay toward each abutting line. Hold the folds in place on the waistband with a few stitches by hand. Do not press the folds.



These special zippers come in various lengths. The zipper should be at least 2 cm (3/4 in) longer than the slit. It is sewn in place before the seam below the slit is stitched. A special presser foot is required to sew the zipper in place.

Sewing the zipper in place:

Open the zipper and push the coil back with your thumbnail to reveal the seam marking between the tape and the coil. Place the open zipper right side down on the right fabric side of one slit edge.

In order to stitch the zipper in place exactly along the marked seam line, you must first calculate the distance between the tape edge and the fabric edge as follows: width of seam allowance minus 1 cm (3/8 in) tape width = distance from edge of fabric. This will yield a value of 5 mm (3/16 in) if the width of the seam allowance is 1.5 cm (5/8 in).

Pin the top end of the zipper tape in place, the calculated distance from the edge of the fabric. The bottom end of the zipper will extend past the marked end of the slit. Place the presser foot on the zipper so that the coil is in the notch to the right of the needle (1). Stitch zipper in place, from the top to the marked end of the slit. Close zipper.

Place the other zipper tape face down on the opposite slit edge and pin in place at the top. Open zipper again. Place the presser foot on the top end of the zipper so that the coil is in the notch to the left of the needle (2). Sew the zipper in place, from the top to the end of the slit. Close zipper.

Now stitch the seam below the zipper, from bottom to top. Turn the loose lower end of the zipper out of the way, over the seam allowance. Stitch as close as possible to the last stitches of the zipper seams. Trim away excess zipper and bind the end with a scrap of fabric.