

129 Pullover

Burda sizes 36, 38, 40, 42, 44

Back length approx. 75 cm (30 ins)

The back is 4 cm (1 5/8 ins) longer than the front.

Note: On lower edges of the front, back, and sleeves, the knit stitches of the fabric are picked up with a knitting needle, then cast off. For this, the yarn from the remaining fabric is used. Unravel the leftover fabric and wrap the yarn in a ball. Choose the knitting needle size to match the weight of the yarn.

Materials

Knit mohair fabric,
width: 125 cm (49 ins)

length: 1.60 – 1.60 – 1.60 – 1.60 – 1.80 m
(1 3/4 – 1 3/4 – 1 3/4 – 1 3/4 – 2 yds).

Vilene Bias Tape/stay tape. Bias tape, 4 cm (1 5/8 ins) wide and 0.80 – 0.80 – 0.80 – 0.85 – 0.85 m (7/8 – 7/8 – 7/8 – 1 – 1 yd) long.

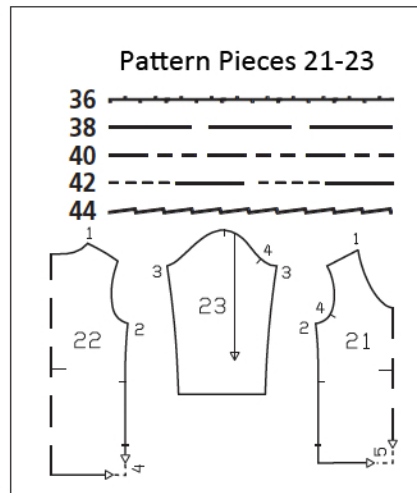
Knitting needles in size to match yarn.

Recommended fabrics: Fine knit fabrics. Use only knit fabrics which can be unravelled easily.

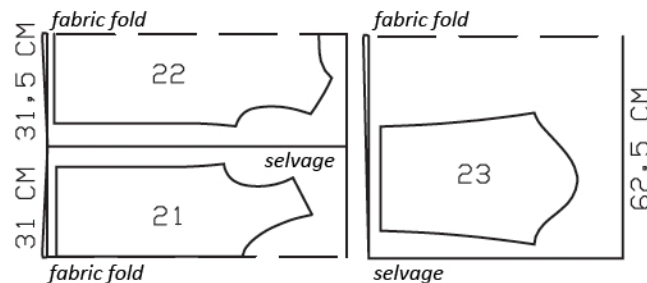
Preparations

Print the pattern out on letter or A4 sized paper. It is **very important** to not scale or fit any of the pages, you must print the document in **actual size**. Your pattern will print on multiple pages, which you will then tile together. Arrange the sheets on a large, hard and flat surface matching up the numbers and letters (i.e. 6A to 6A). Cut or fold one of the sides and match the edge to it's corresponding side. Then, tape down in place so paper is secure.

Trace the pattern pieces from the pattern sheet following the lines and markings for the correct size and the correct style (129). This pattern also includes pattern pieces, lines and markings for style 128 that should be ignored. **burda style magazine patterns do not have seam allowance included.** To be added: Seams and edges 1.5 cm (5/8 in), hem and sleeve hems 1.5 cm (5/8 in).

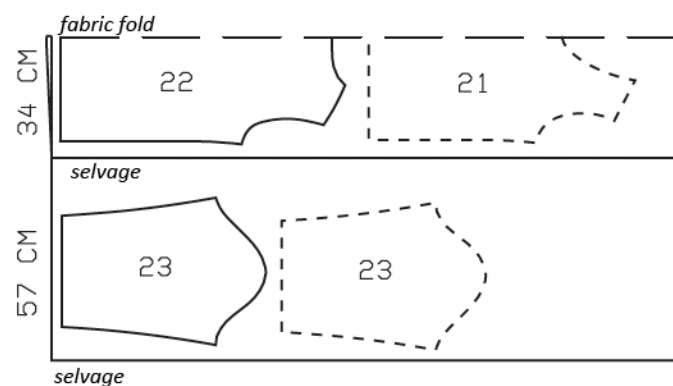


Sizes 36-42



Fold the fabric as shown in the pattern layout. Right side faces in on a double layer of fabric; right side faces up on a single layer of fabric. Cut right and left sleeves as opposites.

Size 44



Cutting Out

- 21 front, on a fold 1x
- 22 back, on a fold 1x
- 23 sleeve 2x

Lay the pattern pieces on the knit fabric as shown in the pattern layout. The lower edge of each pattern piece should lie along a row of knit stitches. Cut out the pieces with seam and hem allowances. Unravel the stitches of the leftover knit fabric and wrap into a tight ball to smooth out the yarn.

Vilene Bias Tape/stay tape: Iron to wrong side of front shoulder edges.

Sewing

On lower edges of front and back and on lower sleeve edges, unravel the knit stitches to the hem line. Pick up the stitches with the knitting needle and cast off loosely.

Stitch right shoulder seams. Press seam allowances open.

Neck edge: Fold bias tape in half lengthwise and press. Stitch folded bias tape to right fabric side of neck edge so that fold edge of tape lies on garment piece, 1 cm (3/8 in) past seam line. Trim seam allowances. Turn bias tape to inside. Sew inside edge of bias tape in place by hand.

Stitch left shoulder seam. Press seam allowances open. Sew ends of seam allowances to neck edge.

Stitch side seams, leaving slits open. Press seam allowances open and press slit allowances to inside. Turn edge of slit allowances under and sew in place by hand.

Stitch sleeve seams. Trim seam allowances to 7 mm (1/4 in) wide, neaten together, and press to one side. Turn lower ends of seam allowances under, at an angle and sew in place.

n Set in sleeves.

