

### 136B Dress

Burda sizes 34, 36, 38, 40, 42

Back length: approx. 93 cm (37 ins)

### Materials

fine knit fabric,  
width: 130 cm (51 ins)  
length: 1.35 – 1.35 – 1.35 – 2.15 – 2.15 m  
(1 5/8 – 1 5/8 – 1 5/8 – 2 1/2 – 2 1/2 yds).

Bias tape,  
width: 4 cm (1 5/8 ins)  
length: 0.65 – 0.70 – 0.70 – 0.70 – 0.75 m (7/8 yd).

Vilene Bias Tape/stay tape.

Recommended fabrics: Knit fabrics.

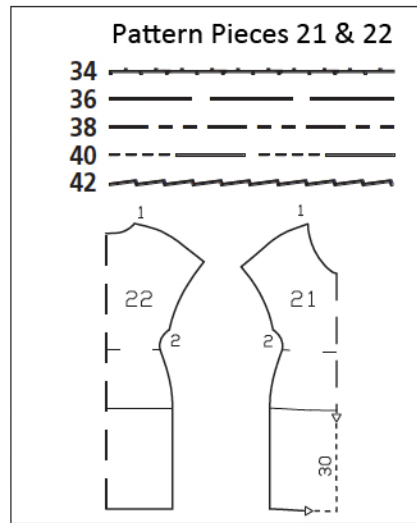
### Preparations

Print the pattern out on letter or A4 sized paper. It is **very important** to not scale or fit any of the pages, you must print the document in **actual size**. Your pattern will print on multiple pages, which you will then tile together. Arrange the sheets on a large, hard and flat surface matching up the numbers and letters (i.e. 6A to 6A). Cut or fold one of the sides and match the edge to it's corresponding side. Then, tape down in place so paper is secure.

Trace the pattern pieces from the pattern sheet following the lines and markings for the correct size and the correct style (136B). This pattern also includes pattern pieces, lines and markings for style 136A that should be ignored.

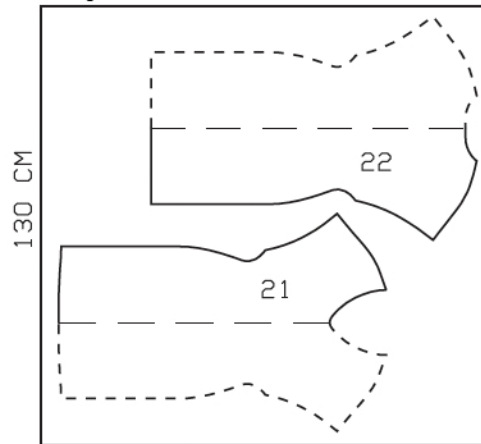
**burda style magazine patterns do not have seam allowance included.**

Seam and hem allowance to be added:  
Seams and edges 1.5 cm (5/8 in), hem 4 cm (1 5/8 ins).



Sizes 34-38

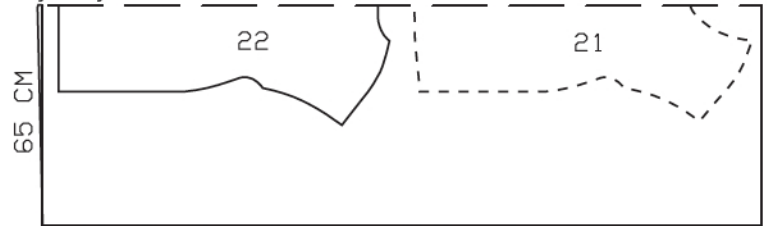
selvage



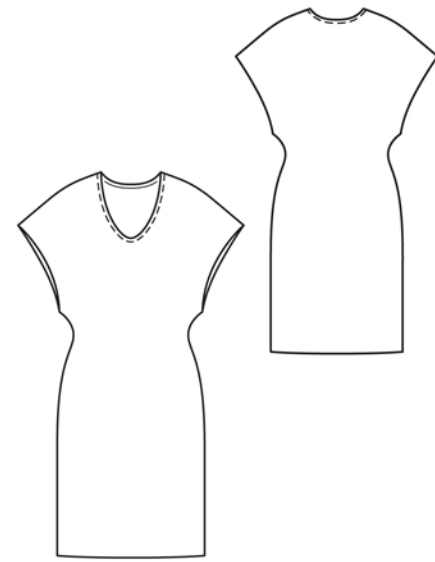
selvage

Sizes 40, 42

fabric fold



selvage



Right side faces in on a double layer of fabric; right side faces up on a single layer of fabric.

### Cutting Out

21 front, on a fold 1x  
22 back, on a fold 1x

Vilene Bias Tape/stay tape: Iron to wrong side of front shoulder edges.

## Sewing

Stitch shoulder seams. Press bias tape and seam allowances onto back, trim to a width of 7 mm (1/4 in), and neaten edges together.

Neck edge: Fold bias tape in half lengthwise and press. Pin folded bias tape to right fabric side of neck edge so that fold edge of tape lies on garment piece, 7 mm (1/4 in) past seam line. Begin and end at one shoulder seam, turn under end of tape which lies below back and lay other end on top. Stitch along neck edge. Trim seam allowances. Turn bias tape to inside. Topstitch neck edge 5 mm (3/16 in) wide.

Press hem allowances of cut-on sleeves to inside, fold half width under, and sew in place by hand.

Stitch side seams. Trim seam allowances, neaten together, and press onto back. Sew upper ends of side seam allowances in place by hand.

On lower edge of dress, press hem allowance to inside and sew in place loosely by hand.

