

### 134 Poncho

**Burda sizes 34 – 38 and 40 – 44**

Back length 69 – 74 cm (27 1/4 – 29 1/4 ins)

### Materials

Cable knit fabric, with a pattern repeat of 5 cm (2 ins)

width: 88 cm (35 ins)

length: 3.75 – 3.90 m (4 1/4 yds).

A piece of cotton fabric, 10 x 25 cm (4 x 10 ins).

A piece of interfacing. Braid, 1 cm (3/8 in) wide and 3.10 – 3.30 m (3 1/2 – 3 5/8 yds) long.

Recommended fabrics: Knit fabrics.

### Preparations

Follow the diagram to make a full-size pattern piece for the front and back (a).

Add seam and hem allowances:

Seams and edges 1.5 cm (5/8 in).

### Cutting Out

Knit fabric:

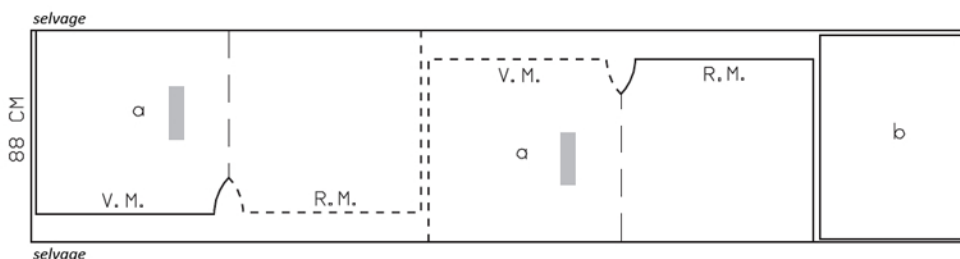
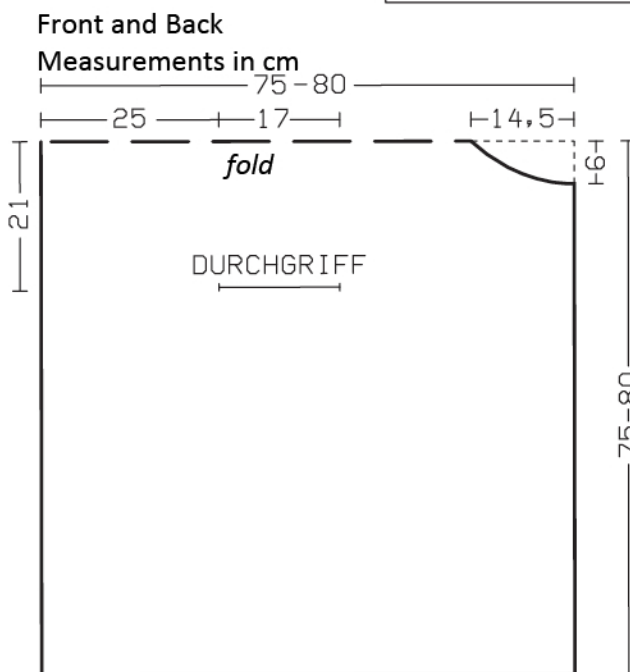
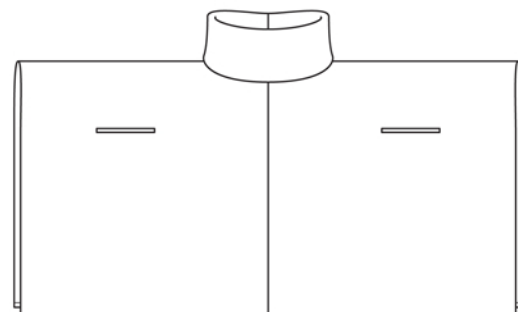
a) front and back according to diagram, cut 2, on a fold,

b) collar, 85 cm (33 1/2 ins) long, 60 cm (24 ins) wide, finished width 30 cm (12 ins).

Lay side edge of front and back each on the edge of the knit fabric (selvage). The centre seam should lie centred between two cables. Mark the fabric fold line (shoulder) with basting thread. Also use basting thread to mark each arm opening on front, according to diagram. Cut strips of interfacing, 20 cm (8 ins) long and 4 cm (1 5/8 ins) wide. Iron these strip to wrong side of fabric, over marked arm openings (see also pattern layout).

Cotton fabric:

2 facing strips for the arm openings, 23 cm (9 1/8 ins) long, 7 cm (2 3/4 ins) wide (incl. allowances).



## Sewing

On facing strips, press all edges to wrong side, 1 cm (3/8 in) wide. Lay facing strips over marked arm openings on fronts, right sides together, and pin. Stitch a rectangle around each marked opening, stitching 5 mm (3/16 in) from each side and stitching across the ends. Clip diagonally into corners. Turn facing strips to inside. Press edges of arm openings. Sew inside edges of facing strips in place by hand.

Stitch centre front and back seams. Neaten seam allowances and press open.

Stitch shorter edges of collar together (centre back seam). Press seam allowances open. Fold collar to half width, with wrong side facing in, and press. Pin collar attachment edges together. Stitch lines of machine basting (longest stitch setting) to each side of seam line. Use these threads to ease collar edge to match neck edge. Stitch collar to neck edge. Neaten seam allowances together.

Lay trim on hem allowance, 5 mm (3/16 in) from hem line. Zigzag stitch trim in place, turning ends under. Turn hem allowance with trim to inside and sew in place by hand.

