

167 Dress

Burda Sizes 34, 36, 38, 40, 42

Length from waist = 60cm

Materials

Lightweight, soft flowing fabrics,
width: 140cm
length: 2 1/2 m for all sizes

Lining,
width: 140cm wide
length: 2 m for all sizes

Interfacing, 90cm wide.

1 invisible zipper, 40cm long.

Recommended fabrics: Dress fabrics such as crepe de chine, creoe satin, georgette, and chiffon.

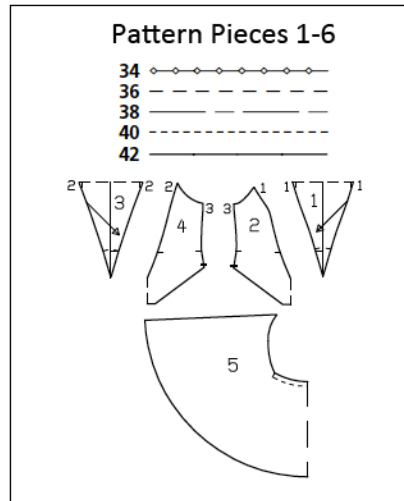
Preparations

Print the pattern out on letter or A4 sized paper. It is **very important** to not scale or fit any of the pages, you must print the document in **actual size**. Your pattern will print on multiple pages, which you will then tile together. Arrange the sheets on a large, hard and flat surface matching up the numbers and letters (i.e. 6A to 6A). Cut or fold one of the sides and match the edge to it's corresponding side. Then, tape down in place so paper is secure.

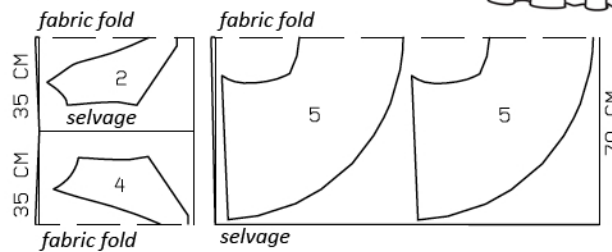
Trace the pattern pieces from the pattern sheet following the lines and markings for your size.

burda style magazine patterns do not have seam allowance included.

Seam and hem allowance to be added:
Seams and edges 1.5 cm (5/8 in) hem, 2 cm.

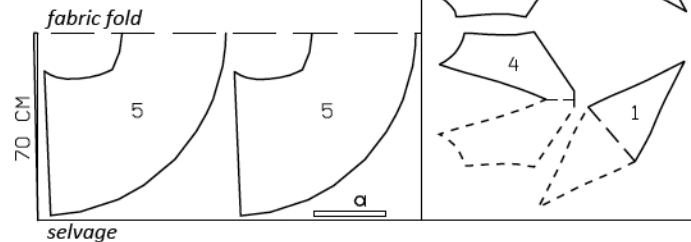


Lining, 140cm wide



Cut from a double layer of fabric.
Right sides facing in.

Dress Fabric, 140cm wide



Cutting Out

Dress Fabric:

- 1 Center front on fold x1
- 2 Side fronts on fold x1
- 3 Center back on fold x1
- 4 Side backs on fold x1
- 5 Front and back skirt 2x

Interfacing:

iron 2cm wide strips to the side fronts and side backs. As well as to the side seams on the skirt pieces.

Draft the following pieces NOT included in the pattern:

- a) 2 straps, 30cm long, 3cm wide (including allowances)

Lining:

- 2 Side fronts on fold 1x
 - 4 Side backs on fold 1x
 - 5 Front an back skirt 2x
- Cut skirt lining pieces with a 1cm hem allowance.

Sewing

Skirt:

Stitch the side seams of the skirt pieces, right sides together, and press open. Stitch the side seams of the lining skirt pieces, right sides together, and press open. Place the lining skirt inside the dress skirt, wrong sides together. stitch the tops of the skirt pieces together, matching up the side seams. Now the skirt and skirt lining pieces should be held together by the stitching at the top.

Notice the astericks on the skirt pieces as indicated on the pattern. Stitch a basting stitch from asterick to asterick, leaving long thread tails. You should be stitch through two layers of fabric (the dress fabric and lining). Gather in between this section until it measure 6.5cm. Tie long thread tails into knots at each end to secure gathering. You may even want to stitch across gathers to secure in place.

Bodice:

Stitch the lining front piece (piece 2) to one side of the center front piece (piece 1), right sides together. Stitch the lining back piece (piece 4) to one side of the center back piece (piece 3), right sides together.

Stitch the dress fabric front piece to the other side of piece 1, right sides together. Stitch the dress fabric back piece to the other side of piece 3, right sides together.

Fold the center front middle piece (piece 1) along the horizontal fold line. So now the center front piece is folded at the center and the two end points meet, right sides together. Do the same to the back pieces.

Now stitch the front pieces together, the top of lining piece 2 to the dress fabric piece 2. Repeat for the tops of the back pieces.

For the right side seam, stitch the lining side seam and the dress fabric side seam as one continuous seam matching up underarm points, right sides together.



Sew the invisible zipper into the left bodice side seam to mark. See the "Helpful Hint" on next page. Stitch little bit of seam under the bottom of the zipper notch.

Sew left side seam edges of the lining pieces to the zipper edges. Flip lining to inside of bodice.

Now, stitch bodice right sides together to corresponding skirt pieces. Make sure to match up side seams.

Stitch long edges of strap pieces right sides together. Turn so right side is out and press. Stitch to top edges of bodice.

Hem skirt and lining.



These special zippers come in various lengths. The zipper should be at least 2 cm (3/4 in) longer than the slit. It is sewn in place before the seam below the slit is stitched. A special presser foot is required to sew the zipper in place.

Sewing the zipper in place:

Open the zipper and push the coil back with your thumbnail to reveal the seam marking between the tape and the coil. Place the open zipper right side down on the right fabric side of one slit edge.

In order to stitch the zipper in place exactly along the marked seam line, you must first calculate the distance between the tape edge and the fabric edge as follows: width of seam allowance minus 1 cm (3/8 in) tape width = distance from edge of fabric. This will yield a value of 5 mm (3/16 in) if the width of the seam allowance is 1.5 cm (5/8 in).

Pin the top end of the zipper tape in place, the calculated distance from the edge of the fabric. The bottom end of the zipper will extend past the marked end of the slit. Place the presser foot on the zipper so that the coil is in the notch to the right of the needle (1). Stitch zipper in place, from the top to the marked end of the slit. Close zipper.

Place the other zipper tape face down on the opposite slit edge and pin in place at the top. Open zipper again. Place the presser foot on the top end of the zipper so that the coil is in the notch to the left of the needle (2). Sew the zipper in place, from the top to the end of the slit. Close zipper.

Now stitch the seam below the zipper, from bottom to top. Turn the loose lower end of the zipper out of the way, over the seam allowance. Stitch as close as possible to the last stitches of the zipper seams. Trim away excess zipper and bind the end with a scrap of fabric.