

### 133 Dress

Burda sizes 36, 38, 40, 42, 44

Length from waist 62 cm (24 1/2 ins)

### Materials

Wool crêpe,  
width: 150 cm (59 ins)  
length: 1.85 – 1.85 – 1.90 – 1.90 – 1.90 m (2 1/8 yds).

Duchesse as contrasting fabric,  
width: 150 cm (59 ins)  
length: 0.60 – 0.60 – 0.65 – 0.65 – 0.65 m  
(3/4 – 3/4 – 7/8 – 7/8 – 7/8 yd).

Interfacing.

2 invisible zips, 22 cm (9 ins) long.

2 large sew-on snap fasteners and 1 purchased belt.

Recommended fabrics: Dress fabrics of wool or blends. Duchesse as contrasting fabric.

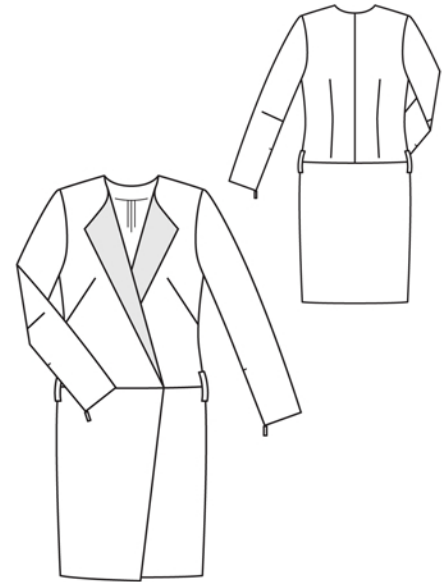
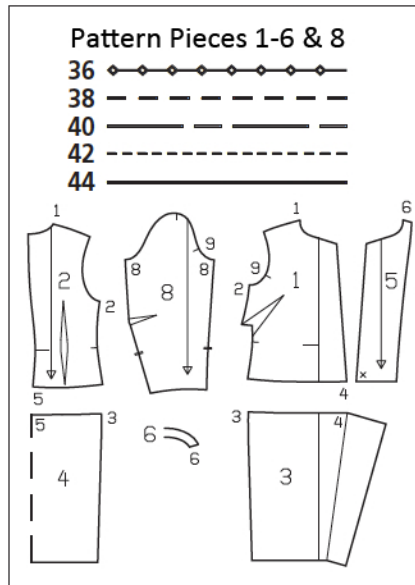
### Preparations

Print the pattern out on letter or A4 sized paper. It is **very important** to not scale or fit any of the pages, you must print the document in **actual size**. Your pattern will print on multiple pages, which you will then tile together. Arrange the sheets on a large, hard and flat surface matching up the numbers and letters (i.e. 6A to 6A). Cut or fold one of the sides and match the edge to it's corresponding side. Then, tape down in place so paper is secure.

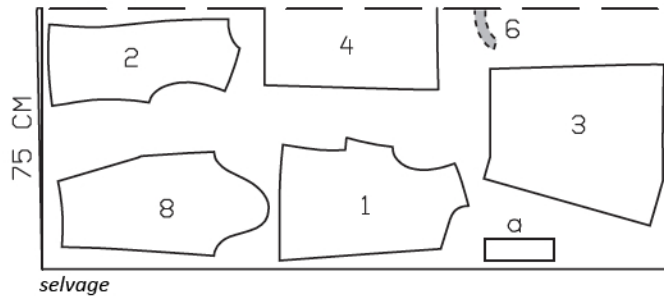
Trace the pattern pieces from the pattern sheet following the lines and markings for the correct size and the correct style (133). This pattern also includes pattern pieces, lines and markings for style 131 & 132 that should be ignored.

**burda style magazine patterns do not have seam allowance included.**

Seams and edges 1.5 cm (5/8 in), hem and sleeve hems 4 cm (1 5/8 ins) (flare sleeve hem allowance).

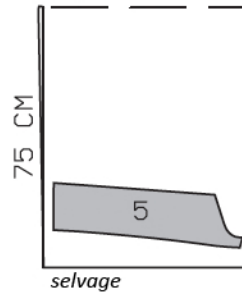


Wool Crêpe, 150cm wide  
*fabric fold*



Cut from a double layer of fabric, right side facing in.

Duchesse,  
150cm wide  
*fabric fold*



### Cutting Out

Wool crêpe:

- 1 front 2x
- 2 back 2x
- 3 front skirt panel 2x
- 4 back skirt panel, on a fold 1x
- 6 back facing, on a fold 1x
- 8 sleeve 2x

Draft the following piece NOT included in the pattern:

- a) strip for 2 belt carriers, 20 cm (8 ins) long, 6 cm (2 3/8 ins) (incl. allowances).

Duchesse (contrasting fabric):

- 5 front facing 2x

Interfacing: See shaded area on pattern layout.

## Sewing

Stitch bust darts. Trim dart allowances to 1 cm (3/8 in) wide and press open, pressing points of darts flat. On bodice, stitch centre back seam and back darts. Press seam open and press darts toward centre. Stitch side seams and shoulder seams of bodice. Stitch shoulder seams of facing.

Pin facing right sides together with bodice fronts and back. Stitch along front and neck edges. Trim seam allowances, trimming corners diagonally. On front edges, turn facings forward and press seams open, approx. 10 cm (4 ins) long, beginning at lower edge. Do not yet turn facings to inside.

Stitch side seams of skirt. Stitch skirt to bodice. Press seam allowances open. Turn facings to inside and press edges. Stitch darts in sleeves. Press darts up. Sew invisible zip to slit edges of each sleeve, from hem line to slit mark, see "Helpful Hint" on next page. Stitch sleeve seams from upper edges to slit marks. Press sleeve hem allowances to inside and sew in place by hand. At upper end of each slit, trim away extending zip tapes and bind with a scrap of fabric.

Set in sleeves.

At hem edge, lay front facings on skirt again, with right sides together, and stitch in place along hem line. Turn facings to inside. Press hem allowance to inside and sew in place by hand. Sew inside facing edge to hem allowance and to seams. Fold strip for belt carriers lengthwise, right side facing in. Stitch 1.5 cm (5/8 in) from fold edge. Turn right side out. Cut into 2 pieces. Lay belt carriers over skirt attachment seam, at side seams. Turn ends of belt carriers under and sew in place.

Sew top half of snap fastener to wrong side of right front as marked, not exiting needle on right fabric side. Lay right front on left front, matching centre fronts. Mark placement of bottom half of snap on left front. Sew bottom half of snap in place as marked. Fasten front edge of left front to skirt attachment seam, with a snap fastener.

