

111 Waistcoat

Burda sizes 72, 76, 80, 84, 88

Back length approx. 60 cm (24 ins)

Materials

Wool crêpe,
width: 150 cm (59 ins)
length: 0.85 m (1 yd) for all sizes.

Duchesse, as contrasting fabric
width: 150 cm (59 ins)
length: 0.85 m (1 yd).

Lining,
width: 140 cm (55 ins)
length: 0.75 m (7/8 yd).

Interfacing.

Vilene Bias Tape/stay tape.

Hook-and-eye fastener.

Recommended fabrics: Wools or blends, combined with duchesse.

Preparations

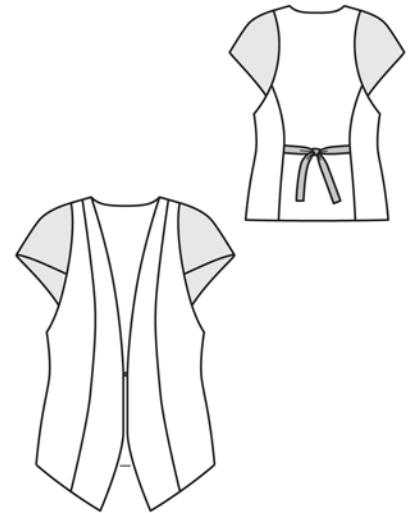
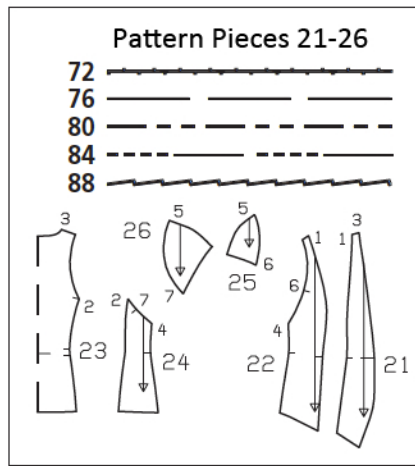
Print the pattern out on letter or A4 sized paper. It is very important to not scale or fit any of the pages, you must print the document in actual size. Your pattern will print on multiple pages, which you will then tile together. Arrange the sheets on a large, hard and flat surface matching up the numbers and letters (i.e. 6A to 6A). Cut or fold one of the sides and match the edge to it's corresponding side. Then, tape down in place so paper is secure.

Trace the pattern pieces from the pattern sheet following the lines and markings for the correct size and the correct style (111). This pattern also includes pattern pieces, lines and markings for style 110 that should be ignored. Trace piece 21 twice from the pattern sheet – once for centre front and once for front facing.

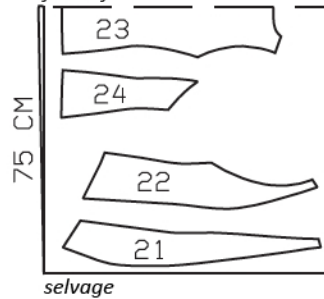
burda style magazine patterns do not have seam allowance included.

Seam and hem allowance to be added:

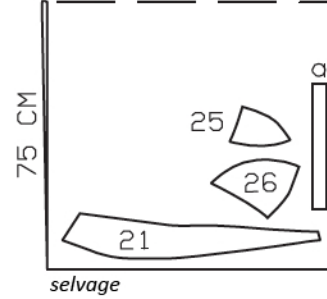
Seams and edges 1.5 cm (5/8 in), hem 4 cm (15/8 ins), facing 1.5 cm (5/8 in), lining 1.5 cm (5/8 in).



Wool crêpe, 150cm wide
fabric fold



Duchesse, 150cm wide
fabric fold



Cut from a double layer of fabric, right side facing in.

Cutting Out

Wool crêpe:

- 21 centre front 2x
- 22 side front 2x
- 23 centre back, on a fold 1x
- 24 side back 2x

Duchesse:

- 21 front facing 2x
- 25 sleeve front 2x
- 26 sleeve back 2x

Draft the following piece NOT included in the pattern:

- a) 2 tie bands, 35 cm (13 3/4 ins) long, 4 cm (1 1/2 ins) wide, finished width 2 cm (3/4 in).

Lining: pieces 22 to 26.

Interfacing: Iron Vilene Bias Tape/stay tape to wrong side of neck and armhole edges. Iron interfacing (G 785) to wrong side of hem allowances.

Sewing

Fold each tie band lengthwise, right side facing in. Stitch along long edge and one narrow end. Trim seam allowances. Turn tie bands right side out and press. Baste tie bands to section seam edges of centre back, between seam marks.

Stitch section seams and shoulder seams. Press seam allowances open. Press hem allowance to inside, then turn down again.

Stitch top sleeve seams on waistcoat and on lining. Lay each sleeve lining on sleeve, right sides facing, and stitch lower edges together. Turn sleeve linings down and stitch to seam allowances, close to seam. Turn sleeve linings to inside. Baste edges of sleeves and lining together. Stitch sleeves to armhole edges, from seam number 6 to seam number 7.

Stitch side front lining pieces to front facings. Stitch back section seams and shoulder seams. Lay lining with facings on waistcoat, right sides together, and pin to edges. Turn hem allowance to outside and stitch to lower facing edge, right sides together, stitching approx. 8 cm (3 1/4 ins) long, beginning at front edges. On front edges, lay extra length of facing down under hem allowance. Pin hem allowance to front edges. Stitch along front and neck edges. Below sleeves, stitch lining to armhole edges, right sides facing. Trim seam allowances, trimming corners diagonally. Turn waistcoat right side out. Press edges. Press seam allowances of sleeve attachment seams away from sleeves. At sleeve attachment seams, turn lining edges under and sew in place by hand.

Lay fronts right sides together with back and turn lining up. Stitch side seams as continuous seams. Press seam allowances open. Turn lining down again.

Turn hem allowance to inside and sew in place by hand. Turn lining edge under and sew to hem allowance by hand. Lay extra length of lining down and press.

Sew hook and eye under front edges, at waist level.

