

126 Skirt

Size 34, 36, 38, 40, 42, 44

Length from waist 109 cm (43 ins)
(waistband centre = waist)

Materials

Duchesse,
width: 150 cm (59 ins)
length: 2.20 – 2.30 – 2.40 – 2.40 – 2.40 – 2.40 m
(2 1/2 – 2 5/8 – 2 5/8 – 2 5/8 – 2 5/8 – 2 5/8 yds).

Lining,
width: 140 cm (55 ins)
length: 1.40 m (1 5/8 yds) for all sizes.

Interfacing.

1 invisible zip, 22 cm (9 ins) long.

1 button.

Recommended fabrics: Lightweight skirt fabrics with some body

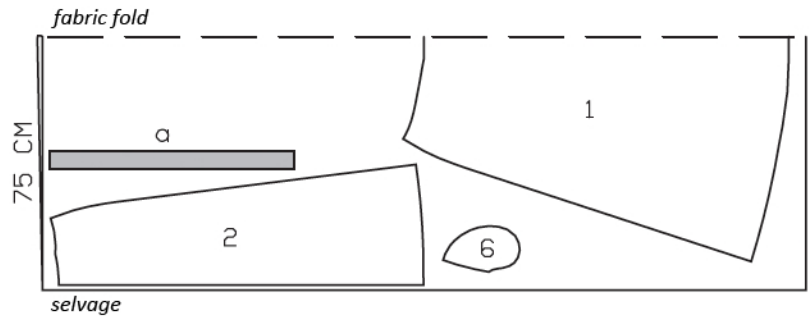
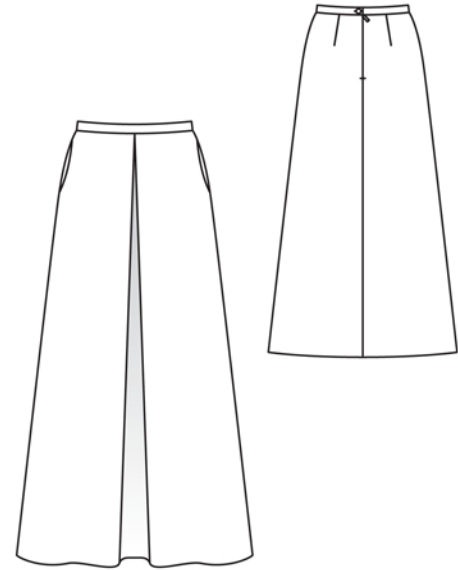
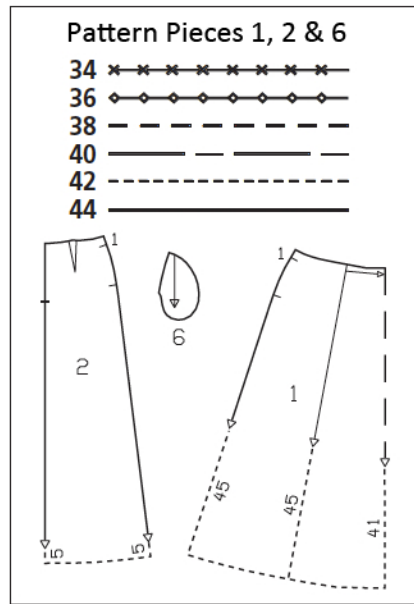
Preparations

Print the pattern out on letter or A4 sized paper. It is **very important** to not scale or fit any of the pages, you must print the document in **actual size**. Your pattern will print on multiple pages, which you will then tile together. Arrange the sheets on a large, hard and flat surface matching up the numbers and letters (i.e. 6A to 6A). Cut or fold one of the sides and match the edge to it's corresponding side. Then, tape down in place so paper is secure.

Trace the pattern pieces from the pattern sheet following the lines and markings for the correct size and the correct style (126). This pattern also includes pattern pieces, lines and markings for style 123, 124 & 126 that should be ignored.

burda style magazine patterns do not have seam allowance included.

Seam and hem allowance to be added:
Seams and edges 1.5 cm (5/8 in), hem 4 cm (1 5/8 ins), lining 1.5 cm (5/8 in).



Cut from a double layer of fabric, right side facing in.

Cutting Out

Duchesse:

- 1 front skirt panel, on a fold 1x
- 2 back skirt panel 2x
- 6 pocket piece 2x

Draft the following piece NOT included in the pattern:

- a) waistband, with 2 cm (3/4 in) underlap, 68 – 72 – 76 – 80 – 84 – 88 cm (26 3/4 – 28 1/2 – 30 – 31 1/2 – 33 – 34 3/4 ins) long, 5 cm (2 ins) wide, finished width 2.5 cm (1 in).

Lining: piece 1 without pleat, pieces 2 and 6.

Interfacing: Iron to wrong side of skirt waistband.

Sewing

Stitch back darts and press toward centre. Sew invisible zip to back opening edges, see "Helpful Hint" on next page. Stitch centre back seam from lower edge to zip. Press seam open.

Fold pleat in skirt front in direction of arrows and baste to upper edge. Do not press pleat folds.

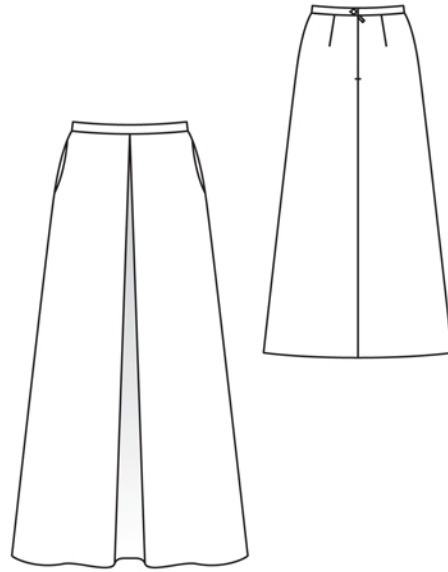
Stitch side seams, not stitching across pocket openings.

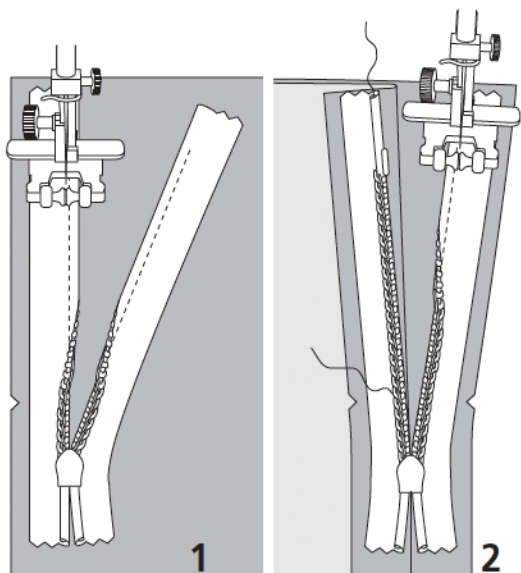
Inseam pockets: Pin pocket pieces right sides together with seam allowances of pocket opening edges – pocket lining pieces in front and pocket pieces of skirt fabric in back. Stitch pocket pieces in place, directly along marked seam lines. Press pocket pieces forward and stitch together.

Stitch darts and seams of lining, leaving side slits open approx. 55 cm (22 ins) long. Pull lining into skirt, with wrong sides facing. Turn lining edges under and sew to zip tapes. Baste lining to upper skirt edge, without turning in.

Stitch waistband to upper skirt edge, leaving underlap extending at right back slit edge. Press allowances of attachment seam and of other long edge onto waistband. Fold waistband lengthwise and stitch across ends. Turn right side out. Baste inside waistband edge to attachment seam and baste underlap edges together. Work from outside of skirt to stitch along waistband attachment seam. Sew open underlap edges closed. Work buttonhole in left back waistband end.

Press hem allowance to inside and sew in place by hand. Hem lining so that it is approx. 2 cm (3/4 in) shorter than skirt. Press allowances of side slits to inside and stitch in place.





These special zippers come in various lengths. The zipper should be at least 2 cm (3/4 in) longer than the slit. It is sewn in place before the seam below the slit is stitched. A special presser foot is required to sew the zipper in place.

Sewing the zipper in place:

Open the zipper and push the coil back with your thumbnail to reveal the seam marking between the tape and the coil. Place the open zipper right side down on the right fabric side of one slit edge.

In order to stitch the zipper in place exactly along the marked seam line, you must first calculate the distance between the tape edge and the fabric edge as follows: width of seam allowance minus 1 cm (3/8 in) tape width = distance from edge of fabric. This will yield a value of 5 mm (3/16 in) if the width of the seam allowance is 1.5 cm (5/8 in).

Pin the top end of the zipper tape in place, the calculated distance from the edge of the fabric. The bottom end of the zipper will extend past the marked end of the slit. Place the presser foot on the zipper so that the coil is in the notch to the right of the needle (1). Stitch zipper in place, from the top to the marked end of the slit. Close zipper.

Place the other zipper tape face down on the opposite slit edge and pin in place at the top. Open zipper again. Place the presser foot on the top end of the zipper so that the coil is in the notch to the left of the needle (2). Sew the zipper in place, from the top to the end of the slit. Close zipper.

Now stitch the seam below the zipper, from bottom to top. Turn the loose lower end of the zipper out of the way, over the seam allowance. Stitch as close as possible to the last stitches of the zipper seams. Trim away excess zipper and bind the end with a scrap of fabric.