

106 Skirt

Burda sizes **34, 36, 38, 40, 42, 44**
 Skirt length 74 cm (29 1/4 ins)

Materials

Stretch jersey with woven texture,
 width: 130 cm (51 ins)
 length: 2.90 – 2.90 – 2.95 – 3.00 – 3.00 – 3.05 m
 (3 1/4 – 3 1/4 – 3 3/8 – 3 3/8 – 3 3/8 yds).

Vilene Bias Tape/ stay tape.

1 invisible zip, 22 cm (9 ins) long.

Petersham ribbon,
 width: 2.5 cm (1 in) wide (as waistband)
 length: 1.45 – 1.55 – 1.60 – 1.70 – 1.80 – 1.85 m
 (1 3/4 – 1 3/4 – 1 3/4 – 1 7/8 – 2 – 2 1/8 yds).

1 large sew-on snap fastener.

Recommended fabrics: Softly draping skirt fabrics.

Preparations

On a large sheet of wrapping paper – the upper edge and the right edge must form a right angle – stretch a thread from the upper right corner to mark the radius (R) for the upper edge of the skirt panel. Also mark the radius (R1) for the hem edge. Or measure the length of the skirt panel down from the upper edge at several points and then connect the points in an even curve to mark the hem edge.

Add seam and hem allowances:
 Seams and edges 1.5 cm (5/8 in), hem 3 cm (1 1/4 ins).

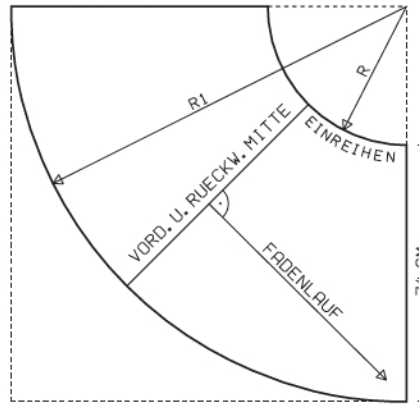
Cutting Out

a) skirt panel 2x, according to diagram.

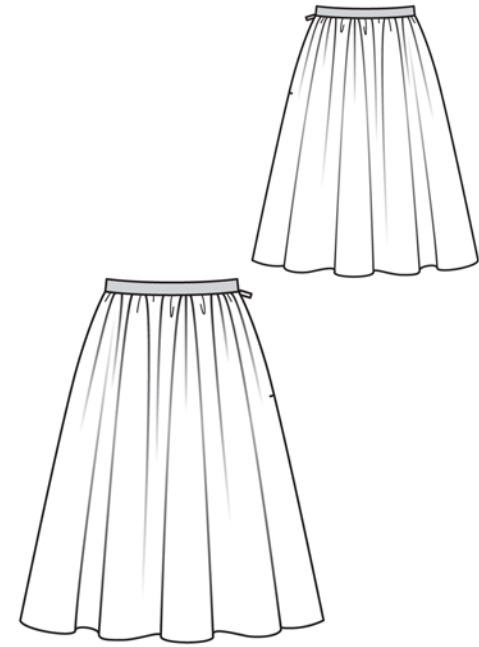
Sewing

For the zip, measure and mark 20 cm (8 ins) below upper edge on left skirt edges. Iron Vilene Bias Tape/stay tape to edges of zip slit. Sew invisible zip to slit edges, below marked upper skirt edge, see the “Helpful Hint” on next page. Stitch left side seam from lower edge to zip. Stitch right side seam. Press seam allowances open.

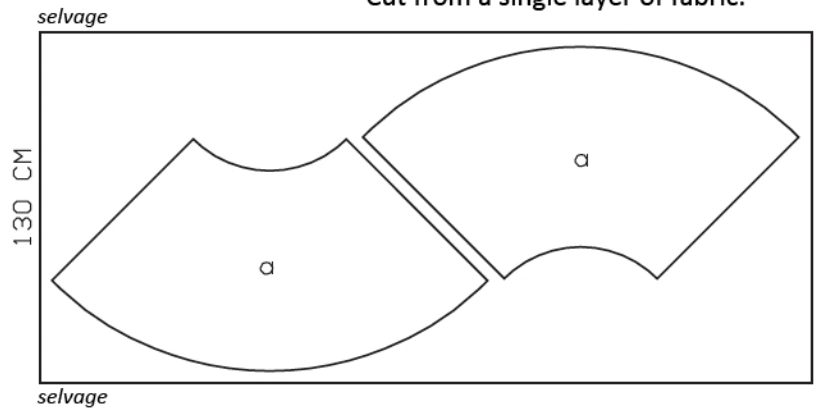
Diagram - Skirt Panel



Radius for upper edge (R)
 size 34: 38.7 cm, size 36: 40.0 cm
 size 38: 41.3 cm, size 40: 42.5 cm
 size 42: 43.8 cm, size 44: 45.0 cm
 Radius for hem line (R1)
 size 34: 112.7 cm, size 36: 114.0 cm
 size 38: 115.3 cm, size 40: 116.5 cm
 size 42: 117.8 cm, size 44: 119.0 cm



Cut from a single layer of fabric.



Gather upper skirt edge to 68 – 72 – 76 – 80 – 84 – 88 cm (26 3/4 – 28 1/2 – 30 – 31 1/2 – 33 – 34 3/4 ins). Turn one end of petersham ribbon under, 1 cm (3/8 in) wide, and press. Measure and mark 71 – 75 – 79 – 83 – 87 – 91 cm (28 – 29 3/4 – 31 1/4 – 32 3/4 – 34 1/4 ins) from this end. Lay ribbon on seam allowance on inside upper edge of skirt so that pressed-under end extends 3 cm (1 1/4 ins) paste back slit edge and marking meets front slit edge. Edgestitch lower edge of ribbon in place. Fold ribbon to outside, over front slit edge. Pin ribbon edges together, catching seam allowance of skirt. Turn ribbon end under. Edgestitch ribbon edges together. Fasten waistband with one snap.

Press hem allowance to inside and sew in place by hand.