

101 Dress

Burda sizes 34, 36, 38, 40, 42

Length from waist 55 cm (21 3/4 ins)
(measured at centre front)

Materials

Print chiffon,
width: 145 cm (57 ins)
length: 2.00 – 2.00 – 2.15 – 2.20 – 2.30 m
(2 1/4 – 2 1/4 – 2 1/2 – 2 1/2 – 2 5/8 yds).

Plain chiffon, for lining
width: 145 cm (57 ins)
length: 1.30 – 1.35 – 1.40 – 1.45 – 1.50 m
(1 1/2 – 1 5/8 – 1 5/8 – 1 3/4 – 1 3/4 yds).

Sequin fabric as contrasting fabric,
width: 125 cm (49 ins)
length: 0.15 – 0.15 – 0.30 – 0.30 – 0.30 m
(1/4 – 1/4 – 3/8 – 3/8 – 3/8 yd).

Interfacing.

Recommended fabrics: Lightweight, softly draping dress fabrics. Sequin fabric as contrasting fabric.

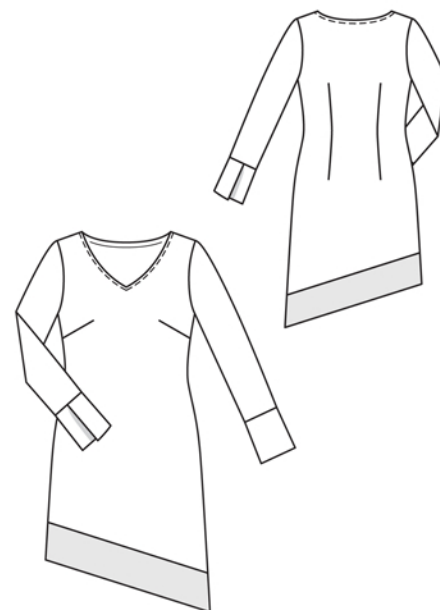
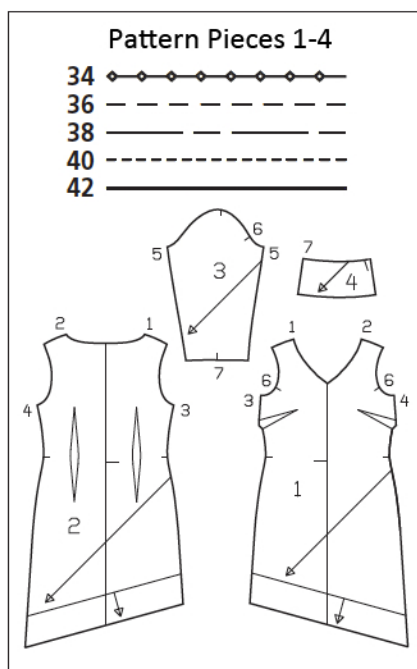
Preparations

Print the pattern out on letter or A4 sized paper. It is **very important** to not scale or fit any of the pages, you must print the document in **actual size**. Your pattern will print on multiple pages, which you will then tile together. Arrange the sheets on a large, hard and flat surface matching up the numbers and letters (i.e. 6A to 6A). Cut or fold one of the sides and match the edge to it's corresponding side. Then, tape down in place so paper is secure.

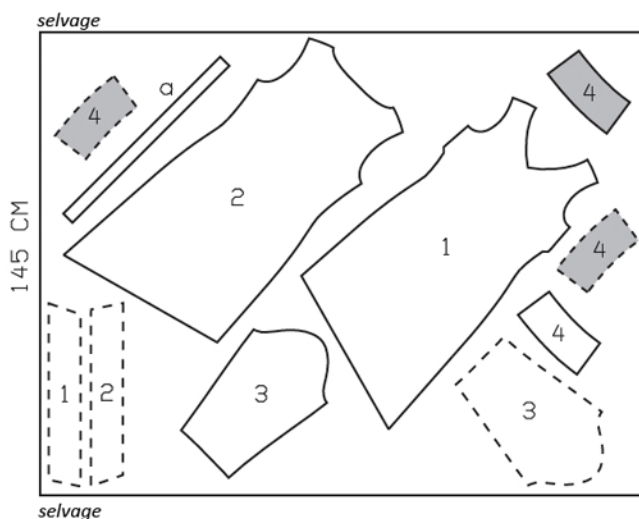
Trace the pattern pieces from the pattern sheet following the lines and markings for your size. Cut pieces 1 and 2 apart on the marked band joining line = front and front hem band, back and back hem band.

burda style magazine patterns do not have seam allowance included.

Seam and hem allowance to be added:
Seams and edges 1.5 cm (5/8 in).

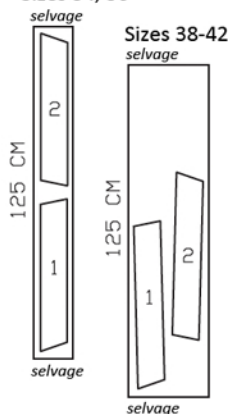


Print Chiffon, 145cm wide
Sizes 34-42

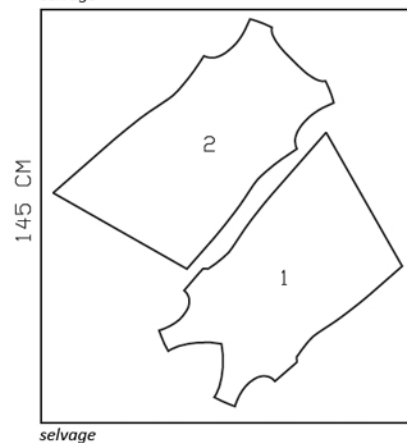


Cut from a single layer of fabric, right side facing up. Pieces shown with a broken outline are to be placed on the fabric, printed side facing down.

Sequin Fabric,
125cm wide
Sizes 34, 36



Plain Chiffon (lining), 145cm wide
selvage



Cutting Out

Print chiffon:

- 1 front 1x
- front hem band (inside) 1x
- 2 back 1x
- back hem band (inside) 1x
- 3 sleeve 2x
- 4 cuff 4x

Draft the following pieces NOT included in the pattern:

a) bias strip for neck edge, 68 – 70 – 71 – 73 – 75 cm (26 3/4 – 27 3/4 – 28 – 28 3/4 – 29 3/4 yds) long, 4 cm (1 5/8 ins) wide (incl. allowances).

Sequin fabric (contrasting fabric):

- 1 front hem band 1x
- 2 back hem band 1x
- Plain chiffon (lining): pieces 1 and 2 without hem band.

Interfacing: See shaded area on pattern layout.

Sewing

Stitch darts. Press bust darts down. Press back darts toward centre back.

Stitch side seams and shoulder seams. Trim seam allowances to 7 mm (1/4 in) wide, neaten together and press onto back.

Stitch darts and seams of lining. Neaten lower lining edge.

Place lining inside dress, with right side facing wrong side, and baste to neck and armhole edges.

Neck edge: Fold bias strip lengthwise, right side facing out, and press. Turn one end of folded bias strip under, 1 cm (3/8 in) wide, and pin to neck edge, from one shoulder seam to centre front, so that fold edge of strip lies on garment piece, 1 cm (3/8 in) past seam line. Stitch bias strip in place. Then pin strip to remainder of neck edge, making a small fold at centre front. Lay open end of strip over turned-under end, at shoulder seam. Stitch. Trim seam allowances and clip allowances at centre front, close to line



of stitching. Turn bias strip to inside. Press neck edge. Topstitch 7 mm (1/4 in) from neck edge.

Stitch sleeve seams. Trim seam allowances, neaten together, and press to one side.

Cuffs: For each cuff, lay two cuff pieces together, right sides facing. Stitch across ends and along lower edge. Turn cuffs right side out. Lay front edge of each cuff on back edge, to placement line and baste. Stitch cuff edges together to lower sleeve edges (seam number 7). Press seam allowances of attachment seams up.

Set in sleeves.

Stitch side seams on hem bands of sequin fabric and of chiffon, beginning and ending exactly at marked seam line on lower edge. Lay hem bands right sides together. Stitch along lower edge. Turn chiffon band down and stitch to seam allowances, close to seam. Turn chiffon band to inside and baste to upper edge. Stitch open band edges together to lower dress edge, not catching lining. Press seam allowances up.