

108A Blouse

Burda sizes 36, 38, 40, 42, 44

Back length approx. 62 cm (24 1/2 ins)

3/4-sleeves, approx. 15 cm (6 ins) shorter than normal

Materials

batiste with metallic print,

width: 140 cm (55 ins)

length: 1.45 – 1.55 – 1.60 – 1.65 – 1.70 m

(1 3/4 – 1 3/4 – 1 3/4 – 1 7/8 – 1 7/8 yds).

6 small flat buttons.

Recommended fabrics: Lightweight blouse fabrics.

Preparations

Print the pattern out on letter or A4 sized paper. It is very important to not scale or fit any of the pages, you must print the document in actual size. Your pattern will print on multiple pages, which you will then tile together. Arrange the sheets on a large, hard and flat surface matching up the numbers and letters (i.e. 6A to 6A). Cut or fold one of the sides and match the edge to it's corresponding side. Then, tape down in place so paper is secure.

Trace the pattern pieces from the pattern sheet following the lines and markings for the correct size and the correct style (108A). This pattern also includes pattern pieces, lines and markings for style 109 that should be ignored.

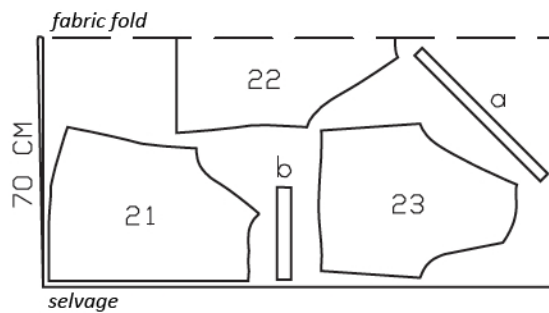
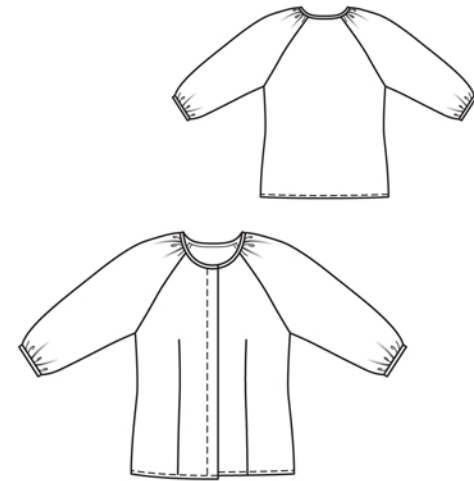
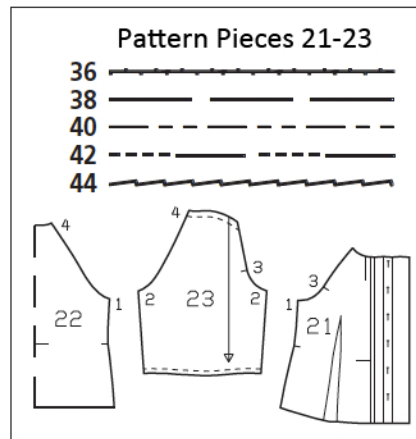
Note different lines for right and left front fastening edges but cut right and left pieces the same size initially from the double layer of fabric.

The buttonholes on piece 21 are marked for size 36. For sizes 38 – 44, Mark the top buttonhole the same distance from neck edge as for size 36. The bottom buttonhole is the same for all sizes. Space the other buttonholes evenly in between.

burda style magazine patterns do not have seam allowance included.

Seam and hem allowance to be added:

Seams and edges 1.5 cm (5/8 in), no allowance on vertical edge of front self-facing, hem 1.5 cm (5/8 in).



Cut from a double layer of fabric, right side facing in.

Cutting Out

21 front 2x
22 back, on a fold 1x
23 sleeve 2x

Draft the following pieces NOT included in the pattern:

a) bias binding strip for neck edge, 50 – 51 – 52 – 53 – 54 cm (19 3/4 – 20 1/4 – 20 1/2 – 21 – 21 1/4 ins) long, 3 cm (1 1/4 ins) wide (incl. allowances),

b) 2 binding strips for lower sleeve edges, 29 – 30 – 31 – 32 – 33 cm (11 1/2 – 12 – 12 1/4 – 12 3/4 – 13 ins) long, 4 cm (1 5/8 ins) wide (incl. allowances).

Sewing

Stitch front darts. Trim dart allowances to 1 cm (3/8 in) wide, neaten edges, and press toward centre.

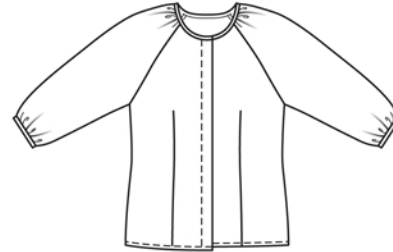
Concealed fastening: On right front, press integrated buttonhole band to inside, on marked "right fold" line, and baste in place. Work buttonholes as marked. Press entire front facing to inside, on marked "facing fold" line. Topstitch right front edge as marked. On inside, turn buttonhole band forward and press. Baste band to neck edge, next to marked seam line and on lower edge. On left front, trim self-facing to marked "left edge" line. Turn left self-facing to inside, turn under on fold line, and stitch in place.

Stitch side seams. Trim seam allowances to 7 mm (1/4 in) wide, neaten together, and press onto back. Press hem allowance to inside, turn edge under by half width, and stitch in place.

Stitch sleeve seams, leaving seam open below marked lower sleeve edge.

Bind lower sleeve edges: Trim away allowances on lower sleeve edges. Gather lower edge of each sleeve to 26 – 27 – 28 – 29 – 30 cm (10 1/4 – 10 3/4 – 11 1/8 – 11 1/2 – 12 ins). Fold binding strip in half lengthwise, right side facing out, and press. Unfold strip again. Now turn each long edge in, to the pressed fold, and press again. Unfold the pressed binding strip and stitch ends together, to match sleeve edge. Pin each binding strip to inside edge of sleeve and stitch in place, 1 cm (3/8 in) from edge, along the pressed fold. Turn binding to outside, over sleeve edge, turn raw edge under, and baste in place. Edgestitch binding in place.

Stitch sleeves to armhole edges, beginning and ending at marked neck edge. Trim seam allowances and neaten edges together. Press seam allowances toward sleeves, from neck edge to beginning of underarm curve.



On neck edge, trim away seam allowance. Gather upper edge of each sleeve to 9.5 – 9.5 – 9.5 – 10 – 10 cm (3 3/4 – 3 3/4 – 3 3/4 – 4 – 4 ins). Bind neck edge as described for lower sleeve edges – finished width of binding = 7 mm (1/4 in). Turn binding ends under at front edges and sew in place.