

110 Waistcoat

Burda tall sizes 72, 76, 80, 84, 88
 Back length approx. 55 cm (22 ins)
 (measured at centre)

Materials

Sequin fabric,
 width: 125 cm (49 ins)
 length: 0.85 – 0.90 – 0.90 – 1.05 – 1.05 m
 (1 – 1 – 1 – 1 1/4 – 1 1/4 yds).

Crêpe de chine, for lining
 width: 140 cm (55 ins)
 length: 0.80 m (7/8 yd) for all sizes.

Vilene Bias Tape/stay tape.

4 small hooks and eyes.

Recommended fabrics: Sequin fabric.

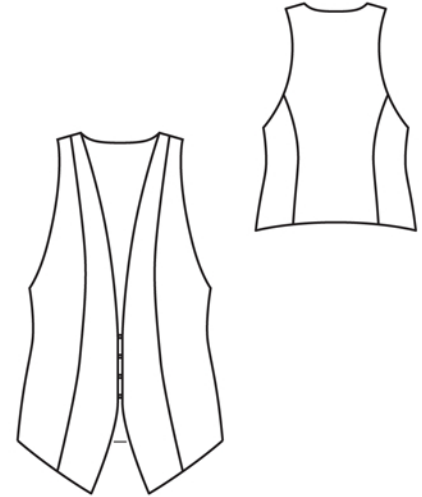
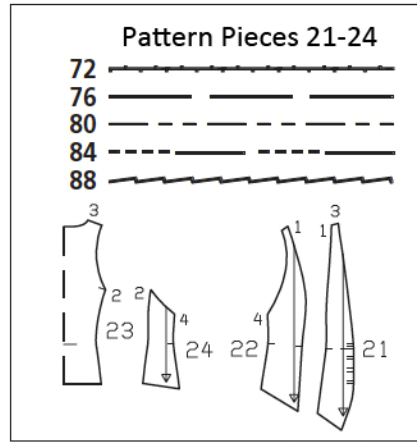
Preparations

Print the pattern out on letter or A4 sized paper. It is **very important** to not scale or fit any of the pages, you must print the document in **actual size**. Your pattern will print on multiple pages, which you will then tile together. Arrange the sheets on a large, hard and flat surface matching up the numbers and letters (i.e. 6A to 6A). Cut or fold one of the sides and match the edge to it's corresponding side. Then, tape down in place so paper is secure.

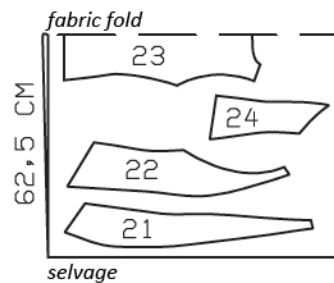
Trace the pattern pieces from the pattern sheet following the lines and markings for the correct size and the correct style (110). This pattern also includes pattern pieces, lines and markings for style 111 that should be ignored.

burda style magazine patterns do not have seam allowance included.

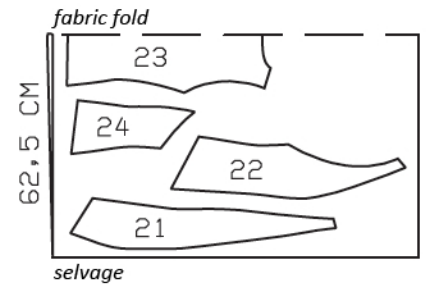
Seam and hem allowance to be added:
 Seams and edges 1.5 cm (5/8 in), hem 4 cm (1 5/8 ins), lining 1.5 cm (5/8 in).



Sizes 72-80



Sizes 84, 88



Cut from a double layer of fabric, right side facing in.

Cutting Out

Sequin fabric:

- 21 centre front 2x
- 22 side front 2x
- 23 centre back, on a fold 1x
- 24 side back 2x

Lining: pieces 21 to 24.

Vilene Bias Tape/stay tape: Iron to wrong sides of neck and armhole edges on lining pieces.

Sewing

Stitch front and back section seams and side seams. Press seam allowances open. Press hem allowance to inside, then turn down again.

On lining, stitch section seams and side seams, leaving an opening, approx. 15 cm (6 ins) long, in centre of one side seam, for turning. On lining, press shoulder seam allowances to wrong side.

Lay lining on waistcoat, right sides facing, and pin to waistcoat edges. Turn hem allowance to outside and stitch to lower lining edge. On front edges, lay extra length of lining down, under hem allowance. Pin hem allowance to front edges. Stitch along front edges, neck edge and armhole edges, on front edges, leaving openings for hook and eye between seam marks. Trim seam allowances, trimming corners diagonally. Turn waistcoat right side out through opening in lining seam. Baste hem edge in place. Pull lower waistcoat edge out through opening in seam. Sew hem allowance in place by hand. Push hem edge in place again. Press faced edges. On right front edge, slide hook out through small seam opening; on left front edge, slide eye through opening. Sew ends of hook and eye to inside of fronts. Sew opening in side seam of lining closed.

Stitch shoulder seams, not catching lining. Press seam allowances open and slide allowances under edges of lining. Sew shoulder edges of lining closed by hand.

