

112 Tunic

Burda sizes 36, 38, 40, 42, 44

Back length approx. 87 cm (34 ins)

3/4-sleeves, approx. 12 cm (5 ins) shorter than normal

Materials

Silk satin,
width: 135 cm (53 ins) wide, with a pattern repeat of approx. 75 cm (30 ins)
length: 3.00 m (3 3/8 yds) for all sizes.

Or: Fabric without pattern repeat, 140 cm (55 ins) wide and 2.00 m (2 1/4 yds) long.

Interfacing.

1 fabric-covered button.

Recommended fabrics: Lightweight silks.

Preparations

Print the pattern out on letter or A4 sized paper. It is **very important** to not scale or fit any of the pages, you must print the document in **actual size**. Your pattern will print on multiple pages, which you will then tile together. Arrange the sheets on a large, hard and flat surface matching up the numbers and letters (i.e. 6A to 6A). Cut or fold one of the sides and match the edge to it's corresponding side. Then, tape down in place so paper is secure.

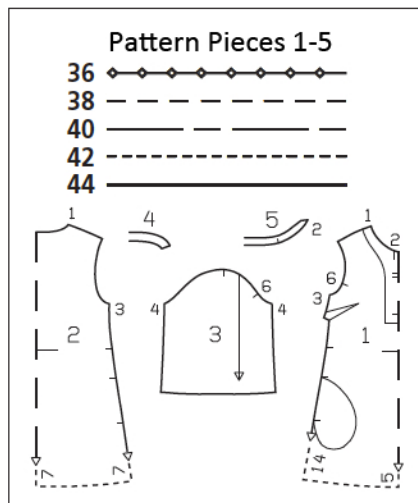
Trace the pattern pieces from the pattern sheet following the lines and markings for the correct size and the correct style (112). This pattern also includes pattern pieces, lines and markings for style 113 that should be ignored.

Trace the front facing and pocket piece from piece 1 each as a separate pattern piece. The pocket piece is the same for all sizes. The marking for the loop on piece 1 is for size 36. For the other sizes, move the marking up according to the marked neck edge.

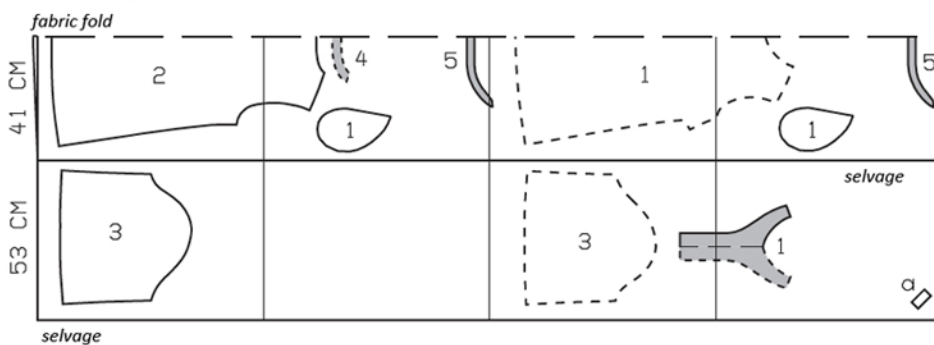
burda style magazine patterns do not have seam allowance included.

Seam and hem allowance to be added:

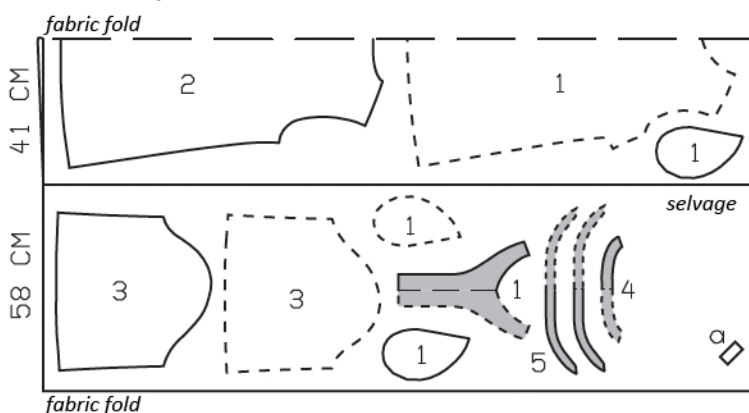
Seams and edges 1.5 cm (5/8 in), hem and sleeve hems 4 cm (1 5/8 ins).



Fabric Repeat, 135cm wide



Fabric Repeat, 140cm wide



Fold the fabric as shown in the pattern layout. Right side faces in on a double layer of fabric; right side faces up on a single layer of fabric. Cut right and left sleeves as opposites.

Note pattern repeats.

Cutting Out

- 1 front, on a fold 1x
- front facing, on a fold 1x
- pocket piece 4x
- 2 back, on a fold 1x
- 3 sleeve 2x
- 4 back facing, on a fold 1x
- 5 standing collar, on a fold 2x

Draft the following piece NOT included in the pattern:

- a) bias strip for 1 loop, 6 cm (2 3/8 ins) long, 2 cm (3/4 in) wide (incl. allowances).

Interfacing: See shaded area on pattern layout.

Sewing

Stitch bust darts. Press darts down.

Hand baste along marked slit at centre front. Pin front facing right sides together with front, over slit mark. Work from wrong side to stitch around slit mark, beginning at seam mark on neck edge and tapering stitching to a "V" at bottom of slit. On right slit edge, leave seam open between seam marks, for loop. Slash slit open between lines of stitching and close to seam at bottom.

With the bias strip for the loop, sew as narrow a fabric tube as possible. On right slit edge, lay loop between front and facing, slide ends through opening, and pin to slit edge. The size of loop must match size of your button. Sew seam opening closed. Leave facing lying right sides together with front for the time being.

Stitch shoulder seams. Trim seam allowances to 7 mm (1/4 in) wide, neaten edges together, and press onto back. Stitch back facing to shoulder edges of front facings.

Stitch collar pieces together along outer edges, right sides facing. Trim seam allowances. Turn collar right side out and press. Baste collar edges together to neck edge. Stitch facing to neck edge, over collar. Turn facing to inside and press slit edges, turning loop forward. Sew facing to shoulder seams.



Stitch side seams, not stitching across pocket openings. Press seam allowances open.

Inseam pockets: Pin pocket pieces right sides together with seam allowances of pocket opening edges and stitch in place directly along marked seams lines. Press pocket pieces forward and stitch together.

Stitch sleeve seams. Press sleeve hem allowances to inside and sew in place by hand.

Set in sleeves.

Press hem allowance to inside and sew in place by hand.

Sew button to left front slit edge, to match loop.