

105 Dress

Burda sizes 36, 38, 40, 42, 44

Length from waist 59 cm (23 1/4 ins)
(pushed up 10 cm / 4 ins)

Materials

Batiste,
width: 135 cm (53 ins)
length: 3.10 – 3.10 – 3.25 – 3.25 – 3.25 m
(3 1/2 – 3 1/2 – 3 5/8 – 3 5/8 – 3 5/8 yds).

Elastic,
width: 5 mm (3/16 in)
length: 0.90 – 0.95 – 0.95 – 1.00 – 1.05 m
(1 – 1 1/8 – 1 1/8 – 1 1/8 – 1 1/4 yds).

Recommended fabrics: Lightweight dress fabrics.
Use only fabrics with two "good" sides.

Preparations

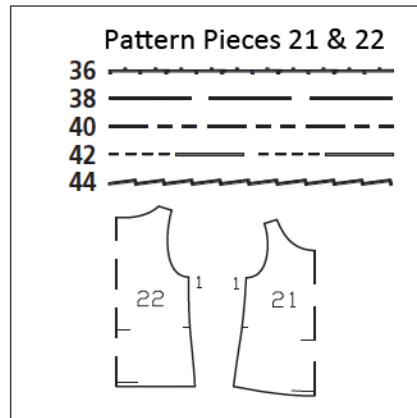
Print the pattern out on letter or A4 sized paper. It is **very** important to not scale or fit any of the pages, you must print the document in **actual size**. Your pattern will print on multiple pages, which you will then tile together. Arrange the sheets on a large, hard and flat surface matching up the numbers and letters (i.e. 6A to 6A). Cut or fold one of the sides and match the edge to it's corresponding side. Then, tape down in place so paper is secure.

Trace the pattern pieces from the pattern sheet following the lines and markings for the correct size and the correct style (105). This pattern also includes pattern pieces, lines and markings for style 104 that should be ignored.

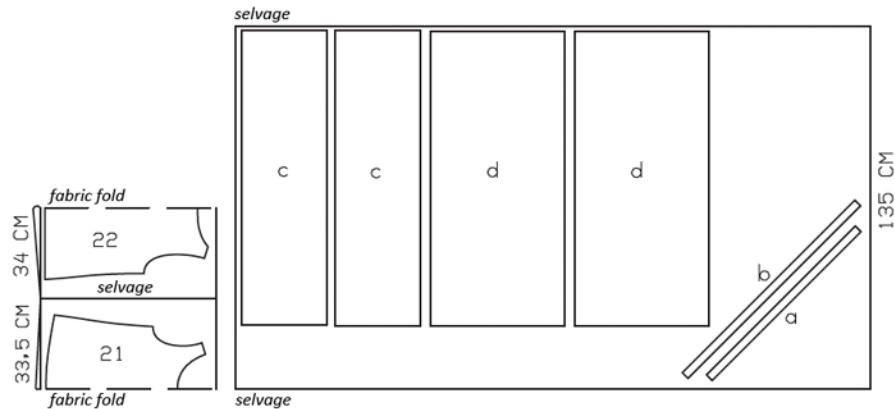
Trace the pocket piece from piece 21 as a separate pattern piece.

burda style magazine patterns do not have seam allowance included.

Seam and hem allowance to be added:
Seams, edges and hem 1.5 cm (5/8 in).



Right side faces in on a double layer of fabric; right side faces up on a single layer of fabric.



Cutting Out

21 front, on a fold 1x
22 back, on a fold 1x

Draft the following pieces NOT included in the pattern:

- a) bias strip (for front armhole edges and back neck edge), 79 – 81 – 83 – 85 – 87 cm (31 1/4 – 32 – 32 3/4 – 33 1/2 – 34 1/4 ins) long, 3 cm (1 1/4 ins) (incl. allowances),
- b) bias strip (back armhole edges and front neck edge), 91 – 94 – 97 – 100 – 103 cm (36 – 37 – 38 1/4 – 39 1/2 – 40 3/4 ins) long, 3 cm (1 1/4 ins) wide (incl. allowances),
- c) 2 upper skirt panels, 115 cm (45 1/4 ins) wide, 32 cm (12 3/4 ins) long,
- d) 2 lower skirt panels, 115 cm (45 1/4 ins) wide, 50 cm (19 3/4 ins) long.

Sewing

Lay front piece on back piece, wrong sides facing. Twist each front shoulder edge toward centre so that front shoulder edge lies on back shoulder edge, with right side facing wrong side, and front armhole edge meets back neck edge. Stitch the 1.5 cm (5/8 in) wide shoulder seam allowances together, 7 mm (1/4 in) from edge. Press seam allowances open. Now fold along each seam so that seam allowances lie inside. Stitch 8 mm (a generous 1/4 in) from seamed (fold edge). Press seam allowances onto back.

Front armholes and back neck edge: Fold bias strip in half lengthwise, right side facing out, and press. Stitch folded bias strip to armhole and neck edge so that fold edge of strip lies on garment piece, 7 mm (1/4 in) past seam line. Trim seam allowances. Turn bias strip to inside. Press edge. Topstitch 5 mm (3/16 in) from edge.

In same manner, face back armhole edges and front neck edge with the folded bias strip and topstitch.

Stitch side seams. Trim seam allowances to 7 mm (1/4 in) wide, neaten together, and press onto back. Sew upper ends of seam allowances in place.

Stitch side seams of upper and lower skirt tiers. Hem lower edge of each skirt tier narrowly. Lay upper skirt tier on lower skirt tier, with wrong side facing right side, matching side seams. Pin upper edges together. Gather upper skirt edges to match lower edge of bodice. Stitch skirt to bodice. Neaten seam allowances together. Press up and stitch as marked, to form casing, leaving a section of seam open for elastic. Pull elastic into casing. Sew ends of elastic together to a circumference of 84 – 88 – 92 – 96 – 100 cm (33 – 34 3/4 – 36 1/4 – 37 3/4 – 39 1/2 ins). Sew seam opening closed.

