

142 Tunic

Burda sizes 44, 46, 48, 50, 52

Back length approx. 87 cm (34 ins)

Materials

Jacquard,
width: 140 cm (55 ins)
length: 1.70 – 1.75 – 2.10 – 2.10 – 2.10 m
(1 7/8 – 2 – 2 3/8 – 2 3/8 – 2 3/8 yds).

Satin, as contrasting fabric
width: 140 cm (55 ins)
length: 0.40 m (1/2 yd) for all sizes.

Satin piping: 1.80 – 1.85 – 2.00 – 2.10 – 2.10 m (2 – 2 1/8 – 2 1/4 – 2 3/8 – 2 3/8 yds) long.

Interfacing.

1 invisible zip, 40 cm (15 ins) long.

A piece of lining fabric.

Recommended fabrics: Lightweight fabrics with some body.

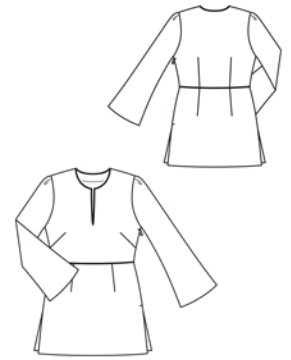
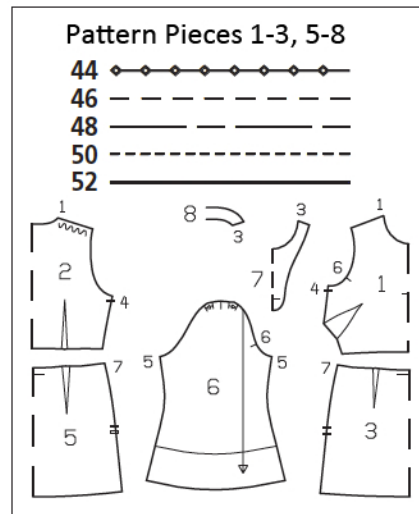
Preparations

Print the pattern out on letter or A4 sized paper. It is **very important** to not scale or fit any of the pages, you must print the document in **actual size**. Your pattern will print on multiple pages, which you will then tile together. Arrange the sheets on a large, hard and flat surface matching up the numbers and letters (i.e. 6A to 6A). Cut or fold one of the sides and match the edge to it's corresponding side. Then, tape down in place so paper is secure.

Trace the pattern pieces from the pattern sheet following the lines and markings for the correct size and the correct style (142). This pattern also includes pattern pieces, lines and markings for style 143 that should be ignored. Trace the sleeve facing from piece 6 as a separate pattern piece.

burda style magazine patterns do not have seam allowance included.

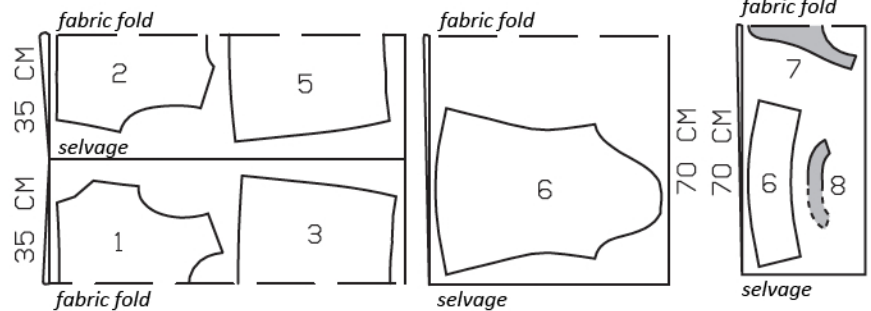
Seam and hem allowance to be added:
Seams and edges 1.5 cm (5/8 in), hem 4 cm (1 5/8 ins), side slits 2 cm (3/4 in).



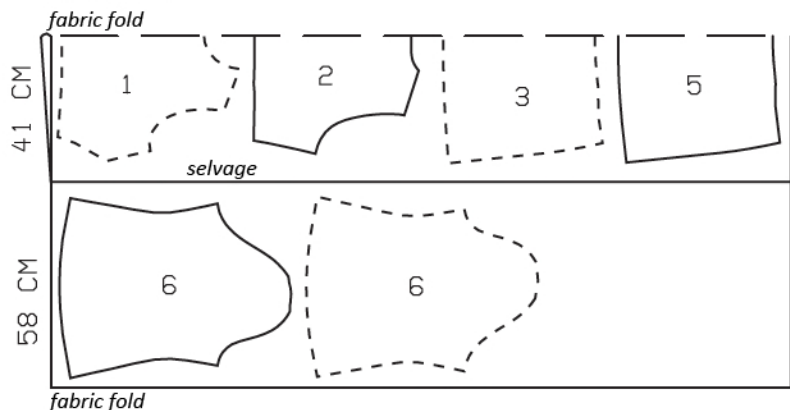
Fold the fabric as shown in the pattern layout. Right side faces in on a double layer of fabric. Right side faces up on a single layer of fabric. Cut right and left sleeves as opposites.

Jacquard, 140cm wide
Sizes 44, 46

Satin, 140cm wide
Sies 44-52



Sizes 48-52



Cutting Out

Jacquard:

- 1 upper front, on a fold 1x
- 2 upper back, on a fold 1x
- 3 lower front, on a fold 1x
- 5 lower back, on a fold 1x
- 6 sleeve 2x

Satin:

- 6 sleeve facing 2x
- 7 front facing, on a fold 1x
- 8 back facing, on a fold 1x

Lining: bias strip, 43 cm (17 ins) long, 3 cm (1 1/4 ins) wide (incl. allowances).

Interfacing: See shaded area on pattern layout. Iron a strip of interfacing, approx. 3 cm (1 1/4 ins) wide, to wrong fabric side of upper front, over marked slash line.

Sewing

Slash slit in centre front down to seam mark. Spread cut edges apart to a straight line and pin to bias lining strip, right sides facing, so that strip extends past cut edge, 1.5 cm (5/8 in) wide. Work from the side of the front piece to stitch 3 mm (1/8 in) from cut edge, tapering stitching toward bottom of slit. Press the half of the strip which lies under the front toward the opening. The lining strip serves as a seam allowance, to which the piping is basted.

Stitch shoulder seams on tunic and on facing. Press seams open.

Baste piping to neck and front slit edges so that piping cord lies on garment piece and the flat tapes lie on the seam allowance and the lining strip. At one shoulder seam, turn ends of piping under, toward seam allowance. Stitch piping in place directly next to piping cord (zipper foot). Slash slit in facing and spread cut edges apart to a straight line. Pin facing right sides together with neck and slit edges, and stitch in place along line of piping attachment seam. On neck edge, trim seam allowances. At end of slit, clip lining strip and piping. Turn facing and lining strip to inside. Press edges – piping cord extends. Sew inside facing edges in place loosely by hand.

Stitch bust darts. Trim dart allowances to 1 cm (3/8 in) wide, neaten together, and press down. Stitch remaining darts and press toward centre.

Stitch right side seam on upper pieces. Stitch right side seam on lower pieces, from upper edge to bottom slit mark. Press seam allowances open. Baste piping to lower edge of upper front and back so that piping cord lies on garment piece, next to seam line. Stitch upper unit to lower unit. Press seam allowances up – piping points down.

Sew invisible zip to edges of left side slit, between slit marks, see the “Helpful Hint” on next page. Leave top ends of zip tapes loose. Stitch left side seam above and below zip, leaving side slit open. Trim ends of zip approx. 1 cm (3/8 in) below slit and bind zip end with a scrap of lining



fabric.

Lay pleats in sleeves in direction of arrows and baste. Stitch sleeve seams on tunic sleeves and on facings. Press seam allowances open. Stitch sleeve facings to lower sleeve edges, right sides together. Turn facings down and stitch to seam allowances, close to seam. Turn facings to inside and sew inside edges in place by hand.

Set in sleeves.

Press hem and slit allowances to inside and sew in place by hand.



These special zippers come in various lengths. The zipper should be at least 2 cm (3/4 in) longer than the slit. It is sewn in place before the seam below the slit is stitched. A special presser foot is required to sew the zipper in place.

Sewing the zipper in place:

Open the zipper and push the coil back with your thumbnail to reveal the seam marking between the tape and the coil. Place the open zipper right side down on the right fabric side of one slit edge.

In order to stitch the zipper in place exactly along the marked seam line, you must first calculate the distance between the tape edge and the fabric edge as follows: width of seam allowance minus 1 cm (3/8 in) tape width = distance from edge of fabric. This will yield a value of 5 mm (3/16 in) if the width of the seam allowance is 1.5 cm (5/8 in).

Pin the top end of the zipper tape in place, the calculated distance from the edge of the fabric. The bottom end of the zipper will extend past the marked end of the slit. Place the presser foot on the zipper so that the coil is in the notch to the right of the needle (1). Stitch zipper in place, from the top to the marked end of the slit. Close zipper.

Place the other zipper tape face down on the opposite slit edge and pin in place at the top. Open zipper again. Place the presser foot on the top end of the zipper so that the coil is in the notch to the left of the needle (2). Sew the zipper in place, from the top to the end of the slit. Close zipper.

Now stitch the seam below the zipper, from bottom to top. Turn the loose lower end of the zipper out of the way, over the seam allowance. Stitch as close as possible to the last stitches of the zipper seams. Trim away excess zipper and bind the end with a scrap of fabric.