

139 Coat

Burda sizes 44, 46, 48, 50, 52

Back length approx. 103 cm (41 ins)

Materials

Wool velours,
width: 150 cm (59 ins)
length: 2.20 – 2.20 – 2.50 – 2.70 – 2.70 m
(2 1/2 – 2 1/2 – 2 3/4 – 3 – 3 yds).

Cloqué,
width: 95 cm (37 1/2 ins)
length: 1.50 – 1.50 – 1.50 – 1.55 – 1.55 m (1 3/4 yds).

Fake fur,
width: 140 cm (55 ins)
length: 0.15 m (1/4 yd) for all sizes.

Lining,
width: 140 cm (55 ins)
length: 2.60 – 2.60 – 2.60 – 3.00 – 3.00 m
(2 7/8 – 2 7/8 – 2 7/8 – 3 3/8 – 3 3/8 yds).

Interfacing and Vilene Bias Tape/stay tape.

A piece of batting.

1 separating zip, 55 cm (22 ins) long for sizes 44, 46 and 60 cm (24 ins) long for sizes 48 to 52 (will need to be shortened to 56 – 57 – 58 cm / 22 – 22 1/2 – 23 ins).

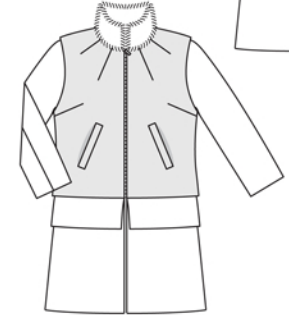
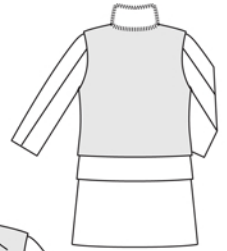
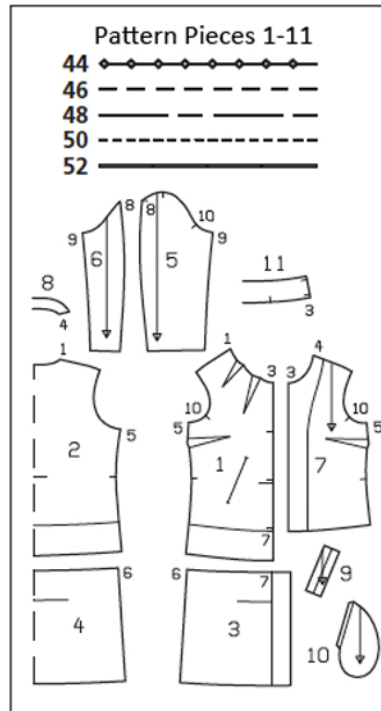
5 hooks and eyes.

Recommended fabrics: Coat fabrics of wool or blends. Fabrics with a textured surface for the waistcoat.

Preparations

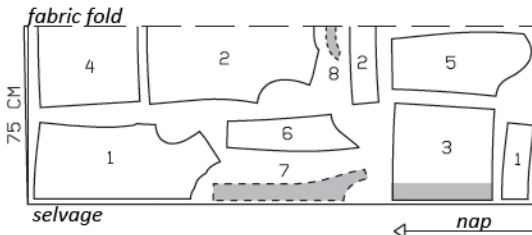
Print the pattern out on letter or A4 sized paper. It is very important to not scale or fit any of the pages, you must print the document in actual size. Your pattern will print on multiple pages, which you will then tile together. Arrange the sheets on a large, hard and flat surface matching up the numbers and letters (i.e. 6A to 6A). Cut or fold one of the sides and match the edge to it's corresponding side. Then, tape down in place so paper is secure.

Trace the pattern pieces from the pattern sheet following the lines and markings for the correct size and the correct style (139). This pattern also

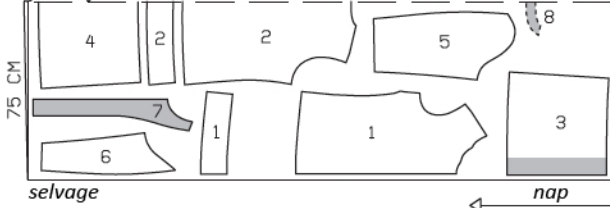


Cut from a double layer of fabric, right side facing in. Cut fake fur from a single layer of fabric, wrong side facing up. Note direction of nap. Cut only the backing fabric and not the fur fibres.

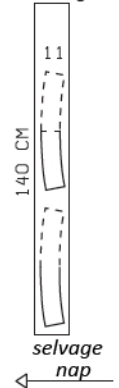
Wool Velours, 150cm wide
Sizes 44, 46



Size 48



Fake Fur, 140cm wide
selvage



includes pattern pieces, lines and markings for style 140 that should be ignored. Trace the hem facings from pieces 1 and 2 each as a separate pattern piece. On pattern piece 7, trim away the front facing on the marked "facing/lining" line. The seam marks for the hooks and eyes on piece 1 are for size 44. For sizes 46 – 52, mark the top seam mark the same distance from neck edge as for size 44. The bottom seam mark is the same for all sizes. Centre the third seam mark in between.

burda style magazine patterns do not have seam allowance included.

Seam and hem allowance to be added:

Seams and edges 1.5 cm (5/8 in), hem and sleeve hems 4 cm (1 5/8 ins), lining 1.5 cm (5/8 in).

Cutting Out Continued...

Wool velours (coat):

- 1 upper front 2x
- front hem facing 2x
- 2 upper back, on a fold 1x
- back hem facing, on a fold 1x
- 3 lower front 2x
- 4 lower back, on a fold 1x
- 5 sleeve front 2x
- 6 sleeve back 2x
- 7 front facing 2x
- 8 back facing, on a fold 1x

Cloqué (waistcoat):

- 1 front 2x
- 2 back, on a fold 1x
- 9 welt 2x
- 10 pocket piece 2x

Fake fur:

- 11 collar, on a fold 2x

Lining (coat):

- 7 upper front lining 2x
- piece 2 minus width of facings (neck and hem facing) and at centre back, on a fold, with an ease pleat of approx. 2 cm (3/4 in); piece 3 minus width of facing; and also pieces 4, 5 and 6.

Lining (waistcoat):

pieces 1 and 2, piece 10 to lining line.

Interfacing: See shaded areas on pattern layout. Also iron strips of interfacing, approx. 4 cm (1 5/8 ins) wide, to wrong sides of waistcoat front pieces, over pocket markings. Iron Vilene Bias Tape/stay tape to wrong side of neck and arm-hole edges.

Sewing

Stitch bust darts in upper fronts and stitch darts in neck edge. Cut darts open along centre (trimming dart allowances for the larger sizes) and press open, pressing points of darts flat.

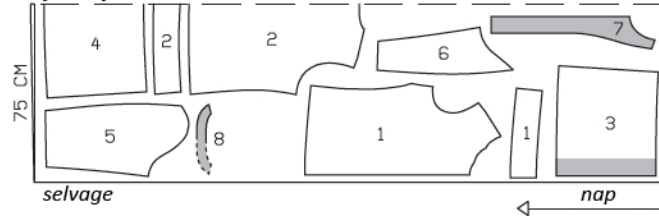
Stitch side seams on upper and lower units.

Stitch shoulder seams. Stitch side seams of hem facing. Press all seams open.

Wool Velours,

Sizes 50, 52

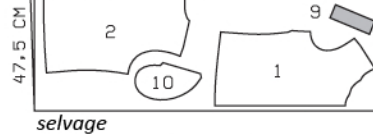
fabric fold



Cloqué, 95cm wide

Sizes 44-52

fabric fold

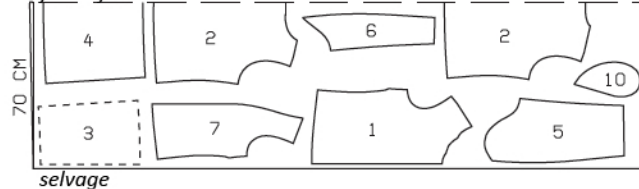


selvage

Lining, 140cm wide

Sizes 44-48

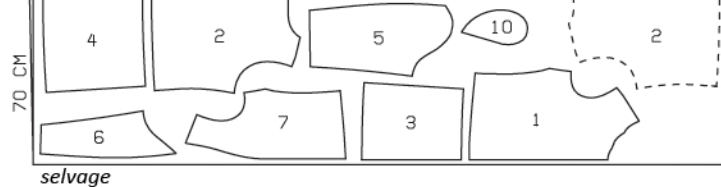
fabric fold



selvage

Sizes 50, 52

fabric fold



selvage

Pin hem facing right sides together with lower edge of upper fronts and upper back. Stitch along front edges, from marked stitching line, and along lower edge. Clip seam allowances of fronts close to end of stitching. Trim seam allowances, trimming corners diagonally. Turn facing to inside. Press edges.

Lay front facings on upper fronts, right sides facing. Stitch facings to front edges, up to marked stitching lines, leaving openings, approx. 1 cm (3/8 in) long, as marked, for hooks and eyes. Press facings forward over attachment seams but do not yet turn to inside. Lay upper coat unit on lower unit, with wrong side facing right side and so that faced lower edge meets placement line and attachment seams of front facings meet facing fold lines of lower unit. Stitch upper unit in place, along marked stitching line. Turn upper unit down at seam and stitch front facings to front self-facings. Turn upper unit up again. Clip seam allowances of self-facings at fold lines. Press allowances of facing seams open. On right front edge, slide hooks from inside to outside, through small openings in seam. On left front edge, slide eyes to outside, through openings. Sew ends of hooks and eyes in place on facings.

Sewing Continued...

Stitch sleeve seams (seam numbers 8 and 9). Press sleeve hem allowances to inside and sew in place by hand.

Set in sleeves. In area of each sleeve cap, lay a strip of batting, approx. 4 cm (1 5/8 ins) wide, under fabric and sew to seam allowances.

On lower edge of coat, press hem allowance to inside, then turn down again. Stitch back facing to shoulder edges of front facings. Turn facing to inside and baste to neck edge.

Stitch darts in upper front lining pieces. Press darts up. Baste ease pleat in upper back lining piece. Press pleat to one side and baste to upper and lower edges. Stitch upper lining pieces to lower pieces. Stitch side seams, shoulder seams and sleeve seams of lining. Set in sleeve linings.

Stitch lining right sides together with inside facing edges. Lay lining inside coat, with wrong sides facing, pulling linings into sleeves. Turn hem allowance to inside and sew in place by hand. Turn lining edge under along hem edge, press fold lightly, push up in a shallow curve, and pin to hem allowance. Sew facing and lining in place. Lay extra length of lining down and press lightly. Turn edges of sleeve linings under and sew to hem allowances. Lay extra length down and press.

Waistcoat

Sew slashed pockets with welts on fronts: Fold each welts piece lengthwise, right side facing in, and stitch across ends. Trim seam allowances. Turn welts right side out and press. Stitch welts to fronts, along marked attachment lines, right sides facing – welts point toward centre front. Lay pocket pieces of main fabric on fronts, opposite welts, and stitch in place, 1.5 cm (5/8 in) from welt attachment seams. These seams should be approx. 7 mm (1/4 in) shorter at both ends than the welt attachment seams. Slash between lines of stitching and clip diagonally toward seam ends. Do not cut pocket pieces. Pull pocket pieces to inside and press welts over pocket openings. Work from inside to stitch



pocket lining pieces to seam allowances of welt attachment seams. Fold small triangles at pocket opening ends to inside and stitch to pocket pieces. Trim pocket and lining pieces even and stitch together. Sew ends of welts in place by hand.

Stitch bust darts in fronts and stitch darts in neck edge. Cut darts open along centre (trimming dart allowances for the larger sizes) and press open, pressing points of darts flat. Stitch shoulder seams.

Separate zip halves. Pin each zip half face down on front edge of front piece (right fabric side), so teeth of zip point toward the side and edge of zip tape exactly meets marked seam line. Stitch along centre of zip tape.

Stitch darts in front lining pieces. Press darts flat. Stitch shoulder seams. Pin lining right sides together with waistcoat. Turn hem allowance of waistcoat to outside and stitch to lower lining edge, right sides facing, beginning at front edge and stitching approx. 5 cm (2 ins) long. Pin hem allowance and lining to front edges, laying extra length of lining down like a small fold and pinning it under allowance. Stitch along front edges, exactly along stitching lines of zip. Trim away seam allowances of front edges which extend past zip tapes. Stitch lining right sides together with armhole edges. Trim seam allowances. Turn waistcoat right side out.

Lay fronts right sides together with back and turn lining up. Stitch side seams as continuous seams. Turn lining down again. Baste lining to neck edge.

Press hem allowance to inside and sew in place by hand. Turn lining edge under and sew to hem allowance by hand. Lay extra length down and press.

Finishing coat:

Pull waistcoat over coat, with wrong side facing right side. Baste neck edges together. Pin fur collar pieces right sides together, pushing fur fibres toward collar. Stitch outer edges together, leaving attachment edge open and leaving 1 cm (3/8 in) open at each seam mark on front edges, for hooks and eyes. Trim seam allowances. Turn collar right side out. Stitch one collar piece to neck edge, right sides facing. On right front edge of collar, slide hooks from inside to outside, through small openings in seam. On left front edge, slide eyes to outside, through openings. Sew ends of hooks and eyes to seam allowance on inside. Turn inside collar edge under and sew to attachment seam.