

143 Dress

Burda sizes 44, 46, 48, 50, 52

Length from waist 66 cm (26 ins)

Materials

Jacquard,
width: 140 cm (55 ins)
length: 2.50 – 2.50 – 2.80 – 2.85 – 2.90 m
(2 3/4 – 2 3/4 – 3 1/8 – 3 1/4 – 3 1/4 yds).

Sequin fabric,
width: 110 cm (44 ins)
length: 0.35 m (1/2 yd) for all sizes.

Soutache braid,
width: 5 mm (3/16 in)
length: 2.45 – 2.45 – 2.50 – 2.50 – 2.55 m
(2 3/4 – 2 3/4 – 2 3/4 – 2 3/4 – 2 7/8 yds).

Interfacing.

1 invisible zip, 40 cm (16 ins) long.

Recommended fabrics: Dress fabrics with some body.

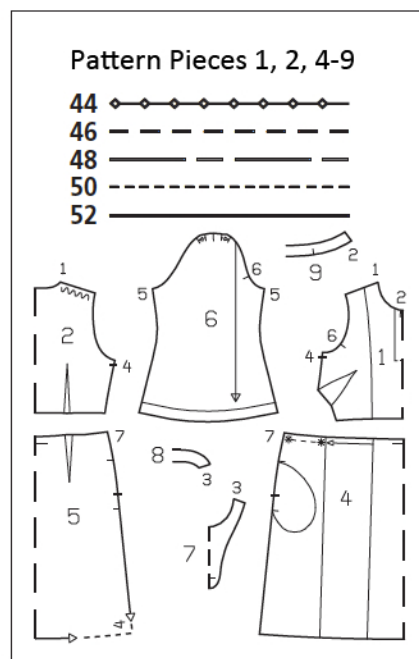
Preparations

Print the pattern out on letter or A4 sized paper. It is very important to not scale or fit any of the pages, you must print the document in actual size. Your pattern will print on multiple pages, which you will then tile together. Arrange the sheets on a large, hard and flat surface matching up the numbers and letters (i.e. 6A to 6A). Cut or fold one of the sides and match the edge to it's corresponding side. Then, tape down in place so paper is secure.

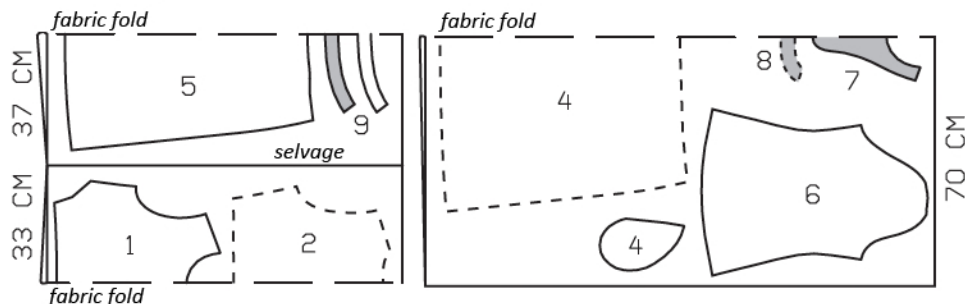
Trace the pattern pieces from the pattern sheet following the lines and markings for the correct size and the correct style (143). This pattern also includes pattern pieces, lines and markings for style 142 that should be ignored. Trace the band from piece 6 as a separate pattern piece. Trace the pocket piece from piece 4 as a separate pattern piece – it is the same for all sizes.

burda style magazine patterns do not have seam allowance included.

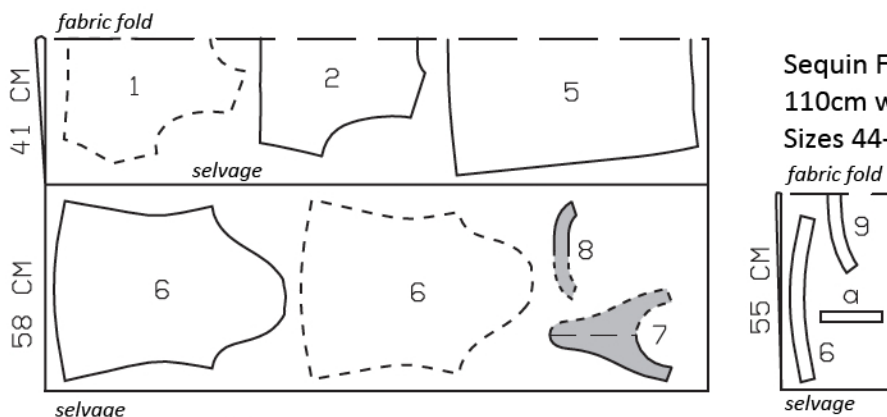
Seams and edges 1.5 cm (5/8 in), hem 4 cm (1 5/8 ins).



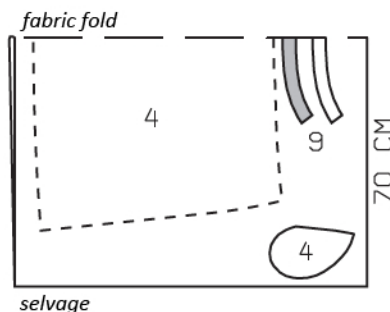
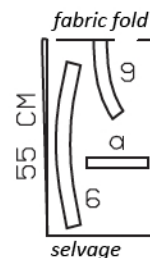
Jacquard, 140cm wide
Sizes 44, 46



Sizes 48-52



Sequin Fabric,
110cm wide
Sizes 44-52



Fold the fabric as shown in the pattern layout. Right side faces in on a double layer of fabric. Right side faces up on a single layer of fabric. Cut right and left sleeves as opposites.

Cutting Out

Jacquard:

- 1 front, on a fold 1x
- 2 back, on a fold 1x
- 4 front skirt panel, on a fold 1x
- pocket piece 2x
- 5 back skirt panel, on a fold 1x
- 6 sleeve 2x
- 7 front facing, on a fold 1x
- 8 back facing, on a fold 1x
- 9 standing collar, on a fold 2x

Sequin fabric:

- 6 sleeve band 2x
- 9 standing collar, on a fold 1x

Draft the following pieces NOT included in the pattern:

- a) 2 front bands 19.5 – 20 – 21 – 22 – 23 cm (7 3/4 – 8 – 8 3/8 – 8 3/4 – 9 1/8 ins) long, 4 cm (1 5/8 ins) wide (incl. allowances).

Interfacing: See shaded area on pattern layout. Iron a strip of interfacing, approx. 3 cm (1 1/4 ins) wide, to wrong fabric side of front, over marked slash line.

Sewing

Sew soutache braid to front as marked – side edge of braid meets attachment line.

Pin facing to front, over slit marking, right sides facing. Work from wrong fabric side to stitch 3 mm (1/8 in) from all sides of slit marking. Slash between lines of stitching and clip diagonally into bottom corners. Turn facing to inside and press slit edges. Begin at each edge of slit and baste facing to neck edge, approx. 5 cm (2 ins) long.

On each front band, press long edges and bottom end to wrong side, 1 cm (3/8 in) wide. Pin bands to slit edges on front and sew pressed- under edges in place by hand.

Stitch bust darts. Trim dart allowances to 1 cm (3/8 in) wide, neaten together, and press down. Stitch back dart and press toward centre.



Stitch shoulder seams on dress bodice and on facing. Press seam allowances open. Baste facing to neck edge. Stitch right side seam of bodice.

Fold pleats in skirt front in direction of arrows and press pleat folds, down to the hem edge. Pin soutache braid to outer pleat folds and sew in place, down to approx. 10 cm (4 ins) above hem edge. Baste pleats to upper edge of skirt.

Gather upper edge of skirt front, between each pair of asterisks, to 11 – 11.5 – 12.5 – 13.5 – 14.5 cm (4 3/8 – 4 1/2 – 5 – 5 3/8 – 5 3/4 ins). Stitch darts in skirt back and press toward centre.

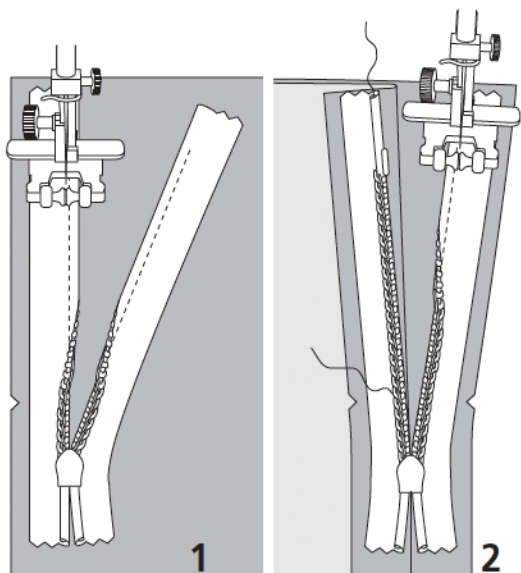
Stitch right skirt side seam, not stitching across pocket opening. Inseam pockets: Pin pocket pieces right sides together with seam allowances of pocket opening edges and stitch in place directly along marked seams lines. Press pocket pieces forward and stitch together.

Stitch skirt to bodice. Press seam allowances up. Sew invisible zip to left side edges, between slit marks, see the “Helpful Hint” on next page. Leave top ends of zip tapes loose. Stitch left side seam above and below zip.

Baste collar piece of sequin fabric to interfaced collar piece, with right sides of both pieces facing up. Treat this piece as one layer of fabric from now on. Lay collar pieces together, right sides facing, and stitch together along front and upper edges. At front, begin and end stitching exactly on seam line of attachment edge. Trim seam allowances. Turn collar right side out and press. Stitch outer collar piece to neck edge of dress. Turn edge of inside collar piece under and sew to attachment seam.

Stitch sleeve seams on dress sleeves and on sleeve band pieces. Press seams open. Press allowance on upper edge of each sleeve band to wrong side. Work from inside to stitch each sleeve band to lower edge of sleeve, with right side of sleeve band facing wrong side of sleeve. Turn bands to outside and sew upper band edges in place by hand. Fold pleats in sleeve caps in direction of arrows and baste. Set in sleeves.

Press hem allowance to inside and sew in place by hand. Press pleats in hem edge. Sew soutache braid to pleat folds, down to hem edge. Fold ends of braid over hem edge to inside and sew in place.



These special zippers come in various lengths. The zipper should be at least 2 cm (3/4 in) longer than the slit. It is sewn in place before the seam below the slit is stitched. A special presser foot is required to sew the zipper in place.

Sewing the zipper in place:

Open the zipper and push the coil back with your thumbnail to reveal the seam marking between the tape and the coil. Place the open zipper right side down on the right fabric side of one slit edge.

In order to stitch the zipper in place exactly along the marked seam line, you must first calculate the distance between the tape edge and the fabric edge as follows: width of seam allowance minus 1 cm (3/8 in) tape width = distance from edge of fabric. This will yield a value of 5 mm (3/16 in) if the width of the seam allowance is 1.5 cm (5/8 in).

Pin the top end of the zipper tape in place, the calculated distance from the edge of the fabric. The bottom end of the zipper will extend past the marked end of the slit. Place the presser foot on the zipper so that the coil is in the notch to the right of the needle (1). Stitch zipper in place, from the top to the marked end of the slit. Close zipper.

Place the other zipper tape face down on the opposite slit edge and pin in place at the top. Open zipper again. Place the presser foot on the top end of the zipper so that the coil is in the notch to the left of the needle (2). Sew the zipper in place, from the top to the end of the slit. Close zipper.

Now stitch the seam below the zipper, from bottom to top. Turn the loose lower end of the zipper out of the way, over the seam allowance. Stitch as close as possible to the last stitches of the zipper seams. Trim away excess zipper and bind the end with a scrap of fabric.