

145 Skirt

Burda sizes 44, 46, 48, 50, 52

Skirt length (incl. waistband) 64 cm
(upper waistband edge = waist)

Materials

Jacquard,
width: 140 cm (55 ins)
length: 1.40 m (1 5/8 yds) for all sizes.

Interfacing.

1 invisible zip, 22 cm (9 ins) long.

Recommended fabrics: Skirt fabrics with some body.

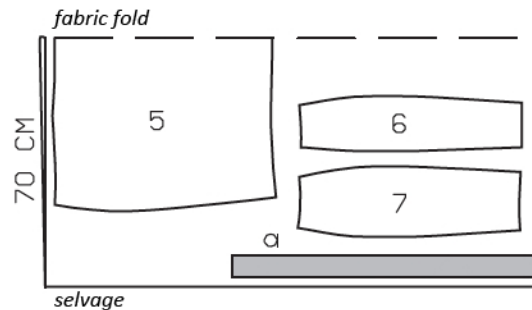
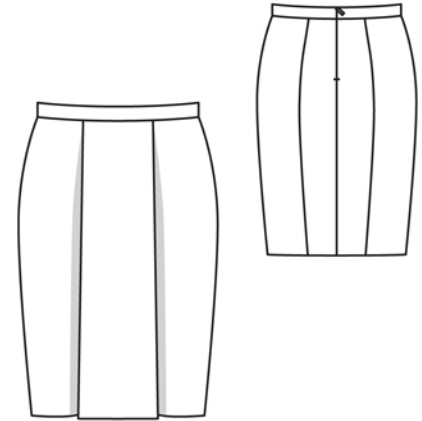
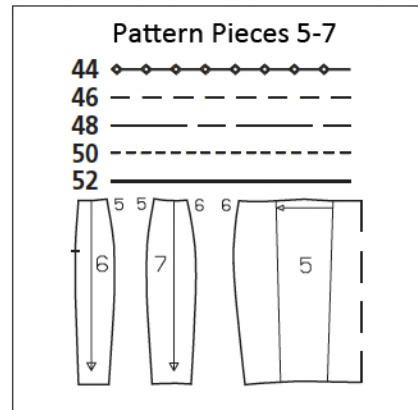
Preparations

Print the pattern out on letter or A4 sized paper. It is **very** important to not scale or fit any of the pages, you must print the document in **actual size**. Your pattern will print on multiple pages, which you will then tile together. Arrange the sheets on a large, hard and flat surface matching up the numbers and letters (i.e. 6A to 6A). Cut or fold one of the sides and match the edge to it's corresponding side. Then, tape down in place so paper is secure.

Trace the pattern pieces from the pattern sheet following the lines and markings for the correct size and the correct style (145). This pattern also includes pattern pieces, lines and markings for style 146 that should be ignored.

burda style magazine patterns do not have seam allowance included.

Seam and hem allowance to be added:
Seams and edges 1.5 cm (5/8 in), hem 4 cm (1 5/8 ins).



Cut from a double layer of fabric, right side facing in.

Cutting Out

5 front skirt panel, on a fold 1x
6 centre back skirt panel 2x
7 side back skirt panel 2x

Draft the following pieces NOT included in the pattern:
a) waistband, 85 – 89 – 95 – 101 – 107 cm (33 1/2 – 35 – 37 1/2 – 39 3/4 – 42 1/4 ins) long, 6 cm (2 1/2 ins) wide, finished width 3 cm (1 1/4 ins).

Interfacing: See shaded area on pattern layout.

Sewing

Work from inside to baste pleats in skirt front, from upper to lower edges. Press pleats in direction of arrows and baste to upper edge.

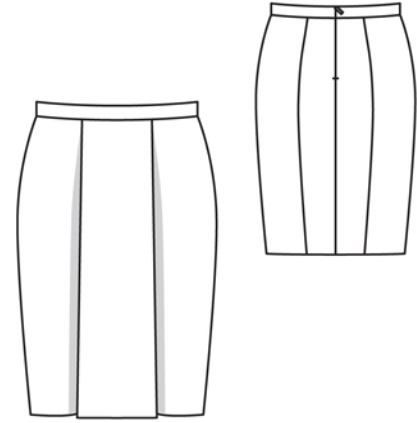
Stitch section seams on skirt back. Stitch side seams. Press seams open.

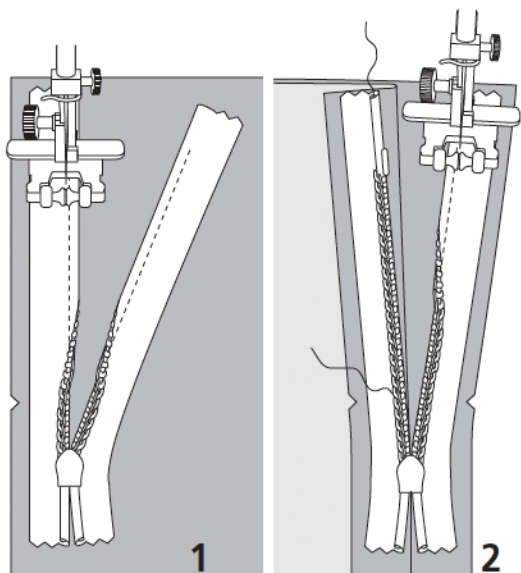
Fold waistband in half and press, wrong side facing in. Unfold waistband again. Stitch waistband to upper skirt edge. Press allowances of attachment seam onto waistband.

Sew invisible zip to back slit edges and to outer waistband half, see the "Helpful Hint" on next page. Stitch centre back seam from lower edge to zip.

Fold waistband in half again. Turn inside waistband edge under and baste over attachment seam. Sew ends to zip tapes. Working from outer side of skirt, stitch along waistband attachment seam, catching inner waistband edge.

Remove basting at pleats. Press hem allowance to inside and sew in place by hand. Press pleats in hem.





These special zippers come in various lengths. The zipper should be at least 2 cm (3/4 in) longer than the slit. It is sewn in place before the seam below the slit is stitched. A special presser foot is required to sew the zipper in place.

Sewing the zipper in place:

Open the zipper and push the coil back with your thumbnail to reveal the seam marking between the tape and the coil. Place the open zipper right side down on the right fabric side of one slit edge.

In order to stitch the zipper in place exactly along the marked seam line, you must first calculate the distance between the tape edge and the fabric edge as follows: width of seam allowance minus 1 cm (3/8 in) tape width = distance from edge of fabric. This will yield a value of 5 mm (3/16 in) if the width of the seam allowance is 1.5 cm (5/8 in).

Pin the top end of the zipper tape in place, the calculated distance from the edge of the fabric. The bottom end of the zipper will extend past the marked end of the slit. Place the presser foot on the zipper so that the coil is in the notch to the right of the needle (1). Stitch zipper in place, from the top to the marked end of the slit. Close zipper.

Place the other zipper tape face down on the opposite slit edge and pin in place at the top. Open zipper again. Place the presser foot on the top end of the zipper so that the coil is in the notch to the left of the needle (2). Sew the zipper in place, from the top to the end of the slit. Close zipper.

Now stitch the seam below the zipper, from bottom to top. Turn the loose lower end of the zipper out of the way, over the seam allowance. Stitch as close as possible to the last stitches of the zipper seams. Trim away excess zipper and bind the end with a scrap of fabric.