

144 Jacket

Burda sizes 44, 46, 48, 50, 52

Back length approx. 58 cm (23 ins)

Materials

Brocade,
width: 130 cm (51 ins)
length: 1.90 – 2.00 – 2.10 – 2.25 – 2.25 m
(2 1/8 – 2 1/4 – 2 3/8 – 2 5/8 – 2 5/8 yds).

Lining,
width: 140 cm (55 ins)
length: 1.35 – 1.35 – 1.35 – 1.40 – 1.40 m (1 5/8 yds).

Interfacing.

Shoulder pads.

Recommended fabrics: Jacket fabrics.

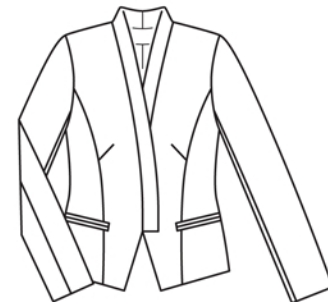
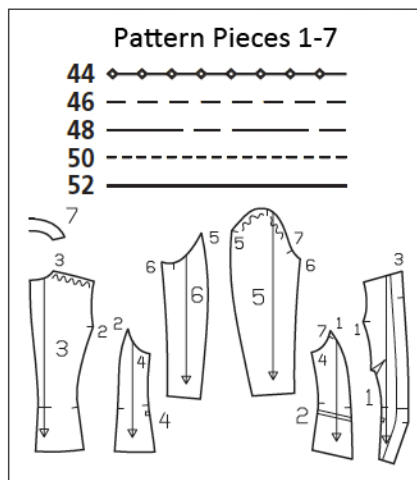
Preparations

Print the pattern out on letter or A4 sized paper. It is **very important** to not scale or fit any of the pages, you must print the document in **actual size**. Your pattern will print on multiple pages, which you will then tile together. Arrange the sheets on a large, hard and flat surface matching up the numbers and letters (i.e. 6A to 6A). Cut or fold one of the sides and match the edge to it's corresponding side. Then, tape down in place so paper is secure.

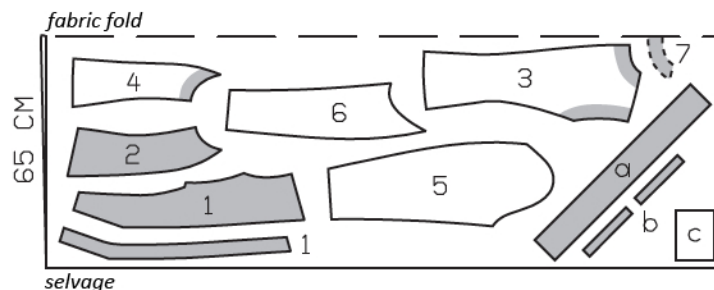
Trace the pattern pieces from the pattern sheet following the lines and markings for your size. Trace the front facing from piece 1 as a separate pattern piece. The pocket lines on piece 1 are marked in full for size 44 only. For sizes 46 – 52, mark front end of pocket the same distance from section seam as for size 44.

burda style magazine patterns do not have seam allowance included.

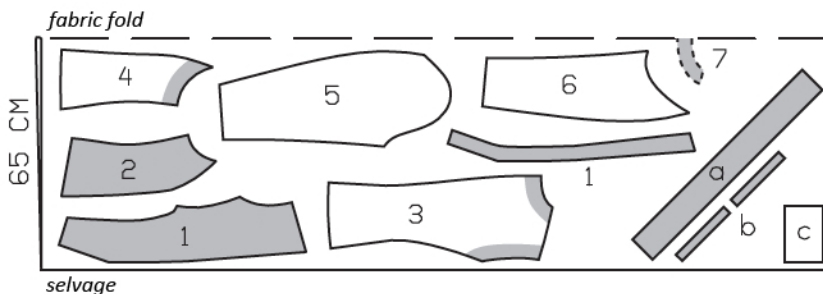
Seam and hem allowance to be added:
Seams and edges 1.5 cm (5/8 in), hem and sleeve hems 4 cm (1 5/8 ins), lining 1.5 cm (5/8 in).



Sizes 44-48



Sizes 50, 52



Cut from a double layer of fabric, right side facing in.

Cutting Out

Brocade:

- 1 centre front 2x
- front facing 2x
- 2 side front 2x
- 3 centre back 2x
- 4 side back 2x
- 5 upper sleeve 2x
- 6 under sleeve 2x
- 7 back facing, on a fold 1x

Draft the following pieces NOT included in the pattern:

- a) 2 neck band pieces, cut on bias, 62 – 63.5 – 64.5 – 66 – 67.5 cm (24 1/2 – 25 – 25 1/2 – 26 – 26 5/8 ins) long, 8 cm (3 1/4 ins) wide, finished width 4 cm (1 5/8 ins),
- b) 4 bias piping strips, 17 – 17.5 – 18 – 18.5 – 19 cm (6 3/4 – 7 – 7 1/8 – 7 1/4 – 7 1/2 ins) long, 3 cm (1 1/4 ins) wide (incl. allowances),
- c) 2 pocket pieces, 17 – 17.5 – 18 – 18.5 – 19 cm (6 3/4 – 7 – 7 1/8 – 7 1/4 – 7 1/2 ins) wide and 14 cm (5 1/2 ins) long (incl. allowances).

Lining: piece 1 minus width of facing; piece 3 minus width of facing and with an ease pleat of approx. 2 cm (3/4 in) at centre back; pieces 2, 4, 5 and 6; and also pocket piece.

Interfacing: See shaded area on pattern layout. Also interface hem allowances. Iron a strip of interfacing, approx. 4 cm (1 5/8 ins) wide, to wrong side of each piece 4, over pocket marking.

Sewing

Stitch bust darts. Press darts down.

Stitch front section seams and side seams. Press seam allowances open.

Sew slashed pockets on fronts: Hand baste 6 mm (1/4 in) from each piping attachment line (= finished width of piping), to make placement lines visible on right side of fabric. Fold piping strips lengthwise, right side facing out, and press. Lay folded piping strips on front and pin so that fold edge meets marked placement line.



Stitch each piping in place along attachment line, 6 mm (1/4 in) from fold edge. Slash between lines of stitching and clip diagonally toward each last stitch, not cutting piping. Turn piping into pocket openings and press. Fold small triangles at pocket opening ends to inside and stitch to piping, from seam end to seam end. Stitch pocket lining pieces to seam allowances of lower piping attachment seams and stitch pocket pieces of jacket fabric to seam allowances of upper piping attachment seams. Trim pocket pieces even and stitch together. Stitch centre back seam, back section seams, and shoulder seams. Stitch facing seams. Press all seams open.

Stitch neck band pieces together (= centre back seam). Press seam allowances open. Fold neck band lengthwise, right side facing in. Stitch across ends. Turn band right side out. Pin open band edges together. Baste band to front edges, from lower seam mark to upper seam mark. Between upper seam marks, baste band to neck edge, easing as needed.

Pin facing right sides together with jacket, catching band. Stitch along hem edge, front edges, and neck edge, at hem edge, leaving the last 3 cm (1 1/4 ins) before ends of facing open. Trim seam allowances, trimming corners diagonally. Lay facing on seam allowance and stitch to seam allowance, close to seam, stitching as far as possible at corners. Turn facing to inside and turn band forward. Then turn hem allowance to inside, as continuation of facing. Press edges. Sew hem allowance in place by hand.

Stitch sleeve seams. Press sleeve hem allowances to inside and sew in place by hand. Set in sleeves, easing sleeve caps. Sew shoulder pads in place.

Sew lining: On back lining pieces, stitch allowances of centre seam together, 1 cm (3/8 in) from edge. For the ease pleat, stitch along centre back, at top and bottom, each approx. 5 cm (2 ins) long, and baste in between. Press pleat to one side. Stitch darts and seams of lining. Set in sleeve linings.

Sew lining in jacket, hem the jacket: Stitch lining to inside facing edges, turning hem allowance of facing down to do so. Lay lining inside jacket, wrong sides facing, pulling linings into sleeves. Turn lining under along hem edge, press fold edge lightly, push up in a shallow curve, and pin to hem allowance. Sew facings and lining in place. Lay extra length of lining down and press lightly. Above sleeve hems, pin a fold, approx. 1 cm (3/8 in) deep, in lining. Turn edge of sleeve lining under and sew to hem allowance. Lay extra length down and press.