

### 146 Dress

Burda sizes 44, 46, 48, 50, 52

Length from waist 64 cm (25 1/4 ins)

### Materials

Brocade,  
width: 130 cm (51 ins)  
length: 1.65 – 1.65 – 2.00 – 2.00 – 2.00 m  
(1 7/8 – 1 7/8 – 2 1/4 – 2 1/4 – 2 1/4 yds).

Lining,  
width: 140 cm (55 ins)  
length: 1.60 m (1 3/4 yds) for all sizes.

Interfacing.

Vilene Bias Tape/stay tape.

1 invisible zip, 60 cm (24 ins) long.

Recommended fabrics: Dress fabrics with some body.

### Preparations

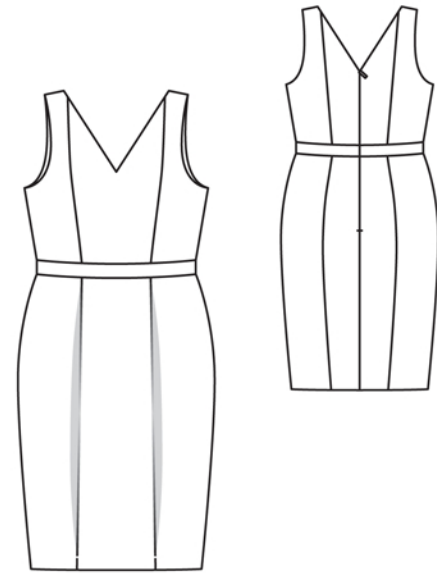
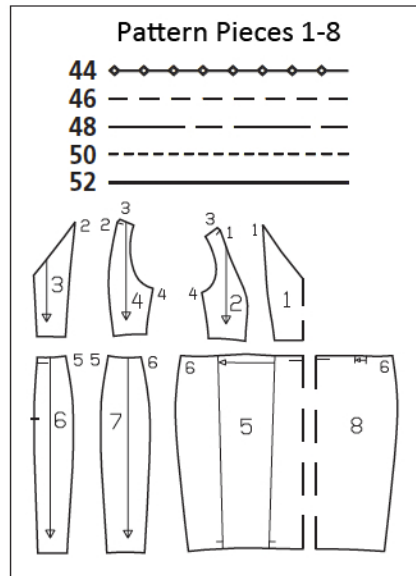
Print the pattern out on letter or A4 sized paper. It is **very important** to not scale or fit any of the pages, you must print the document in **actual size**. Your pattern will print on multiple pages, which you will then tile together. Arrange the sheets on a large, hard and flat surface matching up the numbers and letters (i.e. 6A to 6A). Cut or fold one of the sides and match the edge to it's corresponding side. Then, tape down in place so paper is secure.

Trace the pattern pieces from the pattern sheet following the lines and markings for the correct size and the correct style (146). This pattern also includes pattern pieces, lines and markings for style 145 that should be ignored. The pleat arrow on piece 8 is marked for size 44. For the other sizes, mark the pleat arrow according to the size lines.

**burda style magazine patterns do not have seam allowance included.**

Seam and hem allowance to be added:

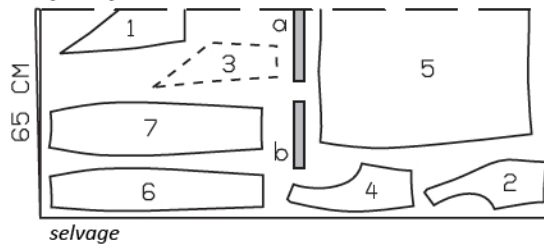
Seams and edges 1.5 cm (5/8 in), hem 4 cm (1 5/8 ins), lining 1.5 cm (5/8 in).



Brocade, 130cm wide

Sizes 44, 46

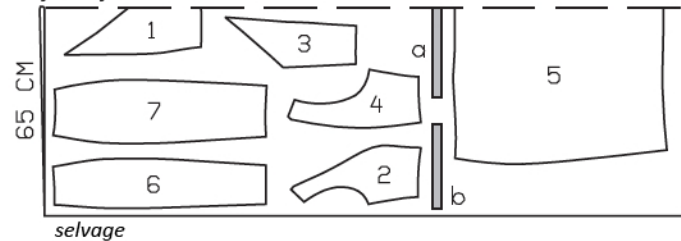
*fabric fold*



Fold the fabric as shown in the pattern layout. Right side faces in on a double layer of fabric. Right side faces up on a single layer of fabric. Cut right and left centre back pieces as opposites.

Sizes 48-52

*fabric fold*



### Cutting Out

Brocade:

1 centre front, on a fold 1x

2 side front 2x

3 centre back 2x

4 side back 2x

5 front skirt panel, on a fold 1x

6 centre back skirt panel 2x

7 side back skirt panel 2x

Draft the following pieces:

a) front waistband piece, 44.5 – 46.5 – 49.5 – 52.5 – 55.5 cm (17 1/2 – 18 1/4 – 19 1/2 – 20 3/4 – 22 ins) long, 3 cm (1 1/4 ins) wide,

b) 2 back waistband pieces, 21 – 22 – 23.5 – 25 – 26.5 cm (8 3/8 – 8 3/4 – 9 1/4 – 10 – 10 1/2 ins) long, 3 cm (1 1/4 ins) wide.

Lining:

8 front skirt lining, on a fold 1x  
pieces 1 to 4, 6, and 7, and also pieces a and b.

Interfacing: See shaded area on pattern layout. Iron Vilene Bias Tape/stay tape to wrong side of neck and armholes edges on pieces of main fabric.

## Sewing

Stitch front and back section seams of bodice. Press seam allowances open.

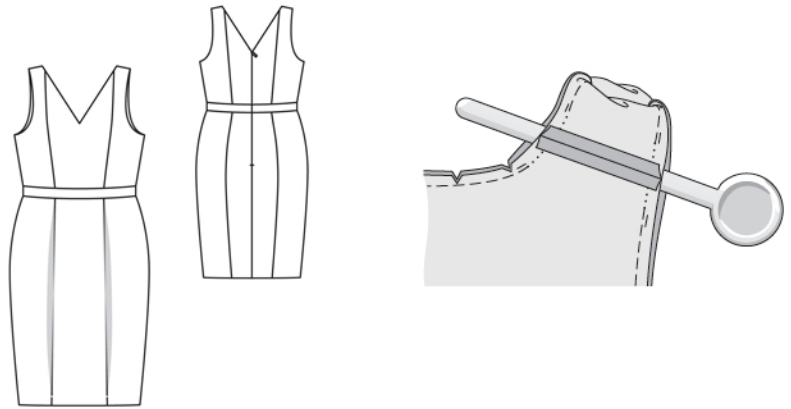
Work from inside to baste pleats in skirt front, from upper to lower edges. Press inside pleat folds, do not press outer pleat folds. Lay pleats in direction of arrows and baste to upper edge. Stitch section seams on skirt back.

Stitch front waistband piece to lower edge of bodice front and upper edge of skirt front. Stitch back waistband pieces to lower edges of bodice backs and upper edges of skirt backs. Trim seam allowances and press seams open.

Sew invisible zip to back slit edges, see the "Helpful Hint" on next page. Stitch centre back seam from lower edge to zip.

Fold pleats in front skirt lining piece and baste. Stitch lining pieces together as for pieces of main fabric.

Neck and armhole edges, shoulder seams: Pin lining pieces right sides together with front and back pieces. At zip slit, turn lining back, approx. 5 mm (3/16 in) before marked seam line, and pin to neck edge. On slit edges of dress, turn allowances to outside and pin to neck edge, over lining. Stitch along neck and armhole edges, beginning and ending 2 cm (3/4 in) below each shoulder seam line. Trim seam allowances. Clip allowances at centre front and clip along curves, close to stitching. Turn lining to inside on front (not on back). Slide front shoulder edges between the still-unturnd back shoulder edges – right fabric sides of front and back and lining lie facing. Stitch shoulder seams of dress and lining. Pull front and lining which lie inside up and out slightly and press seams open. This will be easier if you slip the handle of a wooden spoon under the seams. Then stitch the remaining open edges closed. Pull front down out of shoulder edges of back – the lining will thereby be pulled to the inside. Press edges.



Lay front right sides together with back, turning lining up. Stitch side seams as continuous seams. Turn lining down again. Pin upper waistband attachment seams of main fabric and lining together exactly. Turn skirt and skirt lining up and stitch allowances of waistband attachment seams together, as far as possible, close to seam. Turn skirt and skirt lining down. On lining turn back slit edges under and sew to zip tapes by hand.

Remove basting at pleats. Press hem allowance to inside and sew in place by hand. Stitch pleats across finished hem, below seam marks. Press inside pleat folds in hem and sew to hem allowance.

Turn lining hem allowance to wrong side, turn raw edge under, and stitch so that lining is 2 cm (3/4 in) shorter than the dress.



These special zippers come in various lengths. The zipper should be at least 2 cm (3/4 in) longer than the slit. It is sewn in place before the seam below the slit is stitched. A special presser foot is required to sew the zipper in place.

### **Sewing the zipper in place:**

Open the zipper and push the coil back with your thumbnail to reveal the seam marking between the tape and the coil. Place the open zipper right side down on the right fabric side of one slit edge.

In order to stitch the zipper in place exactly along the marked seam line, you must first calculate the distance between the tape edge and the fabric edge as follows: width of seam allowance minus 1 cm (3/8 in) tape width = distance from edge of fabric. This will yield a value of 5 mm (3/16 in) if the width of the seam allowance is 1.5 cm (5/8 in).

Pin the top end of the zipper tape in place, the calculated distance from the edge of the fabric. The bottom end of the zipper will extend past the marked end of the slit. Place the presser foot on the zipper so that the coil is in the notch to the right of the needle (1). Stitch zipper in place, from the top to the marked end of the slit. Close zipper.

Place the other zipper tape face down on the opposite slit edge and pin in place at the top. Open zipper again. Place the presser foot on the top end of the zipper so that the coil is in the notch to the left of the needle (2). Sew the zipper in place, from the top to the end of the slit. Close zipper.

Now stitch the seam below the zipper, from bottom to top. Turn the loose lower end of the zipper out of the way, over the seam allowance. Stitch as close as possible to the last stitches of the zipper seams. Trim away excess zipper and bind the end with a scrap of fabric.