

### 124 Skirt

Size 34, 36, 38, 40, 42, 44,  
Length from waist 56 cm (22 1/4 ins)  
(waistband centre = waist)

### Materials

Flannel,  
width: 150 cm (59 ins)  
length: 0.90 m (1 yd) for all sizes.

Lining,  
width: 140 cm (55 ins)  
length: 0.65 – 0.65 – 0.65 – 0.70 – 0.80 – 0.80 m  
(3/4 – 3/4 – 3/4 – 7/8 – 7/8 – 7/8 yd).

Interfacing.

1 invisible zip, 22 cm (9 ins) long.

Recommended fabrics: Skirt fabrics with some body,  
of wool or blends.

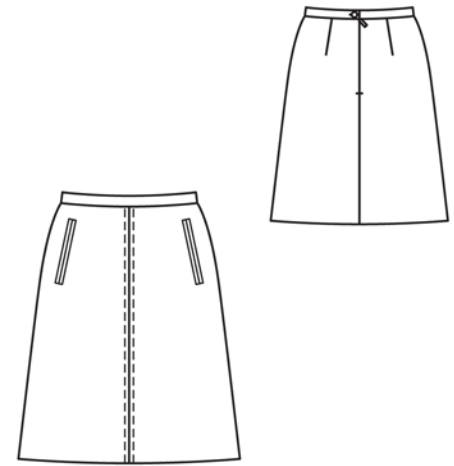
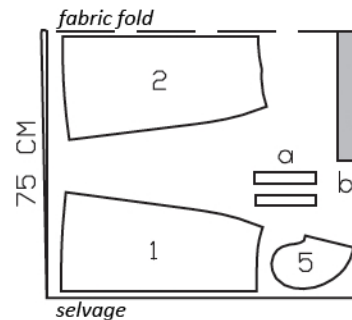
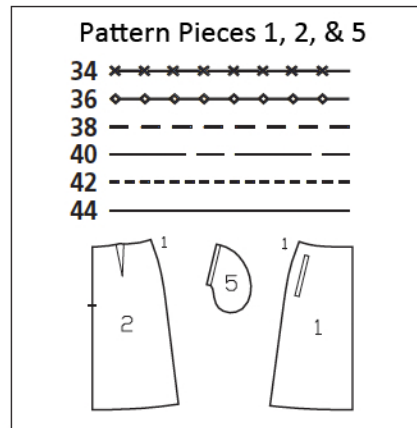
### Preparations

Print the pattern out on letter or A4 sized paper.  
It is **very important** to not scale or fit any of the  
pages, you must print the document in  
**actual size**. Your pattern will print on multiple  
pages, which you will then tile together. Arrange  
the sheets on a large, hard and flat surface  
matching up the numbers and letters (i.e. 6A to  
6A). Cut or fold one of the sides and match the  
edge to it's corresponding side. Then, tape down  
in place so paper is secure.

Trace the pattern pieces from the pattern sheet  
following the lines and markings for the correct  
size and the correct style (124). This pattern also  
includes pattern pieces, lines and markings for  
style 123, 125 & 126 that should be ignored.

**burda style magazine patterns do not have seam  
allowance included.**

Seam and hem allowance to be added:  
Seams and edges 1.5 cm (5/8 in), hem 4 cm (1  
5/8 ins), lining 1.5 cm (5/8 in)



Cut from a double layer of fabric,  
right side facing in.

### Cutting Out

Flannel:  
1 front skirt panel 2x  
2 back skirt panel 2x  
5 pocket piece 2x

Draft the following pieces NOT included in the pattern:  
a) 4 welt strips, 17 cm (63/4 ins) long, 4 cm (1 5/8 ins) wide  
(incl. allowances),

b) waistband, with 2 cm (3/4 in) underlap, 68 – 72 – 76 – 80  
– 84 – 88 cm (26 3/4 – 28 1/2 – 30 – 31 1/2 – 33 – 34 3/4 ins)  
long, 5 cm (2 ins) wide, finished width 2.5 cm (1 in).

Lining: piece 1, on a fold at centre; piece 5 to lining line; and  
piece 2.

Interfacing: See shaded area on pattern layout. Also iron  
strips of interfacing, approx. 5 cm (2 ins) wide, to wrong side  
of fabric, over pocket markings.

## Sewing

Stitch darts in back skirt panels. Press darts toward centre. Sew invisible zip to back slit edges, see "Helpful Hint" on next page. Stitch centre back seam from lower edge to zip. Press seam allowances open.

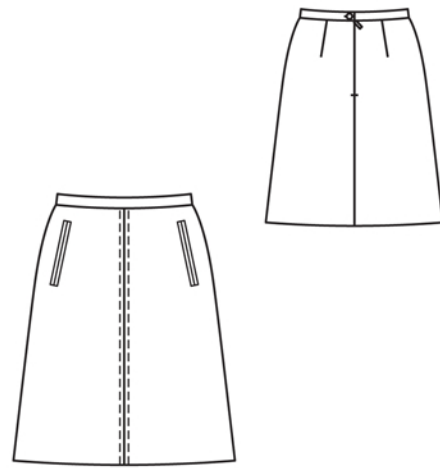
Stitch centre seam on front skirt panels. Press seam allowances open. Topstitch 7 mm (1/4 in) to each side of seam.

Sew welt pockets on skirt front: To make placement lines for welts visible on right fabric side, hand baste 7 mm (1/4 in) from welt attachment lines (= finished width of welt). Fold welt strips lengthwise, right side facing out, and press. Lay each folded welt strip on skirt front and pin so that fold edge of welt meets placement line and open welt edges lie over marked pocket opening. Stitch welts in place along attachment lines, 7 mm (1/4 in) from fold edges. Slash between lines of stitching and clip diagonally toward seam ends but do not cut welt strips. Turn welts toward pocket openings and press. Fold small triangles at pocket opening ends to inside and stitch to welts, from seam end to seam end. Stitch pocket lining pieces to seam allowances of front welt attachment seams. Turn pocket pieces toward centre. Topstitch skirt close to front welt attachment seams. Stitch pocket pieces of skirt fabric to allowances of side welt attachment seams. Stitch pocket pieces together. Topstitch skirt close to pocket ends and side welt attachment seams.

Stitch side seams. Press seam allowances open.

On lining, stitch darts and seams. Pull lining into skirt, with wrong sides facing. Turn lining edges under and sew to zip tapes. Baste lining to upper skirt edge, without turning in.

Stitch waistband to upper skirt edge, leaving underlap extending at right back slit edge. Press allowances of attachment seam and of other long edge onto waistband. Fold waistband lengthwise and stitch across ends. Turn right side out. Baste inside waistband edge to attachment seam and baste underlap edges together. Work from outside of skirt to stitch along waistband attachment seam. Sew open underlap



edges closed. Work buttonhole in left back waistband end.

Press hem allowance to inside and sew in place by hand. Hem lining so that it is approx. 2 cm (3/4 in) shorter than skirt.



These special zippers come in various lengths. The zipper should be at least 2 cm (3/4 in) longer than the slit. It is sewn in place before the seam below the slit is stitched. A special presser foot is required to sew the zipper in place.

### **Sewing the zipper in place:**

Open the zipper and push the coil back with your thumbnail to reveal the seam marking between the tape and the coil. Place the open zipper right side down on the right fabric side of one slit edge.

In order to stitch the zipper in place exactly along the marked seam line, you must first calculate the distance between the tape edge and the fabric edge as follows: width of seam allowance minus 1 cm (3/8 in) tape width = distance from edge of fabric. This will yield a value of 5 mm (3/16 in) if the width of the seam allowance is 1.5 cm (5/8 in).

Pin the top end of the zipper tape in place, the calculated distance from the edge of the fabric. The bottom end of the zipper will extend past the marked end of the slit. Place the presser foot on the zipper so that the coil is in the notch to the right of the needle (1). Stitch zipper in place, from the top to the marked end of the slit. Close zipper.

Place the other zipper tape face down on the opposite slit edge and pin in place at the top. Open zipper again. Place the presser foot on the top end of the zipper so that the coil is in the notch to the left of the needle (2). Sew the zipper in place, from the top to the end of the slit. Close zipper.

Now stitch the seam below the zipper, from bottom to top. Turn the loose lower end of the zipper out of the way, over the seam allowance. Stitch as close as possible to the last stitches of the zipper seams. Trim away excess zipper and bind the end with a scrap of fabric.