

118 Coat

Burda sizes 36, 38, 40, 42, 44

Back length approx. 115 cm (45 1/4 ins)

Materials

Note: The piping for this style is made of nappa leather. We used a leather skin, approx. 125 cm (50 ins) long, so that the long piping strips for the front edges and section seams can each be cut in one piece. If your leather is shorter, cut the piping strips in sections and join them to the required length. You may also use purchased piping. In this case you will need 12.40 – 12.50 – 12.60 – 12.80 – 12.90 m (13 5/8 – 13 3/4 – 13 7/8 – 14 – 14 1/8 yds).

Wool worsted,
width: 155 cm (61 ins)
length: 3.40 – 3.40 – 3.45 – 3.45 – 3.45 m
(3 3/4 – 3 3/4 – 3 7/8 – 3 7/8 – 3 7/8 yds).

Nappa leather for the piping. For this style, you will need one leather skin with approx. 10 sq. ft. Thin cord for the piping.

Lining,
width: 140 cm (55 ins)
length: 2.00 – 2.00 – 2.40 – 2.40 – 2.40 m
(2 1/4 – 2 1/4 – 2 5/8 – 2 5/8 – 2 5/8 yds).

Interfacing.

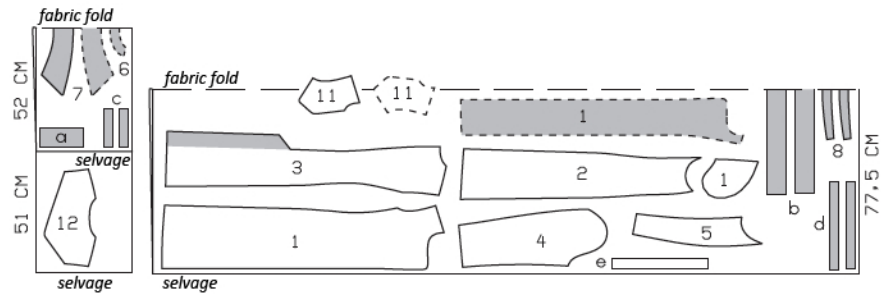
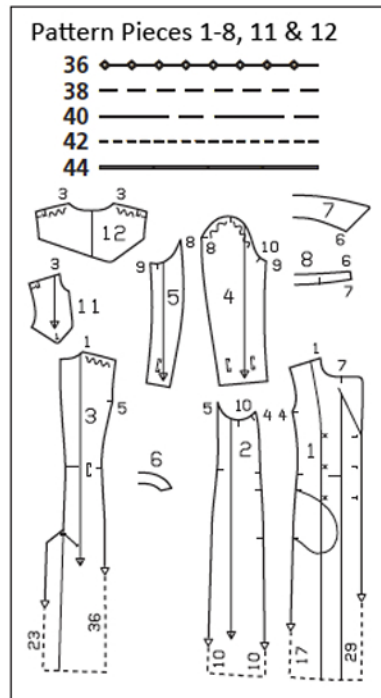
Vilene Bias Tape/stay tape.

6 large buttons, 6 smaller buttons, 1 flat inside button, and thin shoulder pads.

Recommended fabrics: Coat fabrics of wool or blends.

Preparations

Print the pattern out on letter or A4 sized paper. It is very important to not scale or fit any of the pages, you must print the document in actual size. Your pattern will print on multiple pages, which you will then tile together. Arrange the sheets on a large, hard and flat surface matching up the numbers and letters (i.e. 6A to 6A). Cut or fold one of the sides and match the edge to it's corresponding side. Then, tape down in place so paper is secure.



Fold the fabric as shown in the pattern layout. Right side faces in on a double layer of fabric; right side faces up on a single layer of fabric. Lay the asymmetric back yoke piece on the right side of the fabric, with its printed side facing up. The front yoke pieces shown extending over the fabric fold should be cut last from a single layer of fabric. Cut right and left pieces as opposites.

Trace the pattern pieces from the pattern sheet following the lines and markings for the correct size and the correct style (118). This pattern also includes pattern pieces, lines and markings for style 117 & 119 that should be ignored.

Trace the facing from piece 1 as a separate pattern piece. Trace the pocket piece from piece 1 as a separate pattern piece – it is the same for all sizes. The loop markings on pieces 11 and 12 are for size 36. For the other sizes, re-mark the loops according to the size lines.

burda style magazine patterns do not have seam allowance included.

Seam and hem allowance to be added:

Seams and edges 1.5 cm (5/8 in), hem and sleeve hems 4 cm (1 5/8 ins), lining 1.5 cm (5/8 in). Cut leather piping pieces without allowances.

Cutting Out

Wool worsted:

- 1 front 2x
- front facing 2x
- pocket piece 2x
- 2 side piece 2x
- 3 back 2x
- 4 upper sleeve 2x
- 5 under sleeve 2x
- 6 back facing, on a fold 1x
- 7 collar, on a fold 2x
- 8 collar stand, on a fold 2x
- 11 front yoke 2x
- 12 back yoke 1x

Draft the following pieces NOT included in the pattern:

- a) 2 welts, 18 cm (7 ins) long, 8 cm (3 1/4 ins) wide, finished width 4 cm (1 5/8 ins),
- b) tie belt, a total of 175 – 180 – 185 – 188 – 192 cm (69 – 71 – 72 3/4 – 74 – 75 3/4 ins) long, 8 cm (3 1/4 ins) wide, finished width 4 cm (1 5/8 ins),
- c) 4 tab pieces (shoulder), each 17 cm (6 3/4 ins) long, 3.5 cm (1 1/2 ins) wide,
- d) 4 tab pieces (sleeves), each 37 – 38 – 39 – 40 – 41 cm (14 1/2 – 15 – 15 1/2 – 15 3/4 – 16 1/4 ins) long, 3.5 cm (1 1/2 ins) wide,
- e) 10 loops, a total of 80 cm (31 1/2 ins) long, 4 cm (1 5/8 ins) wide (incl. allowances).

Nappa leather:

- pipng strips, 3 cm (1 1/4 ins) wide:
- front edges and lapels, cut 2, each 122 – 123 – 124 – 125 – 126 cm (48 – 48 1/2 – 49 – 49 1/4 – 49 3/4 ins) long,
- front section seams, cut 2, each 105 cm (41 1/2 ins) long,
- back section seams, cut 2, each 110 cm (43 1/2 ins) long,
- back sleeve seams, cut 2, each 65 cm (25 3/4 ins) long,
- front yoke, cut 2, each 36 – 38 – 39 – 41 – 43 cm (14 1/4 – 15 – 15 1/2 – 16 1/4 – 17 ins) long,
- back yoke, cut 1, 46 – 47 – 48 – 49 – 51 cm (18 1/8 – 18 1/2 – 19 – 19 1/4 – 20 1/4 ins) long,



- sleeve tabs, cut 2, each 81 – 83 – 85 – 87 – 89 cm (32 – 32 3/4 – 33 1/2 – 34 1/4 – 35 ins) long,
- shoulder tabs, cut 2, each 40 cm (15 3/4 ins) long,
- collar, cut 1, 85 – 86 – 87 – 88 – 89 cm (33 1/2 – 34 – 34 1/4 – 34 3/4 – 35 ins) long.

Lining: piece 1 minus width of facing; piece 3 minus neck facing and with an ease pleat of approx. 2 cm (3/4 in) at centre back; pieces 2, 4, 5, 11 and 12; and also pocket piece (piece 1).

Interfacing: See shaded area on pattern layout. Also interface hem allowances. Iron Vilene Bias Tape/stay tape to wrong side of neck and armhole edges and to wrong side of front shoulder edges.

Sewing

Piping: Fold each leather piping strip in half lengthwise, wrong side facing in. Lay cord between layers, along the fold. Use the zipper foot of your sewing machine to topstitch close to piping cord.

Pin piping to section seam edges and front pocket opening edges so that cord of piping lies on garment piece, next to seam line. Baste piping in place, with long stitches, close to seam line.

Fold each welt lengthwise, right side facing in. Stitch across ends. Turn welts right side out. Stitch welts to front pocket open edges, between seam marks.

Stitch side pieces to fronts, not stitching across pocket openings.

Pin pocket lining pieces right sides together with seam allowances of fronts and stitch in place close to welt attachment seams. Pin pocket pieces of coat fabric right sides together with seam allowance of side pieces and stitch to pocket opening edges, directly along marked seams line. Press pocket/lining pieces forward and stitch together. Sew ends of welts in place by hand.

Sewing Continued...

Stitch centre back seam, leaving vent open at bottom. Press allowances of centre seam open. Press left vent facing to inside. Turn right vent underlap toward left back and press seam allowance of right back to inside above vent, tapering as you go to avoid needing to clip the allowance.

Stitch side pieces to back, catching piping. Press seam allowances onto back – piping points toward side. Stitch shoulder seams on coat and on facing.

Stitch shoulder seams of yokes and of yoke lining. Lay yoke units of main fabric and lining right sides together. Stitch along front and lower edges, catching piping. Trim seam allowances. Turn yoke right side out and press edges. Work buttonhole (small button) in each front yoke piece, as marked. Lay yoke on coat, matching shoulder seams. Baste yoke to neck and armhole edges.

Notched collar: Stitch collar stand pieces to collar pieces. Trim seam allowances and press open. Stitch collar stand of under collar to neck edge of coat, beginning and ending exactly at seam on lapel. Press seam allowances of collar stand attachment seam open. Baste piping to lapel edges (beginning at collar stand attachment seam) and to front edges, down to marked hem line – piping cord lies on garment piece, next to seam line. Along curves, clip tape of piping several times. Turn both ends of piping under, toward seam allowance. Baste piping to front collar stand edges and outer edges of under collar, turning ends of piping under. Stitch collar stand of upper collar to facing, from seam mark. Press seam allowances open. Lay facing right sides together with coat and pin to front edges. Pin lapel fold lines together. Roll lapels and pin outer edges together. Lay upper collar on under collar, laying collar stand pieces together. Pin collar attachment seams together. Roll collar and pin outer edges together. Stitch facing to front edges and lapel edges, up to seam marks, not catching allowances of collar stand. Then stitch along edges of collar stand and collar, not catching allowances of lapels. Trim seam allowances.

Turn facing to inside and turn collar and collar stand right side out. Press edges. Pin collar stand attachment seams together. On back, turn facing up again and sew seam allowances together, close to collar stand attachment seams. Turn facing down.

At hem edge, turn front facings and back vent facing back. Press hem allowance to inside then turn down again. Turn facings to inside.

Fold strip for loops lengthwise, right side facing in, and stitch 1 cm (3/8 in) from fold edge. Turn right side out. Cut into 10 loop pieces. Turn in loop ends – finished length 6 cm (2 3/8 ins). Stitch loops to back, over shoulder seams, and to sleeve pieces, as marked.

Shoulder tabs: On two tab pieces, trim one end to a point. Stitch piping to long edges and pointed end. Turn seam allowances to wrong side – piping lies along edges. Turn straight tab ends under. Lay each of these tab pieces on one remaining tab piece, wrong sides facing. Work from upper side to stitch next to piping cord, catching tab pieces which lie below. On lower side, trim tab pieces close to stitching. Stitch across straight ends of tabs. Work a buttonhole (small button) in pointed end of each tab. Lay shoulder tabs face down on shoulder seams so that straight ends lie under loops and pointed ends point to the side. Stitch straight tab ends in place.

Stitch back sleeve seams, catching piping. Press seam allowances onto upper sleeves – piping points toward back. Stitch lower sleeve seams. Press sleeve hem allowances to inside and sew in place by hand.

Set in sleeves, easing sleeve caps and not catching shoulder tabs. Sew shoulder pads in place. Lay pointed ends of shoulder tabs toward neck edge. Each tab should extend 1.5 cm (5/8 in) past sleeve attachment. Sew buttons to shoulder seams to match buttonholes in tabs.

Sew lining: On back lining pieces, stitch allowances of centre seam together, 1 cm (3/8 in) from edge. For the ease pleat, stitch along centre back at upper and lower edges, each approx. 5 cm (2 ins) long, and baste in between. Press pleat to one side. Stitch seams of lining. Set in sleeve linings.

Line coat, hem: Stitch lining to inside facing edges, turning hem allowance of facings down to do so. Lay lining inside coat with wrong sides together, pulling linings into sleeves. At back vent, pin lining seam to centre seam. At vent, turn back lining which lies on top. Turn under edge of lining which lies below and pin to vent underlap edge of right back. Reach up between lower edges of main fabric and lining to pull out underlap and lining. Pin edges together, up to approx. 10 cm (4 ins) above hem line, right sides facing. Turn hem allowance of coat to outside and stitch to lower lining edge, approx. 10 cm (4 ins) long, beginning at long edge of underlap. Pin hem allowance and lining to long edge of underlap, turning extra length of lining down like a small fold and pinning it in place under hem allowance. Stitch underlap edges together. Push underlap in place again. Lay the turned-back lining over the vent, trim to 1 cm (3/8 in) before underlap edge, trim at an angle 1 cm (3/8 in) below end of vent, and clip diagonally into corner, approx. 1 cm (3/8 in) long.

Sewing Continued...

Turn in lining edge and pin to vent underlap of left back. Reach between main fabric and lining, pull out facing and lining, and stitch edges together. Push facing in place again. At upper end of vent, turn lining edge under and sew to underlap. Turn hem allowance of coat to inside and sew in place by hand. Turn in lining along hem edge, press fold edge lightly, push upward in a shallow curve, and pin to hem allowance. Sew facings and lining in place. Lay extra length of lining down and press lightly. Turn edges of sleeve linings under and sew to hem allowances. Lay extra length down and press.

Pin back vent closed. Topstitch left back at top end of vent, at an angle as marked, catching underlap.

Work buttonholes in right front as marked. Work top buttonhole in left front, for inside button. Lay coat closed, matching centre fronts. Sew buttons in place, to match buttonholes and as marked. Sew flat inside button to inside, on right front facing.

Sew sleeve tabs as for shoulder tabs. Pull tabs through sleeve loops. Overlap tab ends so that tabs lie flat on the sleeves. Sew buttons in place, to match buttonholes.

Fold tie belt lengthwise, right side facing in. Trim ends at an angle. Stitch edges together, leaving a section of seam open, for turning. Turn belt right side out. Sew seam opening closed.