

### 120 Top

Burda sizes 36, 38, 40, 42, 44

Back length approx. 58 cm (23 ins)

### Materials

Stretch satin, with widthwise stretch,  
width: 150 cm (59 ins)  
length: 1.45 – 1.45 – 1.45 – 1.50 – 1.50 m (1 3/4 yds).

Stretch lining, for front and back  
width: 140 cm (55 ins)  
length: 0.50 – 0.50 – 0.50 – 0.55 – 0.55 m  
(5/8 – 5/8 – 5/8 – 3/4 – 3/4 yd).

Vilene Bias Tape/stay tape.

1 invisible zip, 60 cm (24 ins) long.

Recommended fabrics: Fabrics with some body, with or without elastane.

### Preparations

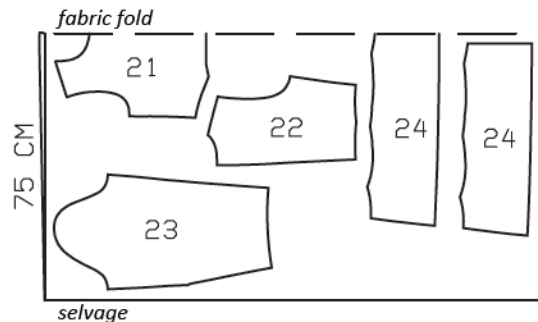
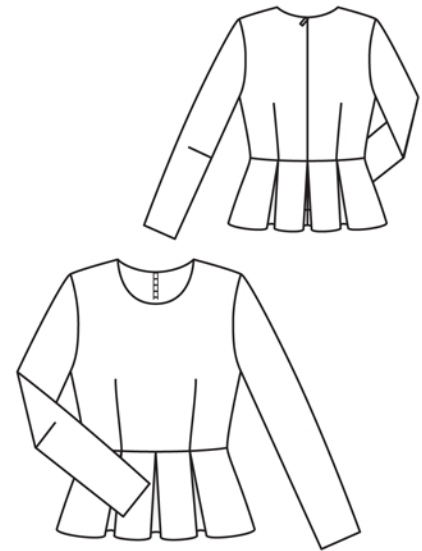
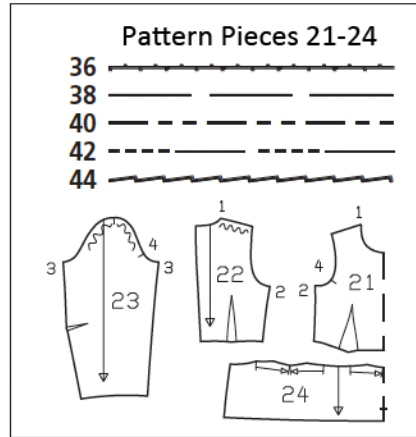
Print the pattern out on letter or A4 sized paper. It is **very important** to not scale or fit any of the pages, you must print the document in **actual size**. Your pattern will print on multiple pages, which you will then tile together. Arrange the sheets on a large, hard and flat surface matching up the numbers and letters (i.e. 6A to 6A). Cut or fold one of the sides and match the edge to it's corresponding side. Then, tape down in place so paper is secure.

Trace the pattern pieces from the pattern sheet following the lines and markings for the correct size and the correct style (120). This pattern also includes pattern pieces, lines and markings for style 121 & 122 that should be ignored.

The pleat arrows on piece 24 are marked for size 36. For the other sizes, mark pleat arrows accordingly.

**burda style magazine patterns do not have seam allowance included.**

Seam and hem allowance to be added:  
Seams and edges 1.5 cm (5/8 in), hem and sleeve hems 4 cm (15/8 ins) (flare sleeve hem allowance). Cut lining pieces with 1.5 cm (5/8 in) wide seam allowances.



Cut from a double layer of fabric, right side facing in.

### Cutting Out

Satin:

- 21 front, on a fold 1x
- 22 back 2x
- 23 sleeve 2x
- 24 front peplum, on a fold 1x
- 24 back peplum 2x

Lining: pieces 21 and 22.

Vilene Bias Tape/stay tape: Iron to wrong side of neck edge.

## Sewing

Stitch front darts. Trim dart allowances to 1 cm (3/8 in) wide and press toward centre. Stitch back darts and press toward centre.

Stitch side seams and shoulder seams. Press seam allowances open.

Stitch side seams on peplum pieces. Press hem allowance to inside and sew in place by hand. Fold pleats in direction of arrows and baste to upper edge. Stitch peplum to front and back pieces. Press seam allowances up.

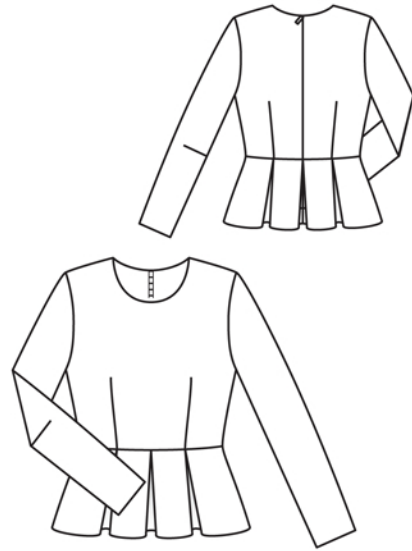
Sew invisible zip to back slit edges, see the "Helpful Hint" on next page. Stitch centre back seam from lower edge to zip.

Stitch darts and seams of lining.

Neck edge: Pin lining right sides together with neck edge of blouse. At zip slit, turn lining back, approx. 5 mm (3/16 in) before slit edge, and pin to neck edge. At blouse slit edges, turn allowances to outside and pin to neck edge, over lining. Stitch along neck edge. Trim seam allowances. Turn allowances of slit edges to inside. Turn lining up and stitch to seam allowances, as far as possible, close to seam. Turn lining to inside. Baste lining to armhole edges. Turn lining edges under and sew to zip tapes and to horizontal seam.

Stitch darts in sleeves. Press darts up. Stitch sleeve seams. Press sleeve hem allowances to inside and sew in place by hand.

Set in sleeves, easing sleeve caps.





These special zippers come in various lengths. The zipper should be at least 2 cm (3/4 in) longer than the slit. It is sewn in place before the seam below the slit is stitched. A special presser foot is required to sew the zipper in place.

### **Sewing the zipper in place:**

Open the zipper and push the coil back with your thumbnail to reveal the seam marking between the tape and the coil. Place the open zipper right side down on the right fabric side of one slit edge.

In order to stitch the zipper in place exactly along the marked seam line, you must first calculate the distance between the tape edge and the fabric edge as follows: width of seam allowance minus 1 cm (3/8 in) tape width = distance from edge of fabric. This will yield a value of 5 mm (3/16 in) if the width of the seam allowance is 1.5 cm (5/8 in).

Pin the top end of the zipper tape in place, the calculated distance from the edge of the fabric. The bottom end of the zipper will extend past the marked end of the slit. Place the presser foot on the zipper so that the coil is in the notch to the right of the needle (1). Stitch zipper in place, from the top to the marked end of the slit. Close zipper.

Place the other zipper tape face down on the opposite slit edge and pin in place at the top. Open zipper again. Place the presser foot on the top end of the zipper so that the coil is in the notch to the left of the needle (2). Sew the zipper in place, from the top to the end of the slit. Close zipper.

Now stitch the seam below the zipper, from bottom to top. Turn the loose lower end of the zipper out of the way, over the seam allowance. Stitch as close as possible to the last stitches of the zipper seams. Trim away excess zipper and bind the end with a scrap of fabric.