

### 117 Jacket

Burda sizes 36, 38, 40, 42, 44

Back length approx. 48 cm (19 ins)

### Materials

Wool worsted,  
width: 155 cm (61 ins)  
length: 1.90 – 1.95 – 1.95 – 2.00 – 2.00 m  
(2 1/8 – 2 1/4 – 2 1/4 – 2 1/4 – 2 1/4 yds).

Lining,  
width: 140 cm (55 ins)  
length: 1.20 – 1.20 – 1.20 – 1.25 – 1.25 m  
(1 3/8 – 1 3/8 – 1 3/8 – 1 1/2 – 1 1/2 yds).

Interfacing.

Vilene Bias Tape/stay tape.

4 buttons and 2 flat inside buttons.

1 buckle without prong, bar width 5.5 cm (2 1/4 ins).

Buttonhole thread for decorative stitching.

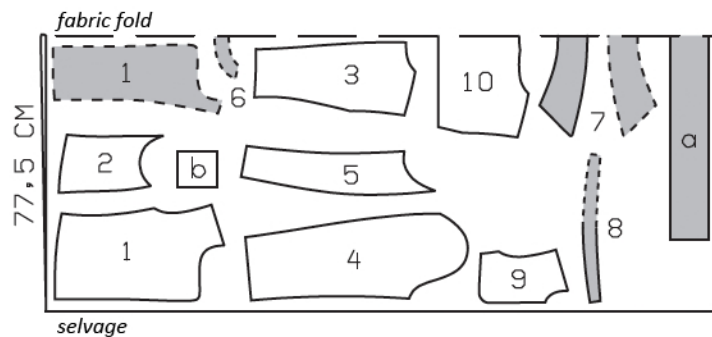
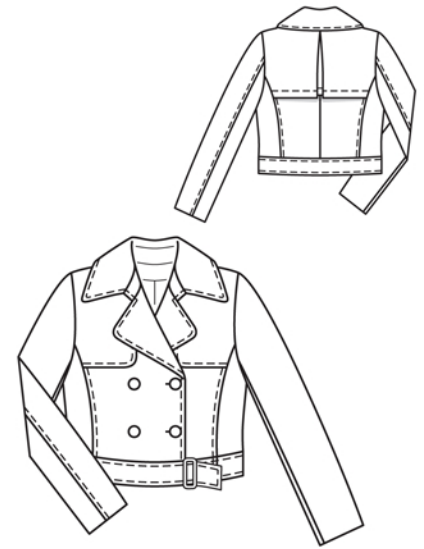
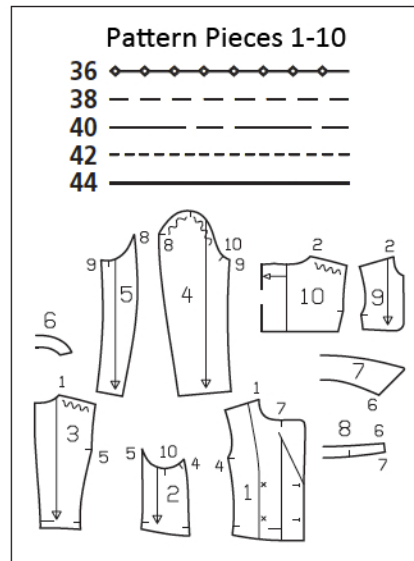
Recommended fabrics: Jacket fabrics of wool or blends.

### Preparations

Print the pattern out on letter or A4 sized paper. It is very important to not scale or fit any of the pages, you must print the document in actual size. Your pattern will print on multiple pages, which you will then tile together. Arrange the sheets on a large, hard and flat surface matching up the numbers and letters (i.e. 6A to 6A). Cut or fold one of the sides and match the edge to it's corresponding side. Then, tape down in place so paper is secure.

Trace the pattern pieces from the pattern sheet following the lines and markings for the correct size and the correct style (117). This pattern also includes pattern pieces, lines and markings for style 118 & 119 that should be ignored.

Trace the facing from piece 1 as a separate pattern piece.



Cut from a double layer of fabric, right side facing in.

### Cutting Out

Wool worsted:

- 1 front 2x
- front facing 2x
- 2 side piece 2x
- 3 back 2x
- 4 upper sleeve 2x
- 5 under sleeve 2x
- 6 back facing, on a fold 1x
- 7 collar, on a fold 2x
- 8 collar stand, on a fold 2x
- 9 front yoke 2x
- 10 back yoke, on a fold 1x
- a) waistband with 10 cm (4 in) overlap, 116 – 120 – 124.5 – 129 – 133.5 cm (45 3/4 – 47 1/4 – 49 1/8 – 50 3/4 – 52 5/8 ins) long, 11 cm (4 3/8 ins) wide, finished width 5.5 cm (2 1/4 ins),

b) loop, 10 cm (4 ins) long, 11 cm (4 3/8 ins) wide, finished width 5.5 cm (2 1/4 ins).

Lining: piece 1 minus width of facing, piece 3 minus width of facing and with an ease pleat of approx. 2 cm (3/4 in) at centre back, pieces 2, 4, 5 and 9.

Interfacing: See shaded area on pattern layout. Also interface hem allowances of sleeves. Iron Vilene Bias Tape/stay tape to wrong sides of neck and armhole edges and to wrong side of front shoulder seam edges.

**burda style magazine patterns do not have seam allowance included.**

Seam and hem allowance to be added:

Seams and edges 1.5 cm (5/8 in), lower edge of back yoke 3 cm (1 1/4 ins), sleeve hems 4 cm (1 5/8 ins), lining 1.5 cm (5/8 in)

## Sewing

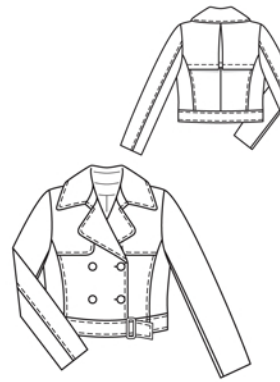
**Decorative hand stitching:** Use buttonhole thread or a double strand of sewing thread to hand-sew running stitches, 5 mm (3/16 in) long and spaced 5 mm (3/16 in) apart.

Stitch centre back seam. Stitch shoulder seams on jacket and facing. Press seam allowances open.

On back yoke, press allowance on lower edge to inside and baste. Hand-sew running stitches 2 cm (3/4 in) from lower edge. Fold pleats in direction of arrows, press, and baste to upper edge. Lay front yoke pieces of main fabric and lining together, right sides facing. Stitch together along front and lower edges. Trim seam allowances. Turn yokes right side out and press edges. Baste open yoke edges together. Sew running stitches 1 cm (3/8 in) from seamed edges. Stitch shoulder seams of yoke. Lay yoke on jacket, matching shoulder seams. Baste yoke to neck edge, armhole edges, and section seam edges.

Stitch side pieces to fronts and to back. Press seam allowances onto fronts and back. Sew running stitches 1 cm (3/8 in) from seams, not catching yokes.

**Notched collar:** Pin facing right sides together with jacket, building a little extra fullness in corners of lapels. Stitch facing to jacket along front edges and edges of lapels, as far as marking. Leave facing lying right sides together with jacket for the time being. Stitch collar stand pieces to collar pieces. Trim seam allowances and press open. Pin collar and collar stand units right sides together, building a little extra fullness into upper collar. Stitch front collar stand edges together then stitch collar edges together, beginning and ending exactly at seam line on attachment edge. Turn collar and collar stand right side out and press. Lay collar between jacket and facing. Stitch outer collar stand piece to neck edge of jacket and stitch inside collar stand piece to facing. Press seam allowances open. Turn facing to inside. Pin collar stand attachment seams together. On back, turn facing up again and stitch seam al-



lowances together, close to collar stand attachment seam. Turn facing down.

Stitch back sleeve seams (seam number 8). Press seam allowances onto upper sleeves. Sew running stitches 1 cm (3/8 in) from seams. Stitch lower sleeve seams. Press sleeve hem allowances to inside and sew in place by hand. Set in sleeves, easing sleeve caps.

On back lining pieces, stitch allowances of centre seam together, 1 cm (3/8 in) from edge. For the ease pleat, stitch along centre back at upper and lower edges, each approx. 5 cm (2 ins) long, and baste in between. Press pleat to one side. Stitch seams of lining. Set in sleeve linings.

Stitch lining right sides together with inside facing edge. Lay lining in jacket, with wrong sides facing, pulling linings into sleeves. Above each sleeve hem, pin a fold, approx. 1 cm (3/8 in) deep, in lining. Turn in sleeve lining and sew to hem allowance. Remove pins from folds and press extra length of lining down. Baste facings and lining to lower jacket edge. Sew running stitches along front edges and edges of lapels and collar.

Stitch waistband to lower jacket edge, leaving overlap extending on the right. Press allowances of attachment seam and of other long waistband edge onto waistband. Fold waistband lengthwise and stitch across left waistband end. On the right, at overlap, turn seam allowances up again. Stitch along upper overlap edge and across right waistband end. Turn waistband right side out. Sew inside waistband edge in place by hand. Sew running stitches around edges of waistband.

Fold loop piece to half its width, right side facing in. Stitch along long edge and across one end. Trim seam allowances, trimming diagonally across corner. Turn loop right side out. Sew running stitches along long edges. Stitch open loop end to waistband, below left front section seam – loop points toward side. Trim seam allowances to 7 mm (1/4 in) wide. Turn loop forward. Sew running stitches 1 cm (3/8 in) from attachment seam. Fold seamed loop end over bar of buckle, 3 cm (1 1/4 ins) wide, and sew in place.

Work buttonholes on right front. Work top buttonhole in left front and one buttonhole in left waistband end, for inside buttons. Lay jacket closed, matching centre fronts. Sew buttons in place, to match buttonholes and as marked. Sew flat inside buttons to inside of right front facing and right end of waistband.