

110 Waistcoat

Burda sizes 36, 38, 40, 42, 44

Back length approx. 70 cm (28 ins)

Materials

Wool fabric,
width: 140 cm (55 ins)
length: 1.55 – 1.60 – 1.60 – 1.65 – 1.65 m
(1 3/4 – 1 3/4 – 1 3/4 – 1 7/8 – 1 7/8 yds).

Lining,
width: 140 cm (55 ins)
length: 0.90 m (1 yd) for all sizes.

Vilene Bias Tape/stay tape.

2 large sew-on snap fasteners.

Recommended fabrics: Wools or blends.

Preparations

Print the pattern out on letter or A4 sized paper. It is **very important** to not scale or fit any of the pages, you must print the document in **actual size**. Your pattern will print on multiple pages, which you will then tile together. Arrange the sheets on a large, hard and flat surface matching up the numbers and letters (i.e. 6A to 6A). Cut or fold one of the sides and match the edge to it's corresponding side. Then, tape down in place so paper is secure.

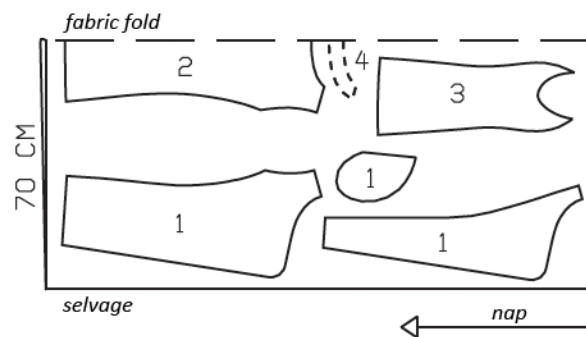
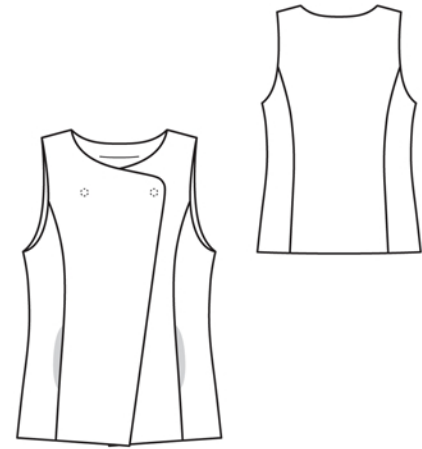
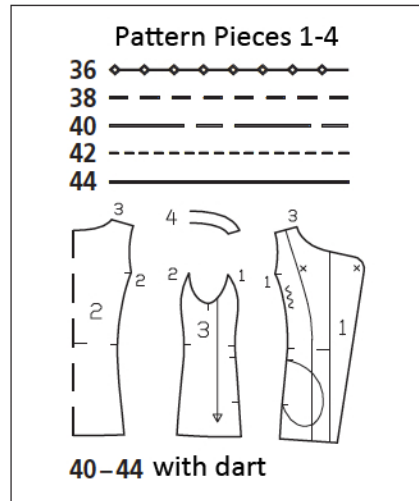
Trace the pattern pieces from the pattern sheet following the lines and markings for the correct size and the correct style (110). This pattern also includes pattern pieces, lines and markings for style 111, 112 & 113 that should be ignored.

Trace the front facing from piece 1 as a separate pattern piece. Trace the pocket piece from piece 1 as a separate pattern piece – it is the same for all sizes. The snap fasteners marked on piece 1 apply for size 36. For the other sizes, move markings up, the same distance from neck edge as for size 36.

burda style magazine patterns do not have seam allowance included.

Seam and hem allowance to be added:

Seams and edges 1.5 cm (5/8 in), hem 4 cm (1 5/8 ins), lining 1.5 cm (5/8 in).



Cut from a double layer of fabric, right side facing in. Note direction of nap

Cutting Out

Wool fabric:

- 1 front 2x
- front facing 2x
- pocket piece 2x
- 2 back, on a fold 1x
- 3 side piece 2x
- 4 back facing, on a fold 1x

Lining: pieces 1 and 2 minus width of facing, piece 3, and also pocket piece.

Vilene Bias Tape/stay tape Iron to wrong side of neck and arm-hole edges.

Sewing

For sizes 40 – 44, stitch bust darts. Press darts down. For sizes 36 and 38, ease section seam edges of fronts from • to •.

Stitch side pieces to fronts, not stitching across pocket openings. Press seam allowances open.

Inseam pockets: Pin pocket pieces right sides together with seam allowances of pocket opening edges – pocket lining pieces in front and pocket pieces of main fabric in back. Stitch pocket pieces of main fabric in place, directly along marked seam line. Stitch pocket lining pieces to seam allowances, 7 mm (1/4 in) from seam lines. Press pocket pieces forward, trim even, and stitch together.

Stitch back section seams, shoulder seams, and facing seams. Press seam allowances open.

Stitch facing right sides together with front and neck edges. Trim seam allowances. Turn facing forward/up and stitch to seam allowances, close to attachment seam. Turn facing to inside. Press edges.

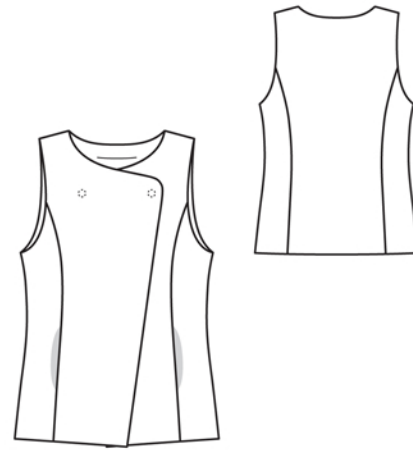
At hem edge, unfold facing. Press hem allowance to inside, then turn down again.

Stitch lining pieces together as for pieces of main fabric.

Stitch lining right sides together with inside facing edge. Press seam allowances onto lining. Lay lining inside waistcoat, with wrong sides facing.

Armholes: Turn under armhole edges of main fabric and of lining, individually, at the shoulder seam and hold together with a single straight pin. On front, reach between main fabric and lining to first pull one armhole edge out.

Remove the pin but keep hold of the edges. Stitch armhole edges together, from shoulder seam to seam mark on side piece, right sides facing. Trim seam allowances. Push edge in place again. Then pull armhole edge out from the back and stitch together. Push edge in place again. Stitch second armhole in same manner.



Turn hem allowance to inside and sew in place by hand. Turn facings to inside. Turn edge of lining under along lower edge of waistcoat, push upward, and pin to hem allowance. Sew facings and lining in place. Lay extra length of lining down.

Sew top halves of snap fasteners to wrong side of right front, taking even stitches and exiting needle on right fabric side. Sew bottom halves of snaps to left front to match.