

122 Blouse

Burda sizes 36, 38, 40, 42, 44

Back length approx. 65 cm (26 ins)

Materials

Cotton poplin,
width: 150 cm (59 ins)
length: 1.45 – 1.45 – 1.60 – 1.65 – 1.65 m
(1 3/4 – 1 3/4 – 1 3/4 – 1 7/8 – 1 7/8 yds).

Interfacing.

5 buttons.

Recommended fabrics: Blouse fabrics with some body.

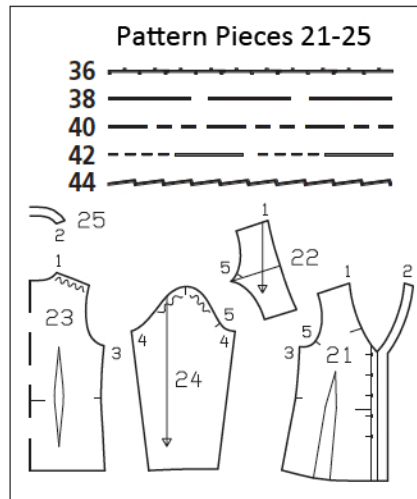
Preparations

Print the pattern out on letter or A4 sized paper. It is **very important** to not scale or fit any of the pages, you must print the document in **actual size**. Your pattern will print on multiple pages, which you will then tile together. Arrange the sheets on a large, hard and flat surface matching up the numbers and letters (i.e. 6A to 6A). Cut or fold one of the sides and match the edge to it's corresponding side. Then, tape down in place so paper is secure.

Trace the pattern pieces from the pattern sheet following the lines and markings for your size. The buttonholes marked on piece 21 apply for size 36. For sizes 38 – 44, mark the top buttonhole the same distance from neck edge as for size 36. The bottom buttonhole is the same for all sizes. Space the other buttonholes evenly in between.

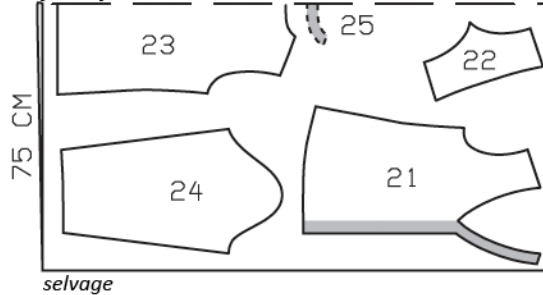
burda style magazine patterns do not have seam allowance included.

Seam and hem allowance to be added:
Seams and edges 1.5 cm (5/8 in), front yoke edge 2 cm (3/4 in), hem 4 cm (1 5/8 ins), sleeve hems 5 cm (2 ins) (flare sleeve hem allowance).



Sizes 36, 38

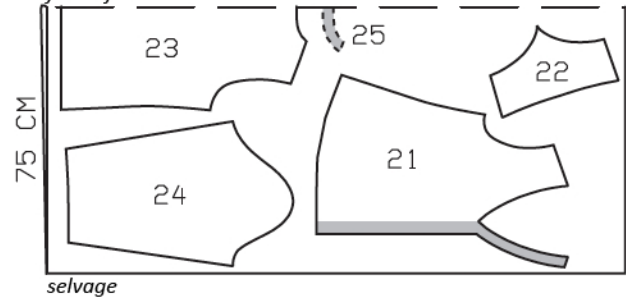
fabric fold



Cut from a double layer of fabric, right side facing in.

Sizes 40-44

fabric fold



Cutting Out

- 21 front 2x
- 22 front yoke 2x
- 23 back, on a fold 1x
- 24 sleeve 2x
- 25 back facing, on a fold 1x

Interfacing: See shaded area on pattern layout.

Sewing

Stitch front darts. Trim dart allowances to 1 cm (3/8 in) wide, neaten edges, and press allowances toward centre front. Stitch back darts and press toward centre back.

On front yoke edges, neaten edges of seam allowances and press allowances to inside. Fold yokes on fold line, with wrong side facing in – do not press fold edge. Lay yokes on fronts at placement lines and baste to armhole edges and shoulder seam edges. At neck edge, seam allowances of fronts extend.

Stitch side seams and shoulder seams. Press allowances onto back.

Turn hem allowance to inside, turn edge under, and stitch 3 cm (1 1/4 ins) from lower edge.

Turn front self-facings to outside and stitch to back facing. Stitch facing to neck edge, right sides together. Trim allowances. At neck edge, turn facing forward/up and stitch to allowances, as far as possible close to seam. Turn facing to inside. Press edges. Sew facing to hem allowance. Sew inside facing edge to shoulder seams.

Stitch sleeve seams. Turn sleeve hem allowances to inside, turn in to 4.2 cm (a scant 1 3/4 ins) wide, and baste. Topstitch 4 cm and 3.3 cm (1 5/8 ins and 1 3/8 ins) from lower sleeve edges.

Set in sleeves, easing sleeve caps.

Work buttonholes in right front.

