

101 Lamb Shearling Jacket

Sizes 36, 38, 40, 42, 44

Back length approx. 62 cm (24 1/2 ins)

Materials

Fake shearling (outer side leather, reverse side wool),

width: 140 cm (55 ins)

length: 1.60 – 1.65 – 1.65 – 1.75 – 1.75 m
(1 3/4 – 1 7/8 – 1 7/8 – 2 – 2 yds).

1 sew-on hook and bar fastener.

Recommended fabrics: Imitation leather with fur on reverse side.

Preparations

Print the pattern out on letter or A4 sized paper. It is **very** important to not scale or fit any of the pages, you must print the document in **actual size**. Your pattern will print on multiple pages, which you will then tile together. Arrange the sheets on a large, hard and flat surface matching up the numbers and letters (i.e. 6A to 6A). Cut or fold one of the sides and match the edge to it's corresponding side. Then, tape down in place so paper is secure.

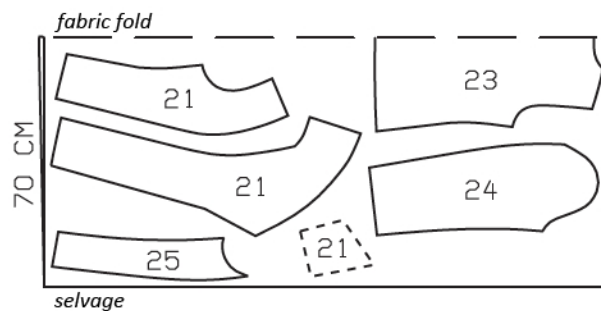
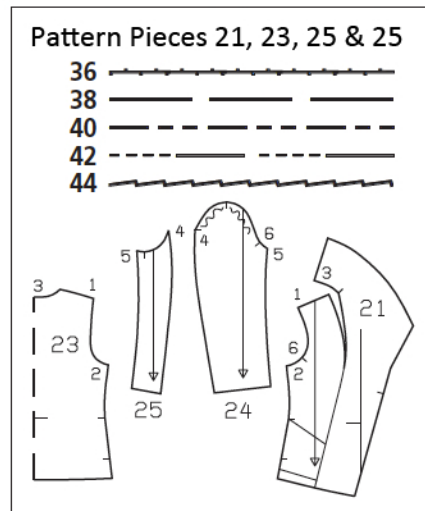
Trace the pattern pieces from the pattern sheet following the lines and markings for the correct size and the correct style (101). This pattern also includes pattern pieces, lines and markings for style 102 & 103 that should be ignored.

Trace the pocket piece from piece 21 as a separate pattern piece. Cut piece 21 apart on the marked seam line = centre front with collar and side front.

burda style magazine patterns do not have seam allowance included.

Seam and hem allowance to be added:

Seams 3 mm (1/8 in), armhole edges and sleeve cap 1 cm (3/8 in), upper and lower pocket piece edges 1 cm (3/8 in) (other edges 3 mm / 1/8 in), no allowances on hem edges, front edges or outer collar edges.



Cut from a double layer of fabric, fur side facing in.

Cutting Out

- 21 centre front with collar 2x
- 21 side front 2x
- pocket piece 2x
- 23 back, on a fold 1x
- 24 upper sleeve 2x
- 25 under sleeve 2x

Sewing

Open edge seams: Lay edge of one piece on the other piece, with fur sides of both facing down, overlapping edges 3 mm (1/8 in) wide. Edgestitch edges in place, pushing fur fibers toward outside.

Stitch shoulder seams (seam number 1). Stitch centre back seam on integrated collar sections of centre fronts. Stitch centre fronts to side front, as far as seam mark, then continue seam to stitch attachment edge of collar to back neck edge.

Lay pocket pieces on pocket opening edges of back – leather side facing fur side – and stitch in place, 3 mm (1/8 in) from edge. Leave pocket pieces lying on back for the time being.

Stitch side seams, not stitching across pocket openings.

Sewing Continued...

Lay pocket pieces under side fronts (fur sides facing). To stitch pocket pieces in place, pin paper pattern piece to side front and stitch along upper and lower edges of pattern piece. Stitch front pocket piece edges in place, along section seams.

Stitch sleeve seams. Set in sleeves, leather sides facing, easing sleeve caps. Turn lower sleeve edges up as you prefer.

Sew fastener hook to wrong side of right front (seam mark). Lay right front on left front, matching centre fronts. Sew bar of fastener to left front, to match hook.

