

129 Blouson Jacket

Sizes 17, 18, 19, 20, 21

Back length approx. 50 cm (20 ins)

Materials

Brushed wool,
width: 150 cm (59 ins)
length: 1.35 – 1.35 – 1.35 – 1.40 – 1.40 m (1 5/8 yds).

Fake fur, with lengthwise pattern,
width: 140 cm (55 ins)
length: 0.55 m (3/4 yd) for all sizes.

Lining,
width: 140 cm (55 ins)
length: 1.15 m (1 3/8 yds).

Interfacing.

Fusible batting Vilene/Pellon H 630.

1 separating metal zip, 50 cm (20 ins) long (must be shortened to 48 cm (19 ins) for size 17 and to 49 cm (19 1/4 ins) for size 18.

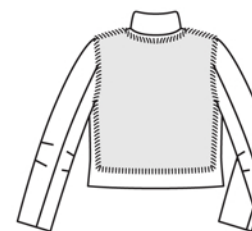
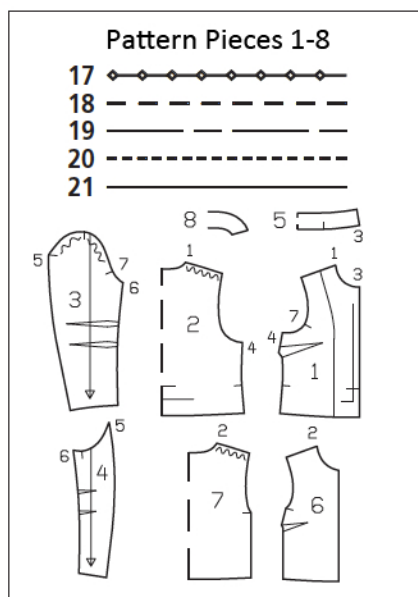
Recommended fabrics: Jacket fabrics with a brushed surface, combined with fake fur.

Preparations

Print the pattern out on letter or A4 sized paper. It is **very** important to not scale or fit any of the pages, you must print the document in **actual size**. Your pattern will print on multiple pages, which you will then tile together. Arrange the sheets on a large, hard and flat surface matching up the numbers and letters (i.e. 6A to 6A). Cut or fold one of the sides and match the edge to it's corresponding side. Then, tape down in place so paper is secure.

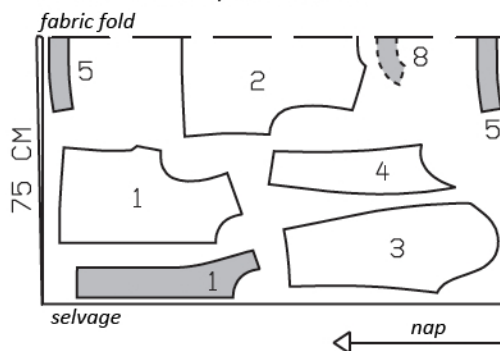
Trace the pattern pieces from the pattern sheet following the lines and markings for the correct size and the correct style (129). This pattern also includes pattern pieces, lines and markings for style 130 & 131 that should be ignored.

Trace the front facing from piece 1 as a separate pattern piece.

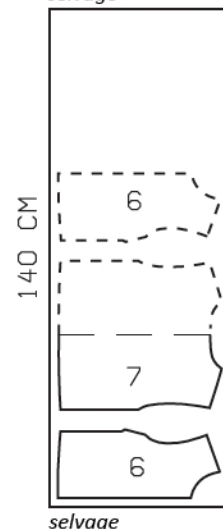


Fake Fur, 140cm wide

Brushed Wool, 150cm wide



selvage



Cut brushed wool from a double layer of fabric, right side facing in. Cut fake fur from a single layer of fabric, wrong side facing up. Note direction of nap.

Cutting Out

Brushed wool:

- 1 front 2x
- front facing 2x
- 2 back, on a fold 1x
- 3 upper sleeve 2x
- 4 under sleeve 2x
- 5 standing collar, on a fold 2x
- 8 back facing, on a fold 1x

Fake fur:

- 6 front 2x
 - 7 back, on a fold 1x
- When cutting out the fur, cut only the woven backing and not the hairs of the fur.
- Lining: Cut piece 1 minus width of facing; piece 2 minus width of facing and with an ease pleat of approx. 2 cm (3/4 in) at centre back; pieces 3 and 4.

burda style magazine patterns do not have seam allowance included.

Seam and hem allowance to be added:

Seams and edges 1.5 cm (5/8 in), hem and sleeve hems 4 cm (15/8 ins), lining 1.5 cm (5/8 in). Cut shoulder edges of fur pieces (pieces 6 and 7) with 1.5 cm (5/8 in) wide seam allowances. The remaining edges of the fur pieces have no seam allowances.

Sewing

Interfacing: See shaded area on pattern layout. Iron fusible batting to wrong side of collar.

Stitch bust darts. Cut each dart open along centre and trim allowances. Press darts open, pressing point flat.

Stitch side seams, shoulder seams, and facing seams. Press seam allowances open.

Stitch outer collar piece to neck edge. Press seam allowances open.

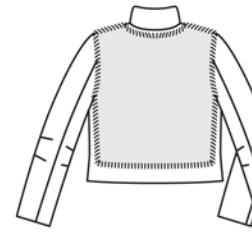
Stitch darts in upper sleeve and under sleeve pieces. Cut darts open along centre and press dart seams open, pressing points of darts flat. Stitch sleeve seams. Press sleeve hem allowances to inside and sew in place by hand.

Set in sleeves, easing sleeve caps.

Stitch bust darts in front pieces of fake fur. Cut darts open along centre and spread allowances open. Stitch shoulder seams on fur pieces, pushing fur fibres toward garment piece. Press seam allowances open. Lay fur piece on front and back pieces, at placement lines, matching shoulder seams. Pin fur edges in place and stitch in place with small zigzag stitches, turning fur fibres back onto fur piece.

Stitch inside collar piece to neck edge of facing. Press seam allowances open.

Front edges with zip, collar: Separate the zip. Pin halves of zip face up to front edges of front facings and inside collar piece (right fabric side) so that teeth of zip point toward side edge and edge of tape exactly meets marked seam line. Stitch along centre of each tape. Turn teeth of zip forward and press seam allowances onto facing and collar. Lay facing and inside collar piece right sides together with fronts and outer collar piece so that teeth of zip meet front edges – allowances of front edges extend. Pin upper collar edges together.



On outer collar piece, turn allowances of front edges to outside and pin to upper collar edge, over zip. Stitch along upper collar edge. Turn collar right side out and turn facing to inside. Press allowances on fronts and on front edges of outer collar to inside. Lay halves of zip with facing and inside collar under fronts and outer collar. Baste to seam allowances of front edges, not catching fronts. Stitch facings to front allowances, below zip. Pin collar attachment seams together exactly. At neck edge, turn facing up again and stitch seam allowances together, close to collar attachment seam, stitching as far as possible toward front.

At hem edge, unfold facings. Press hem allowance to inside, then turn down again.

Sew lining: On lining back, stitch ease pleat at top and bottom, each approx. 5 cm (2 ins) long, and baste in between. Press pleat to one side. Stitch darts and seams of lining. Set sleeves in lining.

Line coat, hem: Stitch lining right sides together with inside facing edge. Lay lining inside coat, with wrong sides together, pulling linings into sleeves. Turn hem allowance of coat to wrong side and sew in place. Turn in lining along hem edge. Press fold edge lightly, push upward in a shallow curve, and pin to hem allowance. Sew facings and lining in place. Lay extra length of lining down and press lightly. Above sleeve hems, pin a fold, approx. 1 cm (3/8 in) deep, in lining. Turn edges of sleeve linings under and and sew to hem allowances. Lay extra length down and press. Topstitch 1 cm (3/8 in) from front edges.