

140 Women's Costume Skirt

with sash, star necklace

Sizes 34, 36, 38, 40, 42, 44

Skirt length 48 cm (19 ins)

Materials

Skirt and sash:

Tulle,
width: 150 cm (59 in)
length: 11.00 – 11.00 – 11.00 – 12.10 – 12.10 – 12.10
(12 – 12 – 12 – 13 1/4 – 13 1/4 – 13 1/4 yds).

Star-print tulle,
width: 145 cm (57 in)
length: 2.90 – 2.90 – 2.90 – 3.10 – 3.10 – 3.10 m
(3 1/4 – 3 1/4 – 3 1/4 – 3 1/2 – 3 1/2 – 3 1/2 yds).

Lining,
width: 140 cm (55 in)
length: 0.70 m (7/8 yd).

Elastic, 2 cm (3/4 in) wide and 0.65 – 0.70 – 0.75 – 0.75 – 0.80 – 0.85 m (7/8 – 7/8 – 7/8 – 7/8 – 7/8 – 1 yd) long.

Star necklace and hair pins:

paper stars, 3 large (7.5 cm / 3 in), 2 medium (5 cm / 2 in), and 2 small (3.5 cm / 1 1/2 in) (Knorr Prandell).

Self-adhesive glitter foil, Aluminium wire, & Glue.

Taffeta ribbon, 1.5 cm (5/8 in) wide and 1.30 m (1 1/2 yds) long.

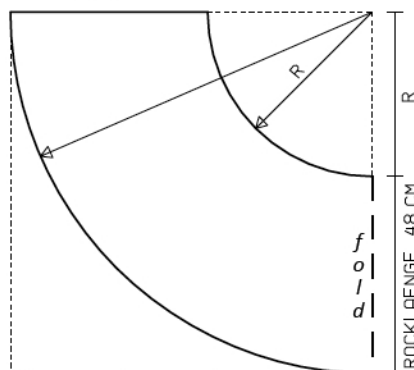
Hair clips.

Preparations

Follow the diagram to make a full-sized pattern piece for the skirt piece (a) (diagram to the right)

On a large sheet of wrapping paper – the upper edge and the right edges must form a right angle – stretch a thread from the upper right corner to mark the radius (R) for the waist edge. Also mark the hem line (radius plus skirt length). Or measure the length of the skirt down from the waist edge at several points and then connect the points in an even curve to mark the hem edge.

Skirt Diagram



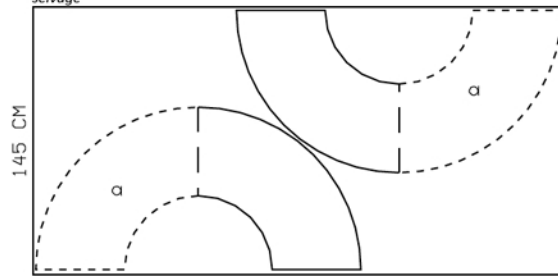
Radius
Sizes 34 – 38: 40 cm
Sizes 40 – 44: 43 cm

Add seam and hem allowances:
Seams 1 cm (3/8 in), no allowances at lower edges of tulle skirt pieces.

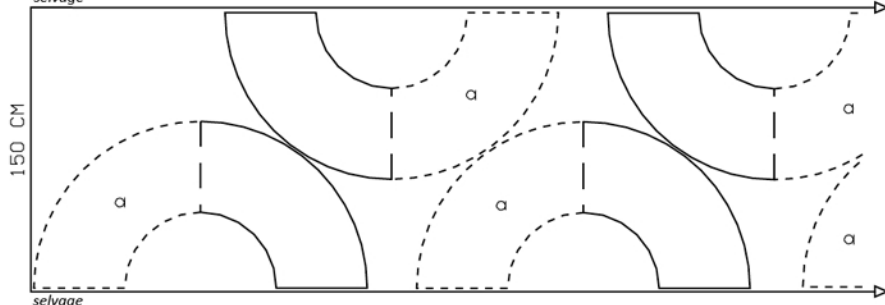


Right side faces in on a double layer of fabric; right side faces up on a single layer.

Star Tulle, 145cm wide
selvage



Tulle, 150cm wide
selvage



Cutting Out

Tulle:
a) skirt piece, on a fold 10x

Star-print tulle:
a) skirt piece, on a fold 2x

Lining: Draft the following pieces.
waistband, 90 – 90 – 90 – 110 – 110 – 110 cm (35 1/2 – 35 1/2 – 35 1/2 – 43 1/2 – 43 1/2 – 43 1/2 yds) long and 5 cm (2 ins) wide, finished width 2.5 cm (1 in),
sash, a total of 200 cm (80 ins) long, 28 cm (11 ins) wide, finished width 14 cm (5 1/2 ins).

Sewing

Skirt

Lay pairs of skirt pieces each right sides together. Stitch side seams. Lay skirt units together, with wrong side facing right side, star-print tulle panel lies underneath. Baste upper edges together and gather to match waistband.

Waistband: Pin ends of waistband right sides together. Stitch seam on outer half of waistband and leave inside half open to insert elastic. Press seam allowances open. Stitch outer half of waistband to upper edge of skirt. Press seam allowances onto waistband. Fold waistband in half to inside, turn raw edge under, and baste along joining seam. Working from the outer side, topstitch waistband close to joining seam, catching inside edge. Pull elastic into waistband. Sew ends of elastic together to a circumference of 62 – 66 – 70 – 74 – 78 – 82 cm (24 1/2 – 26 – 27 3/4 – 29 1/4 – 30 3/4 – 32 1/2 ins).

Sash

Fold sash piece lengthwise, right side in. Stitch edges together, leaving a section of seam open for turning. Turn band right side out press. Sew seam opening closed.

Star necklance and hair piece

Bend ends of a 35 cm (14 in) long piece of aluminium wire to form loops. Bend wire in a semi-circle. Glue glitter foil to the paper stars and cut to match. Glue paper side of glitter stars (2 large, 1 medium, 2 small) to wire. Use a hot glue gun for best results. Knot a 60 cm (24 ins) long piece of taffeta ribbon to each end loop.

Tie a small bow over one end. For the hair clips, attach a hair clip to each remaining large and medium star.

